



BRYANSTON COURT, GEORGE STREET, MARYLEBONE, W1H
£3,250,000 LEASEHOLD

AN EXQUISITE THREE DOUBLE SUITED BEDROOM LATERAL APARTMENT, WHICH HAS BEEN RECENTLY REFURBISHED TO AN EXACTING STANDARD AND SITUATED ON THE THIRD FLOOR (WITH LIFT) OF A PRIME MARYLEBONE PORTERED MANSION BLOCK.

Paddington | 020 7467 5770 | paddington@winkworth.co.uk

Winkworth

for every step...

winkworth.co.uk



DESCRIPTION: The dining and drinking options the area offers, are second-to-none. A fabulous variety of world-class restaurants and bars sit alongside local favourites. A short stroll south, takes you to the tranquil and picturesque Hyde Park, for horse-riding and boating on The Serpentine, or an energizing jog or yoga practice. The property is well served for transport links, including: Marble Arch, Bond Street and Edgware Road underground stations. For mainline Stations Paddington & Marylebone, together with access to the West and Heathrow via the A40.

LEASE: ABOUT 138 YEARS UNEXPIRED | SERVICE CHARGE: ABOUT £15,000 PER ANNUM | GROUND RENT: PEPPERCORN | COUNCIL TAX: H



Winkworth

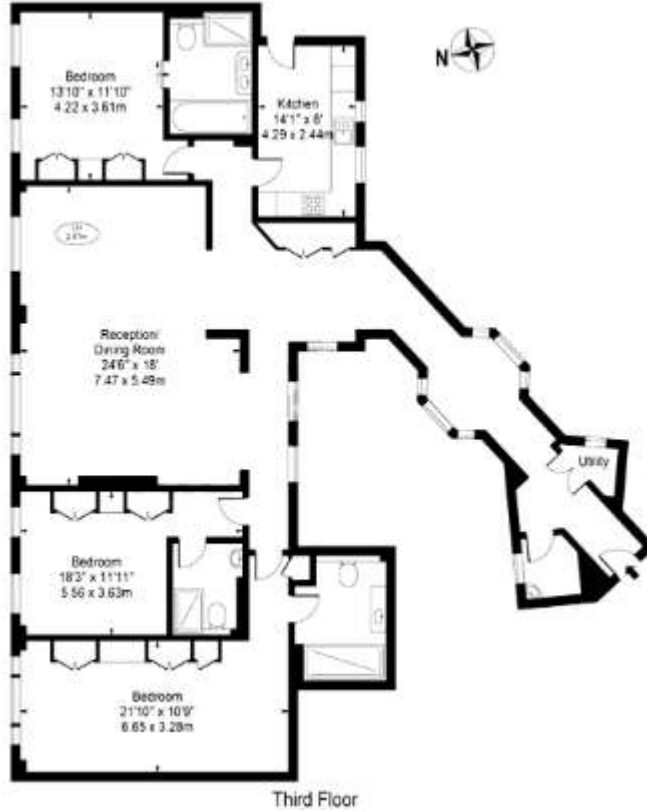
for every step...



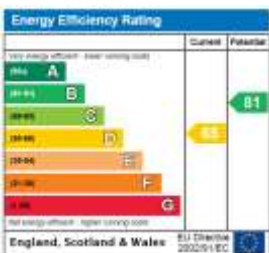
Winkworth

for every step...

Approx. Gross Internal Area 1777 Sq Ft - 165.09 Sq M



This floorplan is for illustration purposes only and is not to scale. The position and size of doors, windows, appliances and other features are approximate.



Paddington | 020 7467 5770 | paddington@winkworth.co.uk



for every step...

winkworth.co.uk

Winkworth wishes to inform prospective buyers and tenants that these particulars are a guide and act as information only. All our details are given in good faith and believed to be correct at the time of printing but they don't form part of an offer or contract. No Winkworth employee has authority to make or give any representation or warranty in relation to this property. All fixtures and fittings, whether fitted or not are deemed removable by the vendor unless stated otherwise and room sizes are measured between internal wall surfaces, including furnishings.