



HANBURY COURT, NORTHWICK PARK ROAD, HARROW, HA1  
£199,950 LEASEHOLD

## RETIREMENT FLAT FOR SALE

Tenure: Leasehold 92 Years Approx.

EPC Rating: C

Council Tax Band: E

Service Charge: £3,700.00 Per Annum

Ground Rent: £300.00 Per Annum

Harrow | 020 8861 3933 | harrow@winkworth.co.uk

**Winkworth**

for every step...

*winkworth.co.uk*



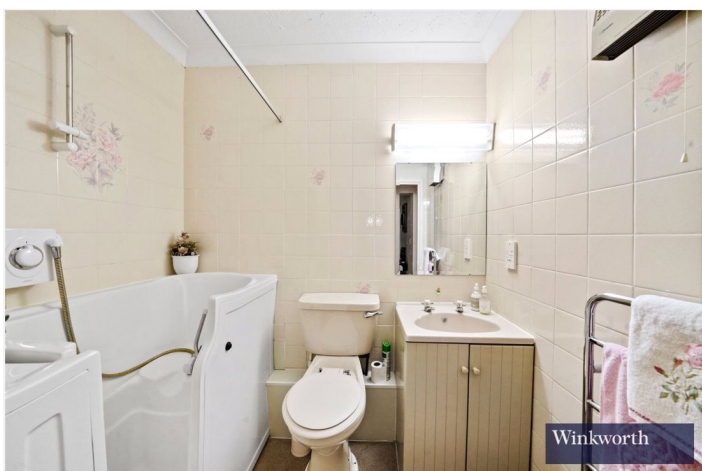
### DESCRIPTION:

Winkworth Harrow are delighted to announce the sole agency instruction on this well maintained two bedroom, First Floor RETIREMENT FLAT in the popular Hanbury Court Development, set in the midst of Central Harrow.

Hanbury Court boasts a large living space, two generous bedrooms, a fully fitted kitchen and a well-equipped bathroom.

Further benefits include, but are not limited to close proximity to both Northwick Park and Harrow-on-the-Hill underground Stations, well-kept gardens to the rear of the development, resident's parking and an onsite development manager. You can also take advantage of Central Harrow's shopping amenities with St Ann's and St George's Shopping Centres located a stone's throw away.

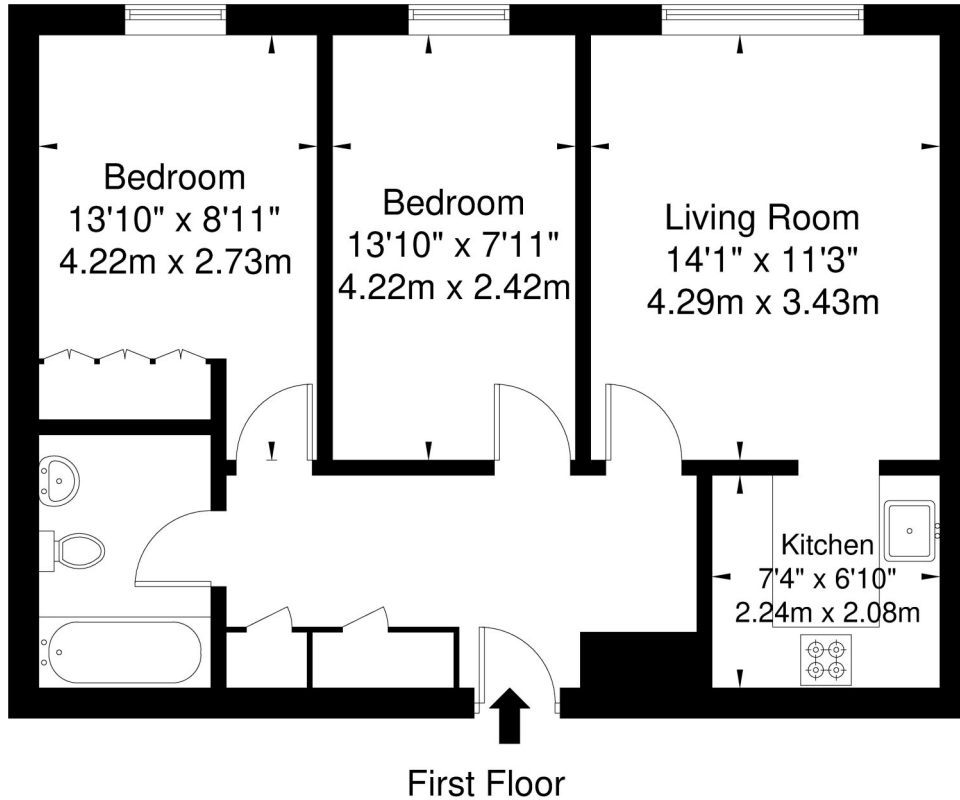
Book your viewing now!





# Hanbury Court, Northwick Park Road Harrow HA1 2LR

Approx. Gross Internal Area = 57.4 sq m / 617 sq ft



Ref

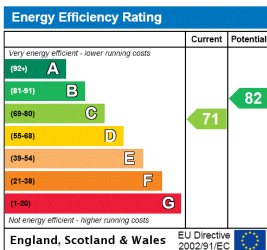
Copyright

**BLEU  
PLAN**

The Floor plan is not to scale and measurements and areas shown are approximate and therefore should be used for illustrative purposes only. The plan has been prepared in accordance with the RICS code of Measuring Practice and whilst we have confidence in the information produced it must not be relied on. If there is any aspect of particular importance, you should carry out or commission your own inspection of the property.

Copyright @ BLEUPLAN

This floorplan is for illustration purposes only and is not to scale. The position and size of doors, windows, appliances and other features are approximate.



**Winkworth**

Harrow | 020 8861 3933 | harrow@winkworth.co.uk

for every step...

winkworth.co.uk

Winkworth wishes to inform prospective buyers and tenants that these particulars are a guide and act as information only. All our details are given in good faith and believed to be correct at the time of printing but they don't form part of an offer or contract. No Winkworth employee has authority to make or give any representation or warranty in relation to this property. All fixtures and fittings, whether fitted or not are deemed removable by the vendor unless stated otherwise and room sizes are measured between internal wall surfaces, including furnishings.