



'Avondale' Dudsbury Crescent, Ferndown
BH22 8JF
GUIDE PRICE £779,950

Winkworth



GUIDE PRICE £ 779,950 FREEHOLD

'Avondale' is a modern and deceptively spacious three/four bedroom detached house, positioned in one of the areas most sought after locations, conveniently just 700 metres from high street amenities, yet tucked away on a highly sought after residential road.

This property would suit a range of buyers needs, from those downsizing, families and professionals to those looking for an easy to maintain second home close to the coast.

In addition to light and flowing internal accommodation there is a large gated driveway which can accommodate several vehicles and a very secluded rear garden with summer house.

Integral Garage
Detached House
Secluded Garden With Summer House
Premier Road Location
Three/Four Bedrooms
Immaculate Throughout
Jack & Jill Shower Room
Cloakroom With Utility Area
Kitchen/Diner
Close To Amenities

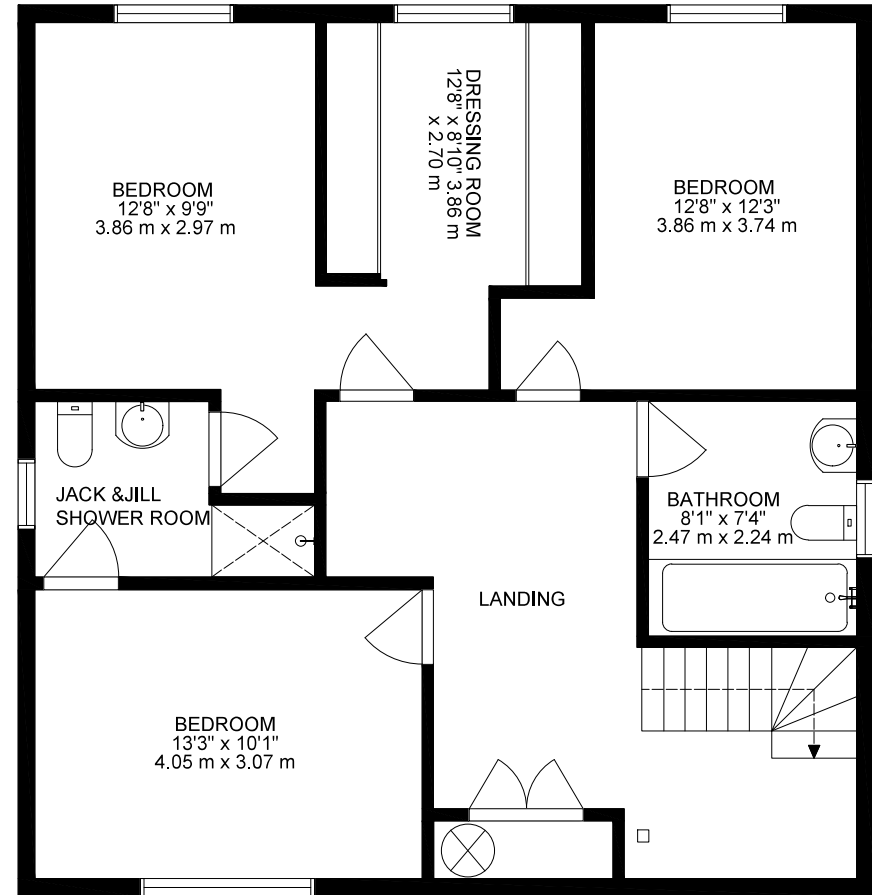
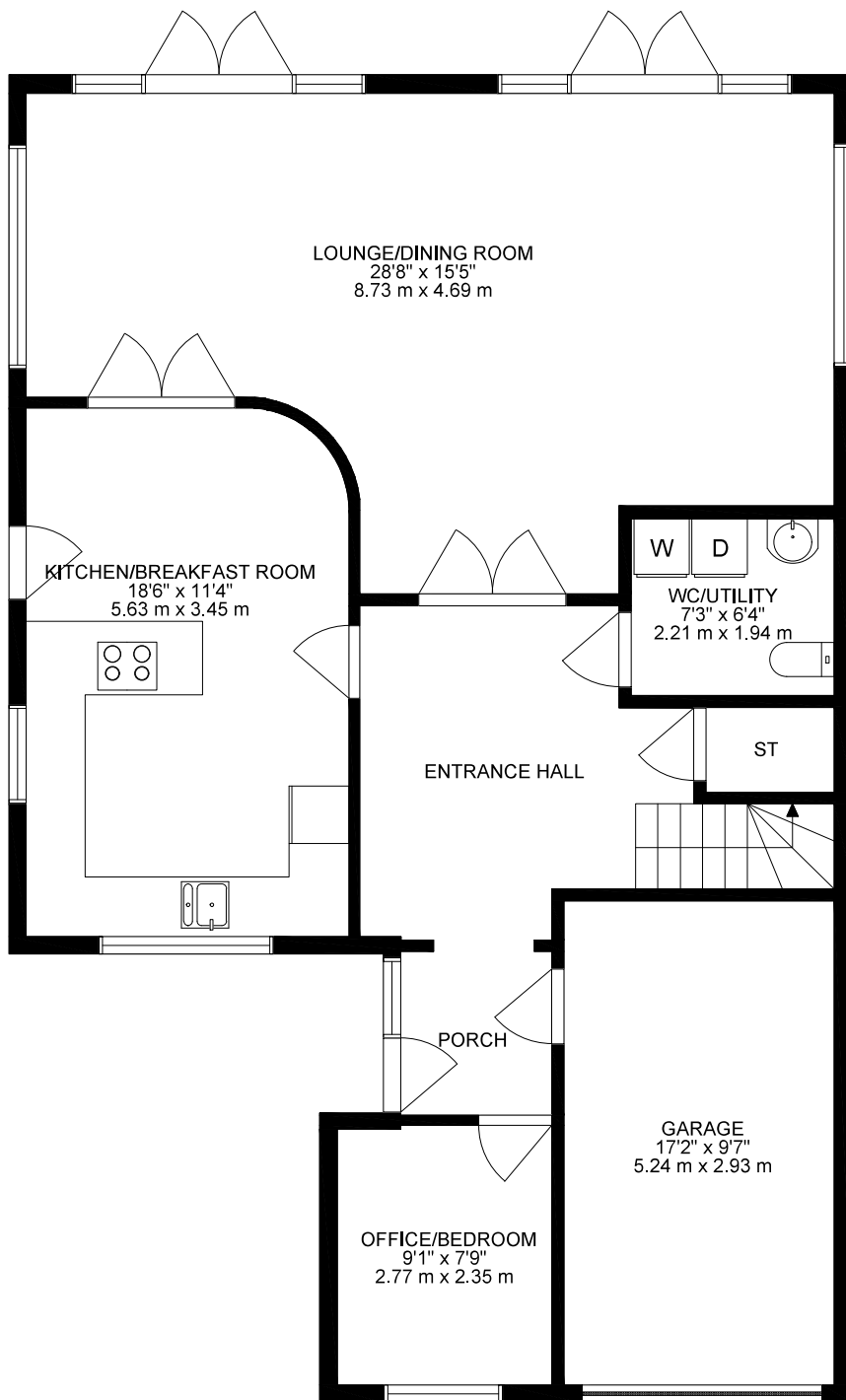
EPC C Council Tax Band F

01202 434365

ferndown@winkworth.co.uk







GROSS INTERNAL AREA
 FLOOR 1: 1053 SQ FT, 97.8 m², FLOOR 2: 804 SQ FT, 74.7 m²
 TOTAL: 1905 SQ FT, 177 m²
 SIZE AND DIMENSIONS ARE APPROXIMATE, ACTUAL MAY VARY



LOCATION

Dusbury Crescent is a premier residential road which is conveniently positioned less than a five minute walk from Ferndown town centre, which features a range of shops, cafes and amenities including an M&S Food hall and a championship golf course. There are bus routes within a short walk giving you easy access to Bournemouth, Poole & Wimborne all of which have an excellent range of shops, bars, restaurants and leisure facilities. Award winning sandy beaches are just twenty minutes away in Bournemouth and the nearby A31 provides quick access to the New Forest, Southampton and London.

Winkworth Ferndown

406 Ringwood Road, Ferndown, Dorset, BH22 9AU

01202 434365 | ferndown@winkworth.co.uk

winkworth.co.uk/ferndown

Winkworth