



HALDON ROAD, SW18

**£2,000 PER MONTH PART FURNISHED, UNFURNISHED**

**A charming two bedroom garden flat on a quiet residential street a short walk from East Putney**

Southfields | 020 8877 1000 | southfields@winkworth.co.uk

**Winkworth**

for every step...

[winkworth.co.uk](http://winkworth.co.uk)



## **DESCRIPTION:**

This attractive property benefits from a generous master bedroom at the front, and a smaller second bedroom perfect as a single or a study. Both bedrooms are serviced by a bathroom with bath and shower over.

The open-plan reception room provides ample space for both living and dining and the spacious kitchen is adjacent with an abundance of storage. French doors lead from the reception room to a sunny south facing garden with paving and raised beds around the border, perfect for alfresco dining. The garden can also be accessed from the street via a side gate.

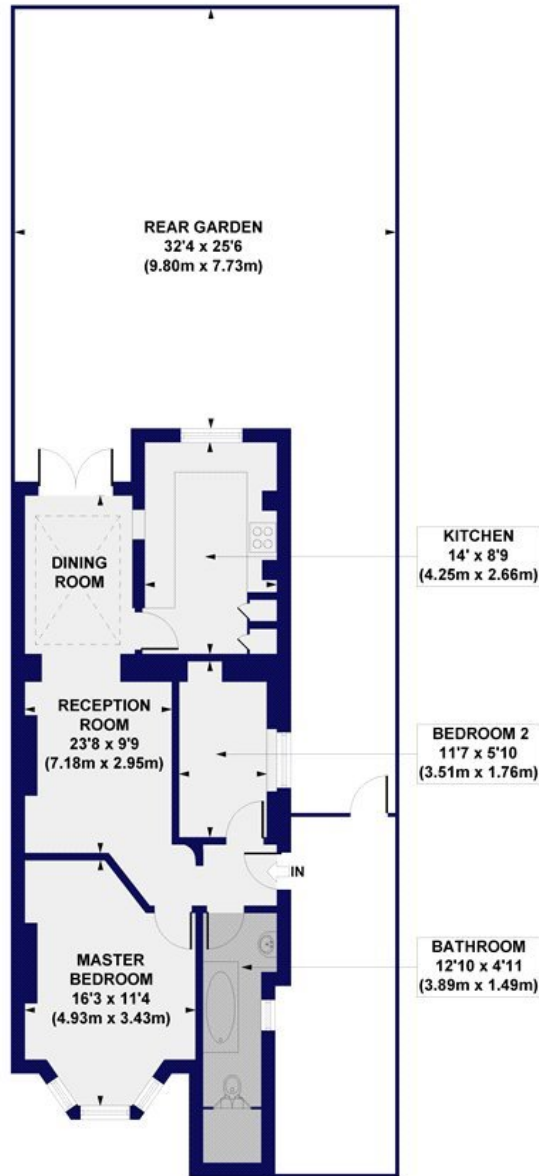
Haldon Road is a popular residential road located only a short distance from East Putney underground and Putney mainline stations. There are also numerous buses with swift access to Clapham Junction and beyond, as well the Thames Clipper service offering a fantastic commute via the river. Wandsworth Southside Shopping Centre is also close by along with the open spaces of Wandsworth Park with its tree lined riverside walks.



## ACCOMMODATION

Long Let, 2 Bedrooms, 1 Reception Room, 1 Bathroom, Flat/Apartment, Basement, Garden, Residents Parking, Period, Pets, Part Furnished, Unfurnished, 686 Approx Sq Ft

**Haldon Road, SW18**  
**Approx. Gross Internal Floor Area 686 sq. ft / 63.74 sq. m**

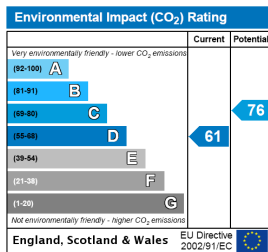
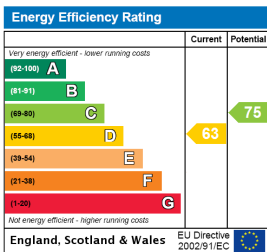


GROUND FLOOR

All measurements of walls, doors, windows, fittings and appliances, including their size and location, are shown as standard sizes and do not constitute any warranty or representation by the seller, their agent or CP Creative. Any intending purchaser must satisfy himself by inspection or otherwise as to the correctness of the information contained in these plans. This plan is for illustrative purposes only and should be used as such by any prospective purchasers.



This floorplan is for illustration purposes only and is not to scale. The position and size of doors, windows, appliances and other features are approximate.



Southfields | 020 8877 1000 | southfields@winkworth.co.uk



for every step...

winkworth.co.uk

Winkworth wishes to inform prospective buyers and tenants that these particulars are a guide and act as information only. All our details are given in good faith and believed to be correct at the time of printing but they don't form part of an offer or contract. No Winkworth employee has authority to make or give any representation or warranty in relation to this property. All fixtures and fittings, whether fitted or not are deemed removable by the vendor unless stated otherwise and room sizes are measured between internal wall surfaces, including furnishings.