



## KENTON LANE, MIDDLESEX, HA3 £165,000 LEASEHOLD

Tenure: Leasehold - Approx. 65 Years Remaining

Ground Rent: £0.00

Service Charge: £0.00

EPC Rating: D

Council Tax Band: C

Harrow | 020 8861 3933 | harrow@winkworth.co.uk

**Winkworth**

for every step...

*winkworth.co.uk*



### DESCRIPTION:

We are pleased to present this charming ground floor apartment situated in a desirable location. This period property offers a blank canvas for an avid investor looking for a new project.

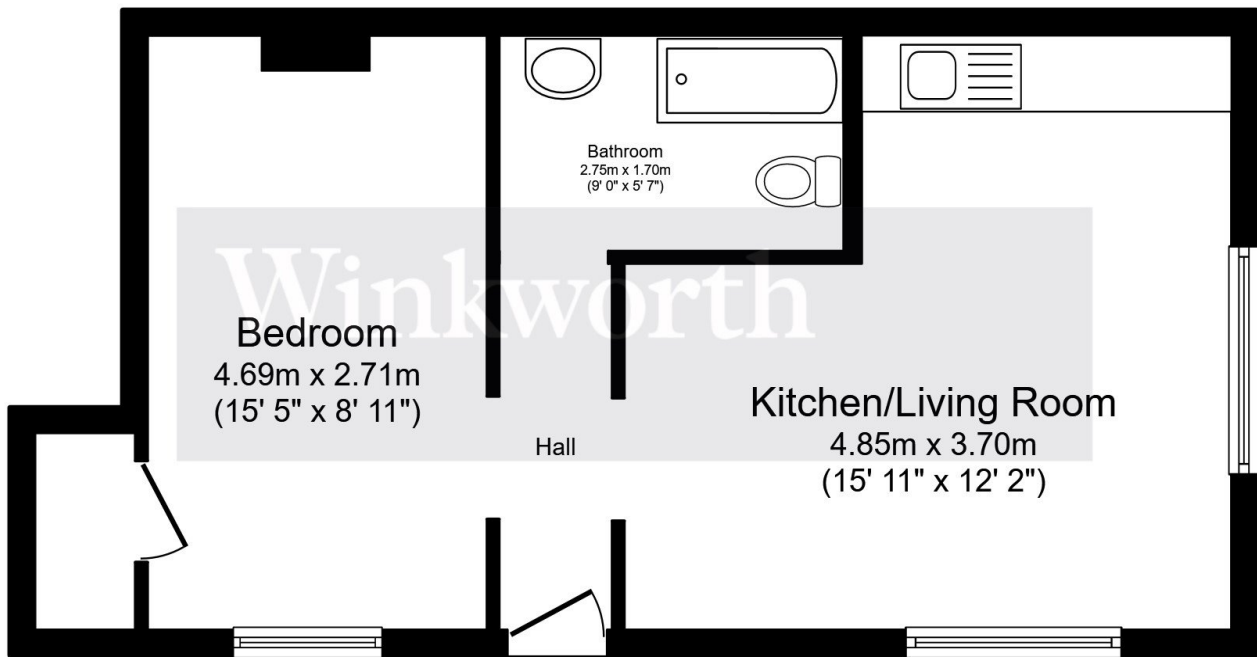
The open-plan living area is flooded with natural light, creating a warm and inviting atmosphere.

Convenience is key with this property, as it is located within close proximity to local amenities, shops, and transport links. The surrounding area offers an array of leisure activities, including parks, restaurants, and cultural attractions.

Don't miss out on this fantastic investment opportunity to own a charming ground floor apartment in a sought-after location.



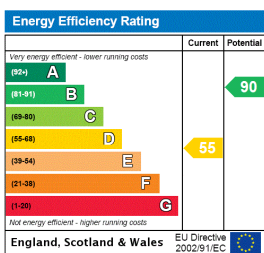




Total floor area 42.0 m<sup>2</sup> (452 sq.ft.) approx

This floor plan is for illustrative purposes only. It is not drawn to scale. Any measurements, floor areas (including any total floor area), openings and orientation are approximate. No details are guaranteed, they cannot be relied upon for any purpose and they do not form part of any agreement. No liability is taken for any error, omission or misstatement. A party must rely upon its own inspection(s). Powered by [www.focalagent.com](http://www.focalagent.com)

This floorplan is for illustration purposes only and is not to scale. The position and size of doors, windows, appliances and other features are approximate.



Harrow | 020 8861 3933 | [harrow@winkworth.co.uk](mailto:harrow@winkworth.co.uk)

for every step...

[winkworth.co.uk](http://winkworth.co.uk)

Winkworth wishes to inform prospective buyers and tenants that these particulars are a guide and act as information only. All our details are given in good faith and believed to be correct at the time of printing but they don't form part of an offer or contract. No Winkworth employee has authority to make or give any representation or warranty in relation to this property. All fixtures and fittings, whether fitted or not are deemed removable by the vendor unless stated otherwise and room sizes are measured between internal wall surfaces, including furnishings.