



LINKS VIEW, FINCHLEY, LONDON, N3
£699,950 FREEHOLD

A THREE BEDROOM TERRACED HOUSE WITH AMPLE LIVING SPACE IN EXCELLENT CONDITION

Finchley | 020 8349 3388 | finchley@winkworth.co.uk



DESCRIPTION:

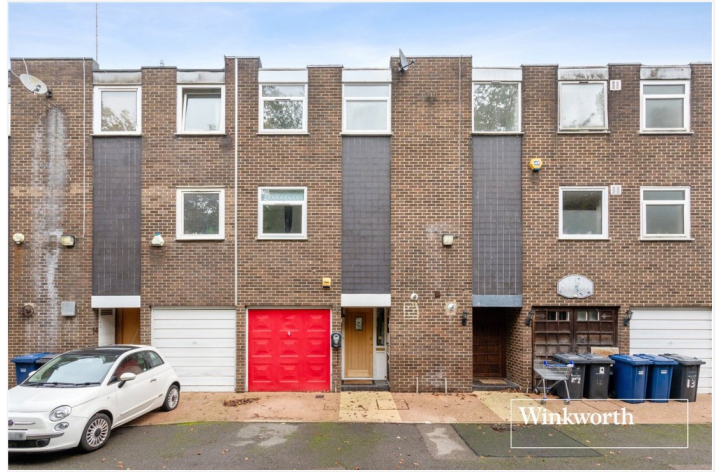
We are pleased to offer this well-presented three bedroom terraced townhouse offering circa 1300 sq.ft of living space (including the integral garage), situated in a private cul-de-sac off Dollis Road. Ideally placed for local amenities, including Finchley Central underground station, recreational parkland and Outstanding Ofsted Rated schools, this lovely family home offers ample space over four floors and comprises spacious reception room with sliding doors to rear garden on the lower ground floor, an extended modern fitted open plan kitchen/living/dining room offering plenty natural light and a wc to the ground floor with a good sized bedroom with en suite to the first floor and two bedrooms and bathroom on the top floor. Further benefits include off street parking for two cars and an integral garage. An internal viewing is highly recommended!

AT A GLANCE

- Spacious terraced family home
- Private road
- Large reception room
- Kitchen/dining area
- Three bedrooms
- Two bathrooms
- Two car parking spaces
- Garage

COUNCIL TAX: Band E

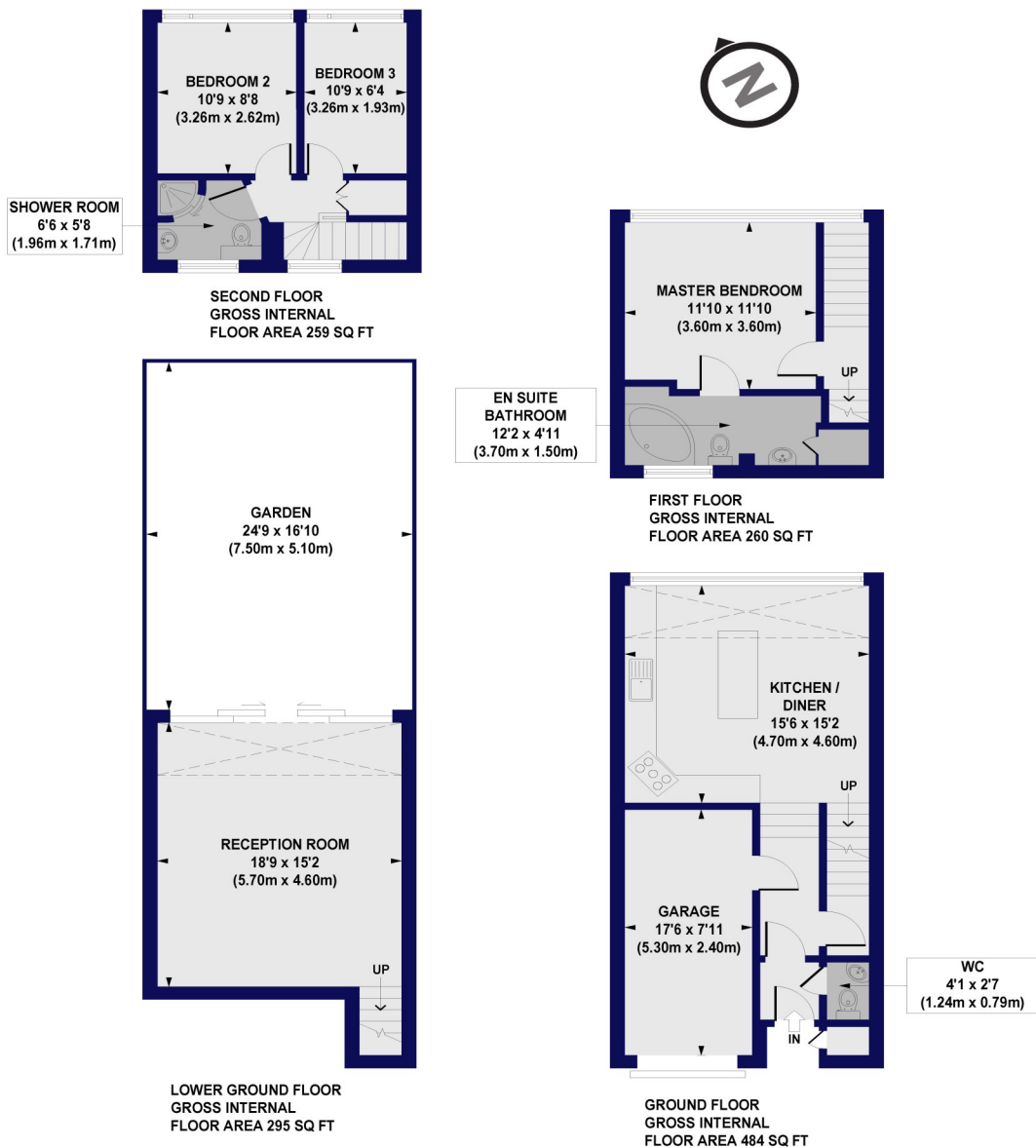




Links View, N3

Approx. Gross Internal Floor Area 1298 sq. ft / 120.59 sq. m (Including Garage)

Approx. Gross Internal Floor Area 1150 sq. ft / 106.81 sq. m (Excluding Garage)



All measurements of walls, doors, windows, fittings and appliances, including their size and location, are shown as standard sizes and do not constitute any warranty or representation by the seller, their agent or CP Creative. Any intending purchaser must satisfy himself by inspection or otherwise as to the correctness of the information contained in these plans. This plan is for illustrative purposes only and should be used as such by any prospective purchasers.

Winkworth

