



PAVILION TERRACE, LONDON, W12
£3,900 PER MONTH

A FANTASTIC DUPLEX MAISONETTE CLOSE TO
THE AMAZING AMENITIES OF WHITE CITY
WESTFIELD AND NOTTING HILL

North Kensington | 020 7792 5000 | northkensington@winkworth.co.uk



for every step...

winkworth.co.uk



Substantial first and second floor four bedroom and two-bathroom duplex maisonette with a direct large private garden. The property offers delightful period features, high ceilings and masses of natural light. This property has style and charm in abundance.

On the first-floor, the property comprises of a large eat-in kitchen/dining room, an open plan large living room, one large double bedroom, a spacious shower room and stairs down to the large garden. On the second floor there is a master bedroom with en-suite bathroom and two further double bedrooms.

The property has great transport links with the local tube stations less than 10 minutes from the flat. You are also a short walk away from White City and the Westfield shopping centre where you can enjoy shopping and eating out at some of the great restaurants and bars.

AT A GLANCE

- FOUR BEDROOMS
- 2 BATHROOMS
- PRIVATE GARDEN
- CLOSE TO TRANSPORT LINKS
- BRIGHT AND SPACIOUS



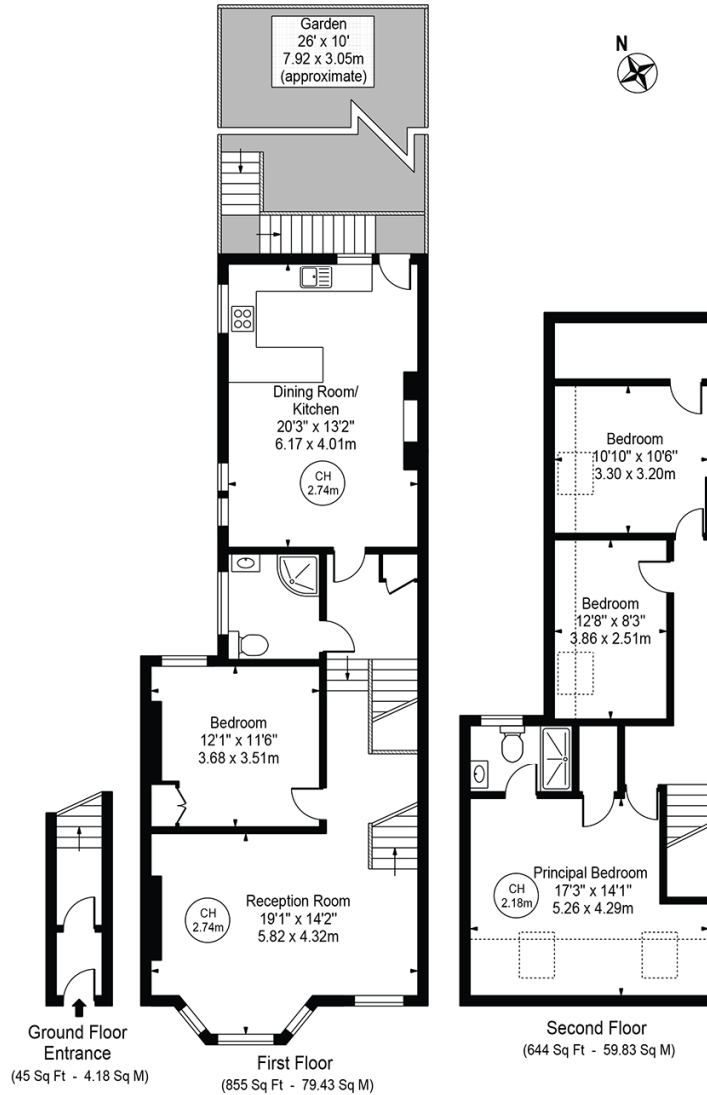


Pavillion Terrace

Approx. Total Internal Area 1544 Sq Ft - 143.44 Sq M
(Including Restricted Height Area)

Approx. Gross Internal Area 1440 Sq Ft - 133.78 Sq M
(Excluding Restricted Height Area)

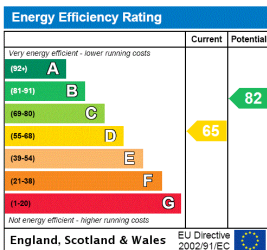
Approx. External Area Of Garden 260 Sq Ft - 24.16 Sq M



For Illustration Purposes Only - Not To Scale

This floor plan should be used as a general outline for guidance only and does not constitute in whole or in part an offer or contract. Any intending purchaser or lessee should satisfy themselves by inspection, searches, enquiries and full survey as to the correctness of each statement. Any areas, measurements or distances quoted are approximate and should not be used to value a property or be the basis of any sale or let. Copyright Morriarti Photography & Design LTD

This floorplan is for illustration purposes only and is not to scale. The position and size of doors, windows, appliances and other features are approximate.



North Kensington | 020 7792 5000 | northkensington@winkworth.co.uk

Winkworth

for every step...

winkworth.co.uk

Winkworth wishes to inform prospective buyers and tenants that these particulars are a guide and act as information only. All our details are given in good faith and believed to be correct at the time of printing but they don't form part of an offer or contract. No Winkworth employee has authority to make or give any representation or warranty in relation to this property. All fixtures and fittings, whether fitted or not are deemed removable by the vendor unless stated otherwise and room sizes are measured between internal wall surfaces, including furnishings.