



SOUTHFIELD ROAD, W4
£500,000 FREEHOLD

TWO BEDROOM GROUND FLOOR GARDEN MAISONETTE

Chiswick | 020 8994 7096 | chiswick@winkworth.co.uk

Winkworth

for every step...

winkworth.co.uk



DESCRIPTION:

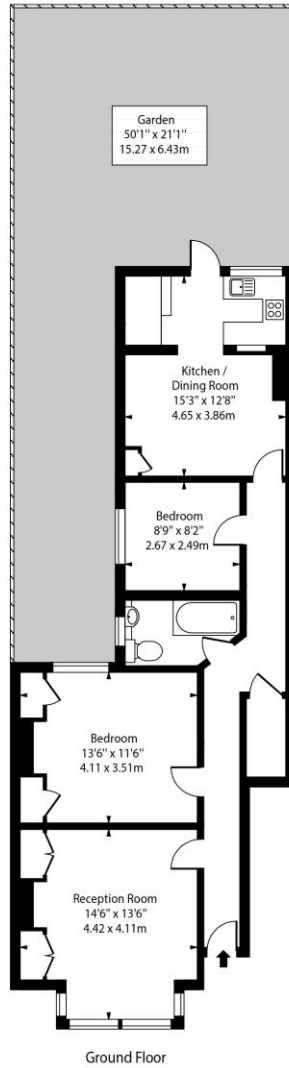
A spacious, two double bedroom, ground floor maisonette with a wealth of period charm and a private garden. Priced to reflect works required. Offered with no onward chain.

ACCOMMODATION

Period Property
Two Double Bedrooms
Period Features
Own Rear Garden
No Onward Chain



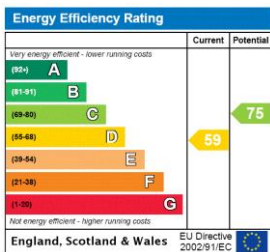
Southfield Road, W4



Approx Gross Internal Area 809 Sq Ft - 75.16 Sq M

This floor plan should be used as a general outline for guidance only and does not constitute in whole or in part an offer or contract. Any intending purchaser or lessee should satisfy themselves by inspection, searches, enquiries and full survey as to the correctness of each statement. Any areas, measurements or distances quoted are approximate and should not be used to value a property or be the basis of any sale or let.

This floorplan is for illustration purposes only and is not to scale. The position and size of doors, windows, appliances and other features are approximate.



Chiswick | 020 8994 7096 | chiswick@winkworth.co.uk



for every step...

winkworth.co.uk

Winkworth wishes to inform prospective buyers and tenants that these particulars are a guide and act as information only. All our details are given in good faith and believed to be correct at the time of printing but they don't form part of an offer or contract. No Winkworth employee has authority to make or give any representation or warranty in relation to this property. All fixtures and fittings, whether fitted or not are deemed removable by the vendor unless stated otherwise and room sizes are measured between internal wall surfaces, including furnishings.