

WINCHESTER STREET, SW1V

£750,000

LEASEHOLD

At a glance...

- One Double Bedroom
- Garden
- Excellent Condition
- Bright Throughout
- Long Leasehold
- Council Tax Band: F

Winkworth

for every step...



Energy Efficiency Rating		Current	Potential
Very energy efficient - lower running costs			
(92+)	A		
(81-91)	B		
(69-80)	C		
(55-68)	D	70	75
(39-54)	E		
(21-38)	F		
(1-20)	G		
Not energy efficient - higher running costs			
England, Scotland & Wales		EU Directive 2002/91/EC	

WINCHESTER STREET, SW1V

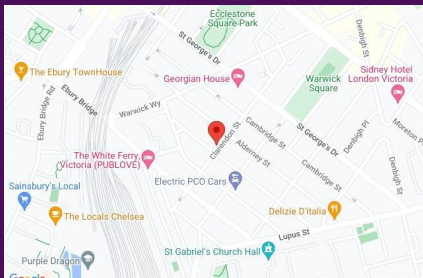
£750,000

LEASEHOLD

A very exciting opportunity to purchase this fantastic apartment located on the corner of Winchester Street and Clarendon Street in the heart of the Pimlico Grid. Accessed via its own front door the flat has been beautifully presented and well maintained by the current owner.

Being in a corner building the flat is incredibly bright and light throughout having windows looking out at different aspects.

Briefly the accommodation comprises a large reception room, double bedroom with storage, private patio garden, modern bathroom and separate kitchen. The flat has also made the most of the vault spaces available to it and therefore offers an extra dining area as well as a utility room.

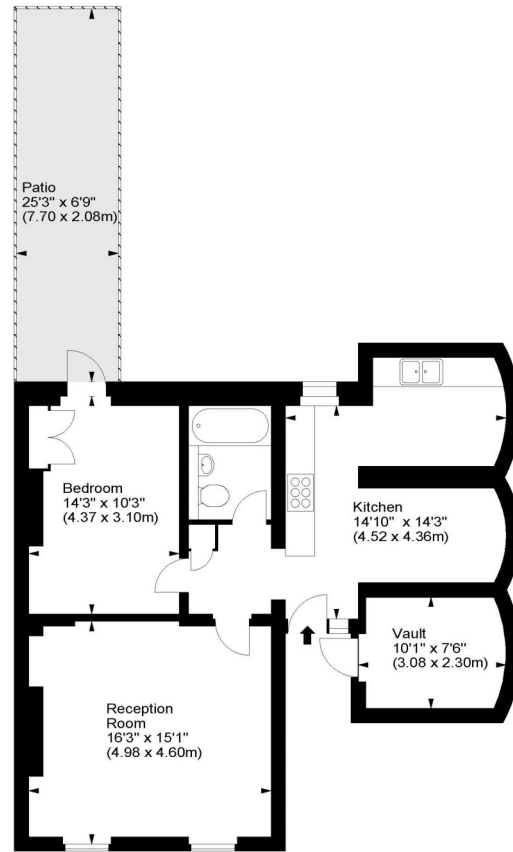


winkworth wishes to inform prospective buyers and tenants that these particulars are a guide and act as information only. All our details are given in good faith and believed to be correct at the time of printing but they don't form part of an offer or contract. No winkworth employee has authority to make or give any representation or warranty in relation to this property. All fixtures and fittings, whether fitted or not are deemed removable by the vendor unless stated otherwise and room sizes are measured between internal wall surfaces - including fireplaces.

Winchester Street, SW1



Approx. Gross Internal Area
716 Sq Ft - 66.52 Sq M
Approx. Vault Area
71 Sq Ft - 6.60 Sq M
Approx. Total Area
787 Sq Ft - 73.11 Sq M



Lower Ground Floor

For illustration purposes only. Not to scale.
All measurements are taken and shown at floor level.
www.r3photography.co.uk © Photography / Floor Plans / Lease Plans / EPCs



Pimlico & Westminster

020 7828 1786

pimlico@winkworth.co.uk

winkworth.co.uk/pimlico-westminster

Winkworth

for every step...