



## Southwell Gardens, South Kensington, London, SW7

£969.23 per week\* / £4,200 per month – Unfurnished

An impressive and well-proportioned two double bedroom, two bathroom flat located on the ground floor of this handsome period building.

2 Bedrooms | 1 Reception Room | 2 Bathrooms | Ground Floor Flat | 1,038 Approx sq ft | EPC: E | Tax Band G

APPLICANT FEES MAY BE APPLICABLE  
DEPOSIT OF 5 WEEKS' RENT  
HOLDING DEPOSIT OF 1 WEEK'S RENT

**Winkworth**



## DESCRIPTION

An impressive and well-proportioned two double bedroom, two bathroom flat located on the ground floor of this handsome period building. The property benefits from a south-facing reception room, separate kitchen, master bedroom with en-suite bathroom and a further second bedroom, separate shower room and separate guest cloakroom. Both bedrooms also benefit from excellent built-in storage. The property is available immediately on an unfurnished basis.



## ACCOMMODATION

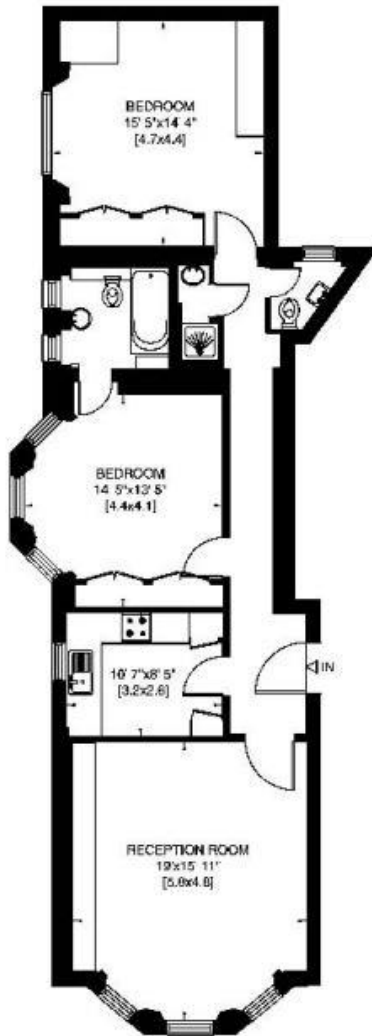
2 Bedrooms, 1 Reception Room, 2 Bathrooms, Ground Floor Flat, Unfurnished, 1,038 Approx Sq ft

## COUNCIL TAX BAND

Band G



Gross Internal Area: 96 Sq. metres  
1038 Sq. feet



RAISED GROUND FLOOR FLAT

Energy Efficiency Rating		
	Current	Potential
Very energy efficient - lower running costs		
(92+) <b>A</b>		
(81-91) <b>B</b>		
(69-80) <b>C</b>		<b>75</b>
(55-68) <b>D</b>		
(39-54) <b>E</b>	<b>43</b>	
(21-38) <b>F</b>		
(1-20) <b>G</b>		
Not energy efficient - higher running costs		
<b>England, Scotland &amp; Wales</b>	EU Directive 2002/91/EC	

This floorplan is for illustration purposes only and is not to scale. The position and size of doors, windows, appliances and other features are approximate.

\*Please note, the rent cannot be paid on a weekly basis

South Kensington Lettings | 020 7370 6767 | [lettings.southken@winkworth.co.uk](mailto:lettings.southken@winkworth.co.uk)



[winkworth.co.uk](http://winkworth.co.uk)

for every step...

Winkworth wishes to inform prospective buyers and tenants that these particulars are a guide and act as information only. All our details are given in good faith and believed to be correct at the time of printing but they don't form part of an offer or contract. No Winkworth employee has authority to make or give any representation or warranty in relation to this property. All fixtures and fittings, whether fitted or not are deemed removable by the vendor unless stated otherwise and room sizes are measured between internal wall surfaces, including furnishings.