



79 Woolsbridge Road
Ashley Heath, Ringwood BH24 2LY
Guide Price £850,000

Winkworth



**GUIDE PRICE £850,000
FREEHOLD**

This stunning four bedroom detached bungalow has been completely refurbished by the current owners to an excellent standard throughout, including a luxury kitchen/diner and modern bathrooms.

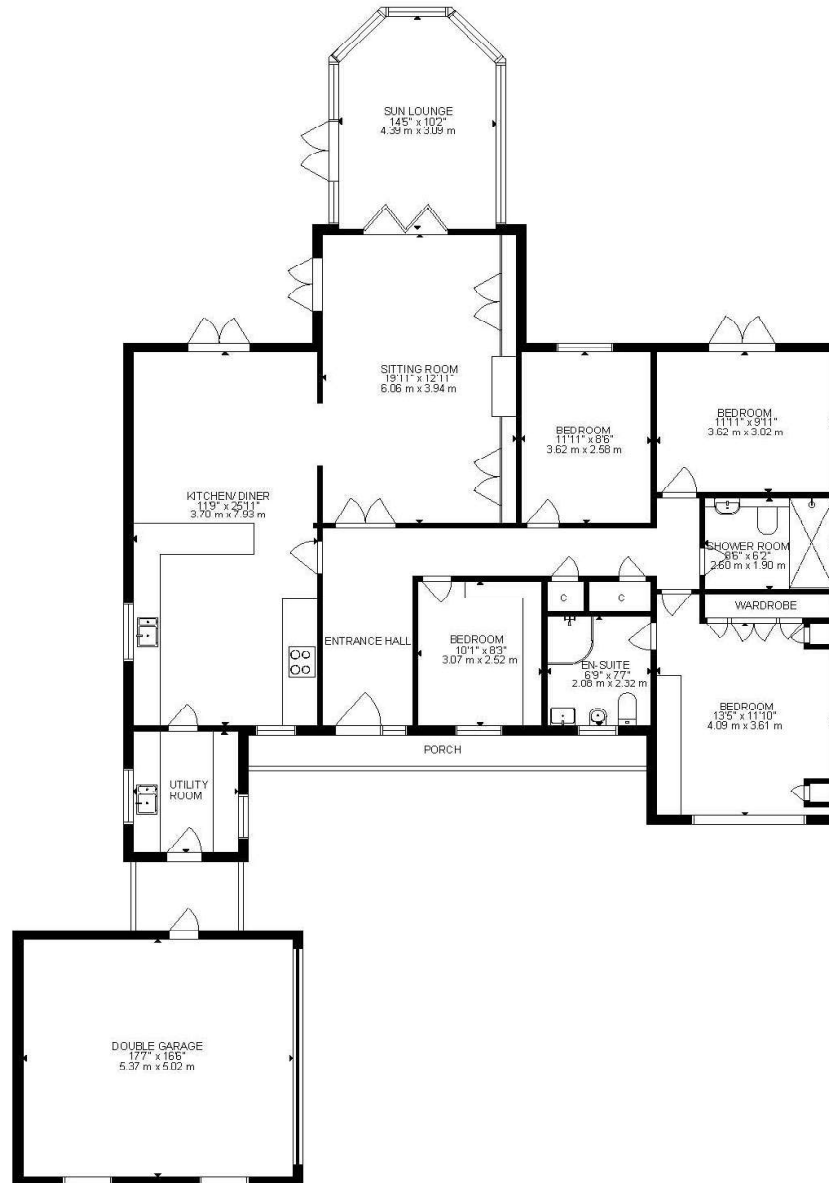
The property further benefits from a detached double garage with electric door, a secluded west facing plot and off road parking for several vehicles.

**Four Bedrooms
Sun Lounge
Electric Car Charging Point
Sitting Room With Feature Fireplace
Luxury Modern Kitchen/Diner
Utility Room
Double Garage With Electric Door
En-suite Shower Room
Detached Bungalow
Secluded Plot
Landscaped West Facing Garden
Block Paved Driveway For Several Vehicles**

EPC D | Council Tax Band F

**01202 434365
ferndown@winkworth.co.uk**





GROSS INTERNAL AREA
 TOTAL: 1871.6 SQ.FT, 137.8 m²
 SIZE AND DIMENSIONS ARE APPROXIMATE, ACTUAL MAY VARY



LOCATION

Woolsbridge Road is a highly sought after location on the outskirts of the historic market town of Ringwood on the Hampshire/Dorset borders. The area offers a range of local facilities including a Marks and Spencer's convenience store, Recreation Park and Tennis Club. Moors Valley Country Park and the protected heathland and woods of Avon Heath are all easily accessible. The A31 provides highly convenient transport links to Ringwood and Ferndown which both provide comprehensive shopping, leisure, and educational facilities. Additionally, Bournemouth (12 miles), Southampton (16 miles) and Salisbury (18 miles), are all easily accessible, plus the New Forest National Park is within three miles distance.

Winkworth Ferndown

406 Ringwood Road, Ferndown, Dorset, BH22 9AU

01202 434365 | ferndown@winkworth.co.uk

winkworth.co.uk/ferndown

Winkworth