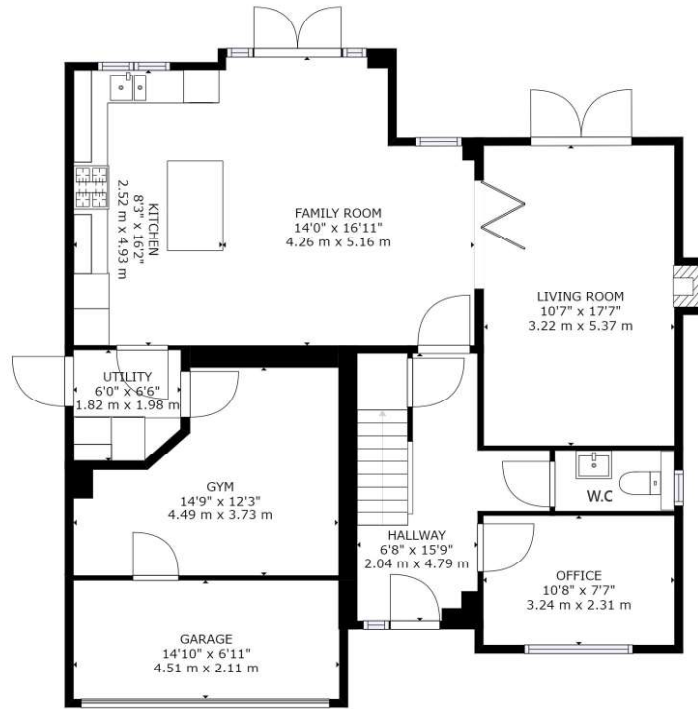


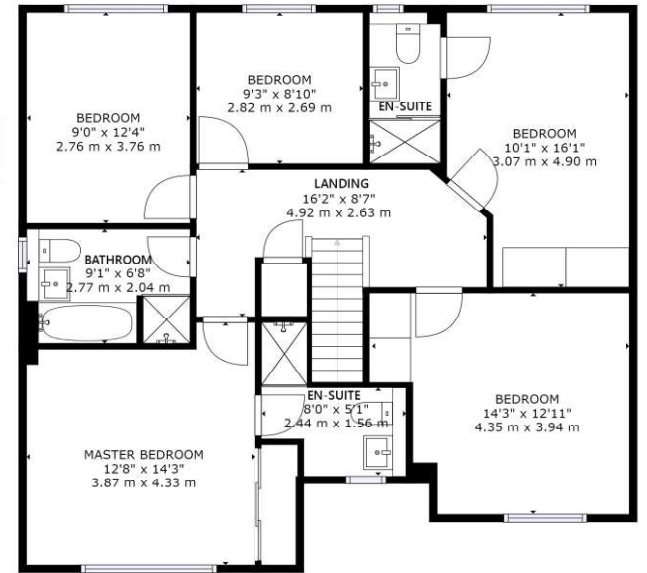


9 Horseshoe Crescent
Ferndown, BH22 9FX **GUIDE**
PRICE £735,000

Winkworth



FLOOR 1



FLOOR 2

GROSS INTERNAL AREA
 FLOOR 1: 1063 sq. ft, 99 m², FLOOR 2: 1075 sq. ft, 100 m²
 EXCLUDED AREAS: , GARAGE: 103 sq. ft, 10 m²
 TOTAL: 2138 sq. ft, 199 m²
 SIZES AND DIMENSIONS ARE APPROXIMATE, ACTUAL MAY VARY.





GUIDE PRICE - £750,000 FREEHOLD

01202 434365 | ferndown@winkworth.co.uk

A fantastic opportunity to purchase this wonderful five bedroom detached house positioned on this prestigious development, close to a range of amenities.

- Five Double Bedrooms
- Three Bathrooms
- Downstairs Cloakroom
- Garage
- Gym
- Study
- Stunning Interior Throughout
- Driveway
- Sought After Development
- Landscaped Garden With Hot Tub





LOCATION

Horseshoe Crescent is a prestigious residential development just a short distance from Ferndown town centre, which has a range of shops, cafes and amenities including an M&S Food Hall. There are bus routes nearby giving you easy access to Bournemouth & Poole, both of which have an excellent range of shops, bars, restaurants and leisure facilities as well as award winning sandy beaches. The nearby A31 provides quick access to the New Forest, Southampton and beyond for the commuter by car.

Winkworth Ferndown

406 Ringwood Road, Ferndown, Dorset, BH22 9AU

01202 434365 | ferndown@winkworth.co.uk

winkworth.co.uk/ferndown

Winkworth