



WATER LANE, TW9
£735,000 FREEHOLD

A TWO BEDROOM MEWS HOUSE

Chiswick | 020 8994 7096 | chiswick@winkworth.co.uk

Winkworth

for every step...

winkworth.co.uk



DESCRIPTION:

A pretty Mews style house offering bright and airy accommodation split over three storeys to offer versatile accommodation. With a large open plan living/kitchen area enjoying fully integrated appliances and direct access to the private courtyard garden, two double bedrooms plus a bespoke bathroom and a further WC to the lower ground floor plus ample storage. The property is energy efficient with underfloor heating powered by ground source heat pumps.

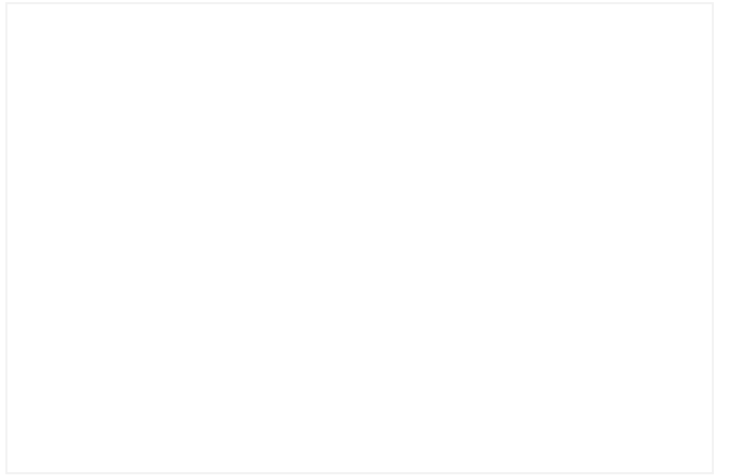
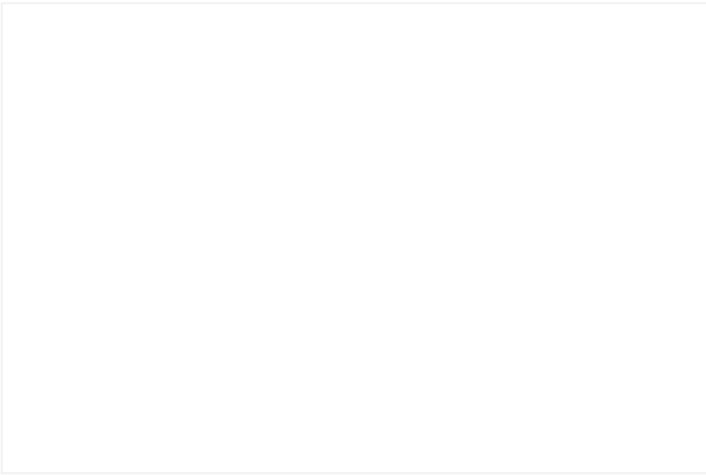
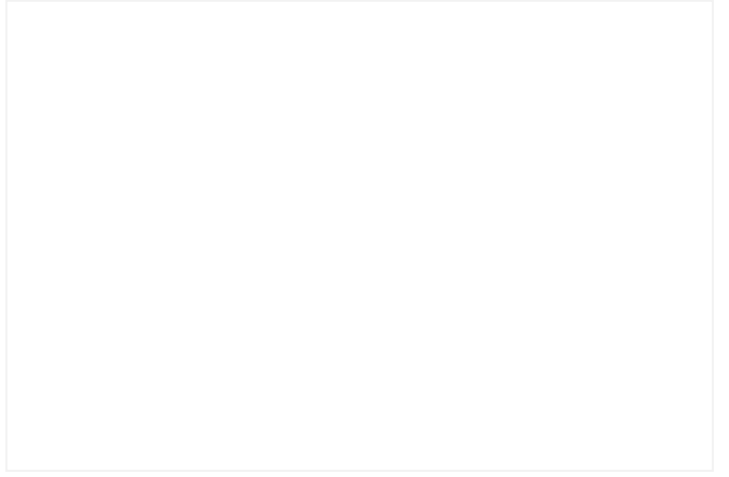
Nestled within the heart of Richmond just moments from one of the most picturesque stretches of The River Thames. Close to Richmond Hill, Richmond Bridge, and central Richmond with its eclectic choice of shops and eateries with Richmond train station (Zone 4); fast service into London Waterloo, Northern Overground Line to Stratford and District Line Tube.

No onward chain. Council Tax Band: E

Parking restriction: No resident parking permits to residents. Lifetime membership of a Car Club

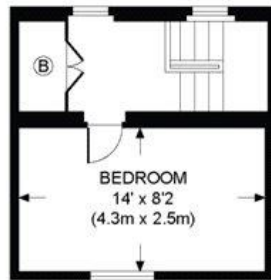
ACCOMMODATION

Freehold
2 Bedrooms
End of Terrace
Patio

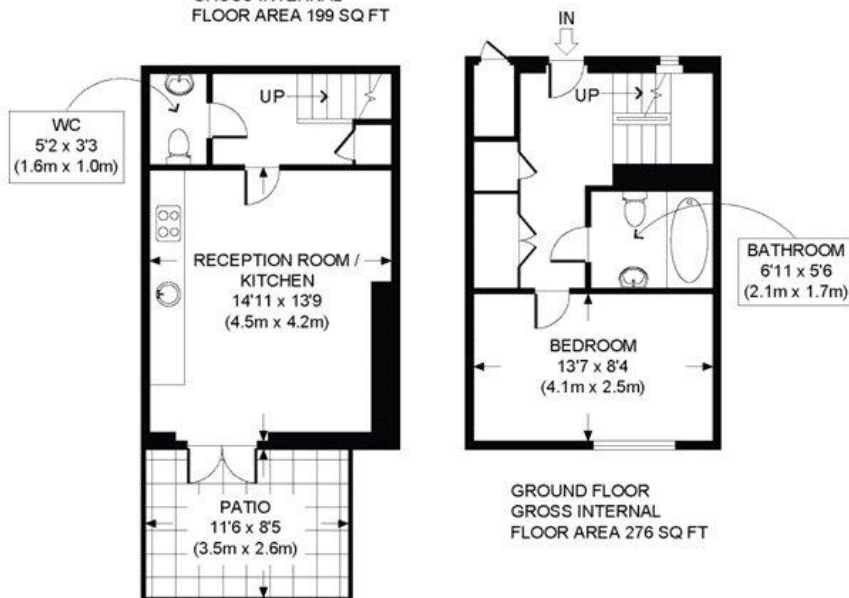


WATER LANE, TW9

TOTAL APPROX. FLOOR AREA 745 SQ. FT. (69.2 SQ. M.)
(EXCLUDING EXTERNAL STORE)



FIRST FLOOR
GROSS INTERNAL
FLOOR AREA 199 SQ FT



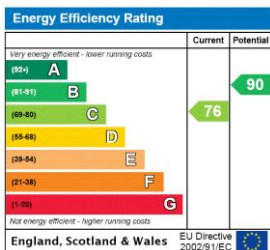
GROUND FLOOR
GROSS INTERNAL
FLOOR AREA 276 SQ FT

BASEMENT
GROSS INTERNAL
FLOOR AREA 270 SQ FT



All measurements walls, doors, windows, fitting and their appliances, their size and locations are shown conventionally and are approximate only and cannot be regarded as being a representation either by the seller or his agent nor zentuvo
www.zentuvo.co.uk

This floorplan is for illustration purposes only and is not to scale. The position and size of doors, windows, appliances and other features are approximate.



Chiswick | 020 8994 7096 | chiswick@winkworth.co.uk

Winkworth

for every step...

winkworth.co.uk

Winkworth wishes to inform prospective buyers and tenants that these particulars are a guide and act as information only. All our details are given in good faith and believed to be correct at the time of printing but they don't form part of an offer or contract. No Winkworth employee has authority to make or give any representation or warranty in relation to this property. All fixtures and fittings, whether fitted or not are deemed removable by the vendor unless stated otherwise and room sizes are measured between internal wall surfaces, including furnishings.