



SNARSGATE STREET, W10
£995,000 FREEHOLD

A CHARMING END OF TERRACE THREE BEDROOM FREEHOLD HOUSE WITH TWO OUTSIDE SPACES

North Kensington | 020 7792 5000 | northkensington@winkworth.co.uk

Winkworth

for every step...

winkworth.co.uk



DESCRIPTION:

A charming end of terrace house with three double bedrooms, a large reception/dining room, separate kitchen, wooden floors in the reception rooms and a patio garden to the rear of the property. The house is neutrally decorated and benefits from fabulous natural light throughout all the rooms. There is plenty of storage space and the possibility to add a further bathroom.

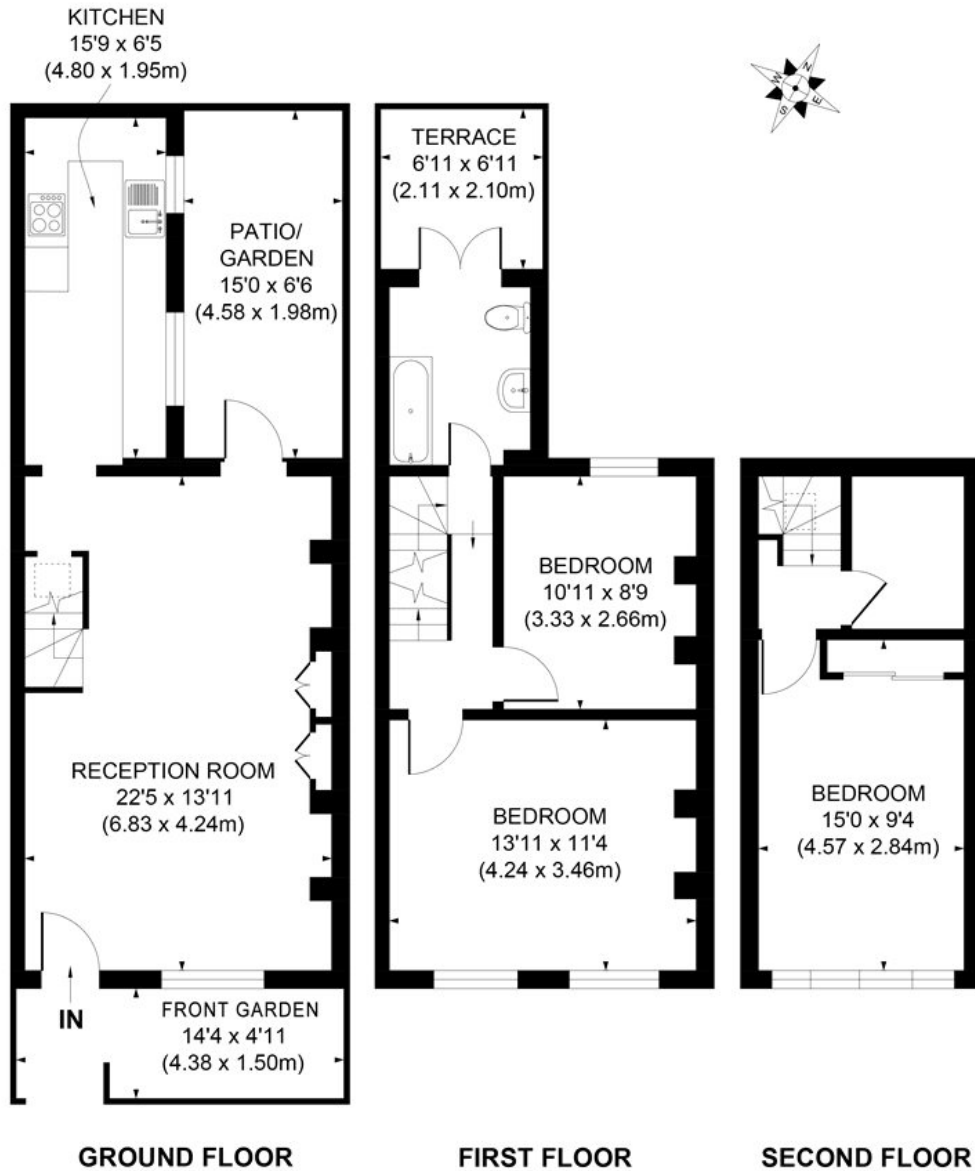
Snarsgate Street is a vibrant street in the heart of North ensington and is within easy reach of Portobello, Golborne Road and Westfield Shopping centre including White City House whilst being a short stroll away from the open spaces on Wormwood Scrubs Park and Latimer Road underground station for the Hammersmith, City and Circle Lines. The A40 is also easily accessed for routes in and out of London.

AT A GLANCE

- End of Terrace Cottage
- Three Double Bedroom
- Large Living Space
- Patio Garden
- Balcony
- Separate Kitchen
- Freehold
- Cul-de-Sac Street
- EPC Rating D







APPROX. GROSS INTERNAL FLOOR AREA 903 SQ FT / 83.88 SQ M

Illustration for identification purpose only, not to scale
All measurements are maximum, and includes wardrobes and window bays where applicable
Prepared by Pixangle ©. Tel 020 8870 2118

This floorplan is for illustration purposes only and is not to scale. The position and size of doors, windows, appliances and other features are approximate.

Energy Efficiency Rating		Current	Potential
Very energy efficient - lower running costs			
(92)	A		
(81-91)	B		
(69-80)	C		
(55-68)	D		
(39-54)	E	55	57
(21-38)	F		
(1-20)	G		
Not energy efficient - higher running costs			
England, Scotland & Wales		EU Directive 2002/91/EC	

North Kensington | 020 7792 5000 | northkensington@winkworth.co.uk



for every step...

winkworth.co.uk

Winkworth wishes to inform prospective buyers and tenants that these particulars are a guide and act as information only. All our details are given in good faith and believed to be correct at the time of printing but they don't form part of an offer or contract. No Winkworth employee has authority to make or give any representation or warranty in relation to this property. All fixtures and fittings, whether fitted or not are deemed removable by the vendor unless stated otherwise and room sizes are measured between internal wall surfaces, including furnishings.