



## Kingsley Mews, Kensington, London, W8

£692.31 per week\* / £3,000 per month – Unfurnished

A charming two bedroom terraced house located on this quiet mews.

2 Bedrooms | 1 Reception Room | 1 Bathroom | Mews House | 755 Approx sq ft | EPC: D

APPLICANT FEES MAY BE APPLICABLE  
HOLDING DEPOSIT OF 1 WEEK'S RENT  
SECURITY DEPOSIT OF 5 WEEKS' RENT

**Winkworth**

[winkworth.co.uk](http://winkworth.co.uk)

for every step...



## DESCRIPTION

The property consists of a spacious open-plan kitchen/reception room with wooden floors, a well-proportioned master bedroom, smaller second bedroom with built-in wardrobes and family bathroom.

The property is available from the beginning of June on an unfurnished basis.

Located on Kingsley Mews close to all amenities of Kensington High Street, Gloucester Road and within walking distance to both Gloucester Road and High Street Kensington underground stations.

## ACCOMMODATION

2 Bedrooms, 1 Reception Room, 1 Bathroom, Mews House, Furnished or Unfurnished, 755 Approx Sq ft

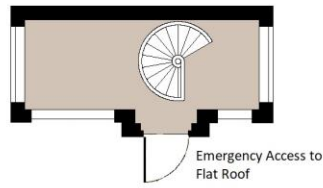
## COUNCIL TAX BAND

Band D

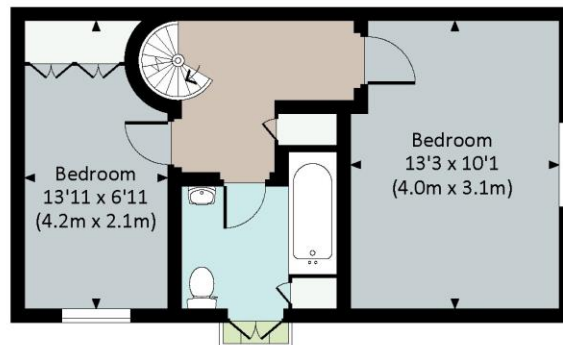


# KINGSLEY MEWS, W8

Approx. gross internal area  
755 Sq Ft. / 70.1 Sq M.



## SECOND FLOOR



## FIRST FLOOR



## GROUND FLOOR



All measurements have been made in accordance with RICS Code of Measuring Practice which are approximate only and only for illustrative purposes. For the avoidance of doubt, Dowling Jones Design shall not be liable for any reliance on these measurements. © 2016 www.dowlingjones.com 020 7610 9933

Energy Efficiency Rating		Current	Potential
Very energy efficient - lower running costs			
(92+)	<b>A</b>		
(81-91)	<b>B</b>		<b>86</b>
(69-80)	<b>C</b>		
(55-68)	<b>D</b>	<b>62</b>	
(39-54)	<b>E</b>		
(21-38)	<b>F</b>		
(1-20)	<b>G</b>		
Not energy efficient - higher running costs			
England, Scotland & Wales		EU Directive 2002/91/EC	

This floorplan is for illustration purposes only and is not to scale. The position and size of doors, windows, appliances and other features are approximate.

\*Please note, rent cannot be paid on a weekly basis.

South Kensington Lettings | 020 7370 6767 | lettings.southken@winkworth.co.uk

[winkworth.co.uk](http://winkworth.co.uk)



for every step...