



WALTERTON ROAD, W9 £500,000 LEASEHOLD

We are delighted to offer this beautiful, well-proportioned, one bedroom second floor apartment (entrance on the first floor), forming part of an attractive converted house located in the heart of this sought-after area. The apartment is ready for immediate occupation, in excellent condition and retains some attractive features including a large bedroom situated on the half landing, sash windows offering a wealth of natural light and a large kitchen/breakfast room. Waltherton Road is a prime residential location located close to local shops, cafes, Paddington Recreation Ground, the fashionable shops of Portobello Road (0.6 miles) and transport links including Westbourne Park Underground Station (Hammersmith & City Line - 0.4 miles).

Double Bedroom | Bathroom | Reception/Dining Room | Kitchen/Breakfast Room | Leasehold

Winkworth

for every step...

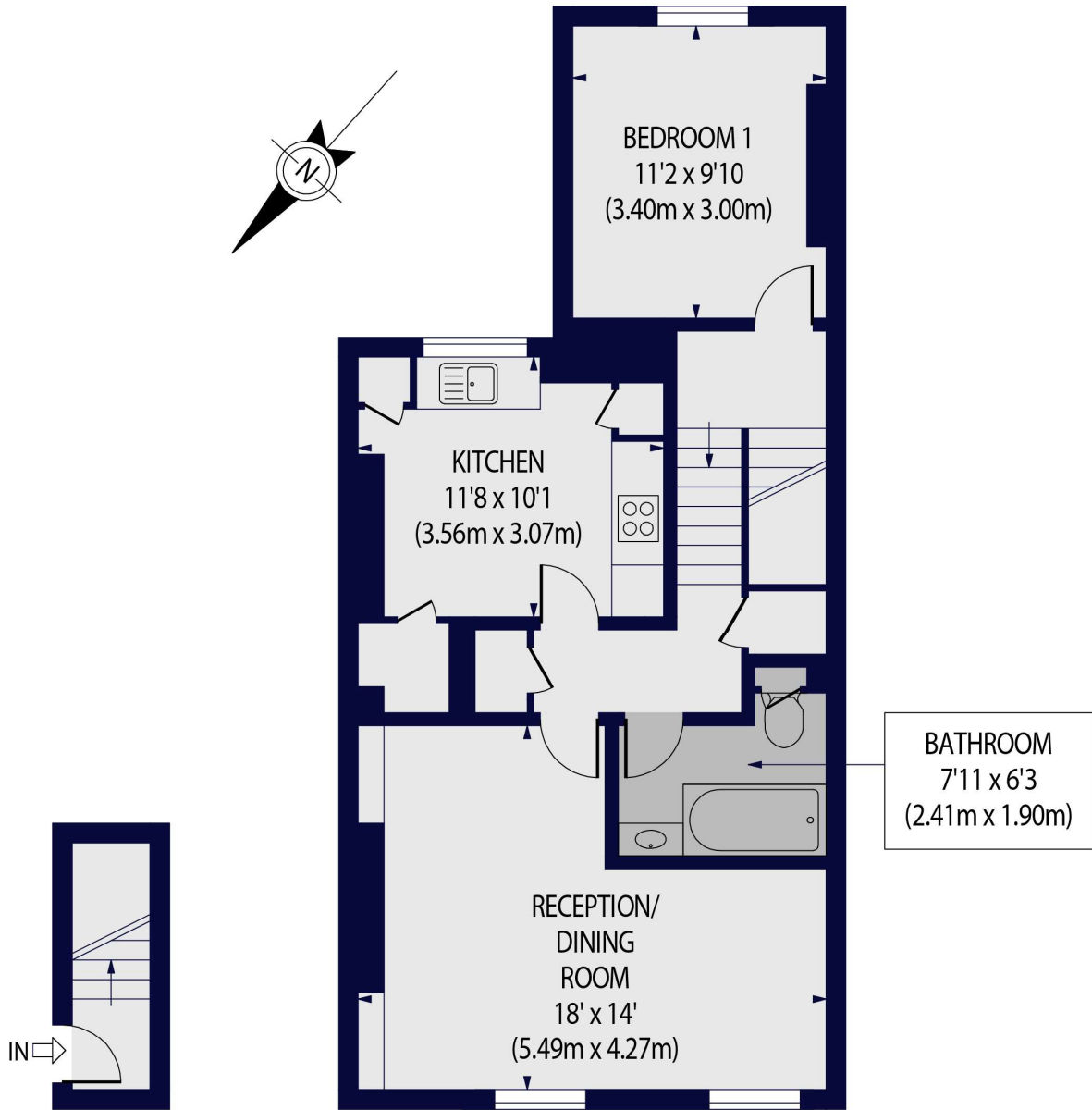
winkworth.co.uk/maida-vale



WALTERTON ROAD, W9 3PF

Approx. Gross Internal Floor Area 661 sq ft. / 61.40 sq.m

 - Ceiling Height



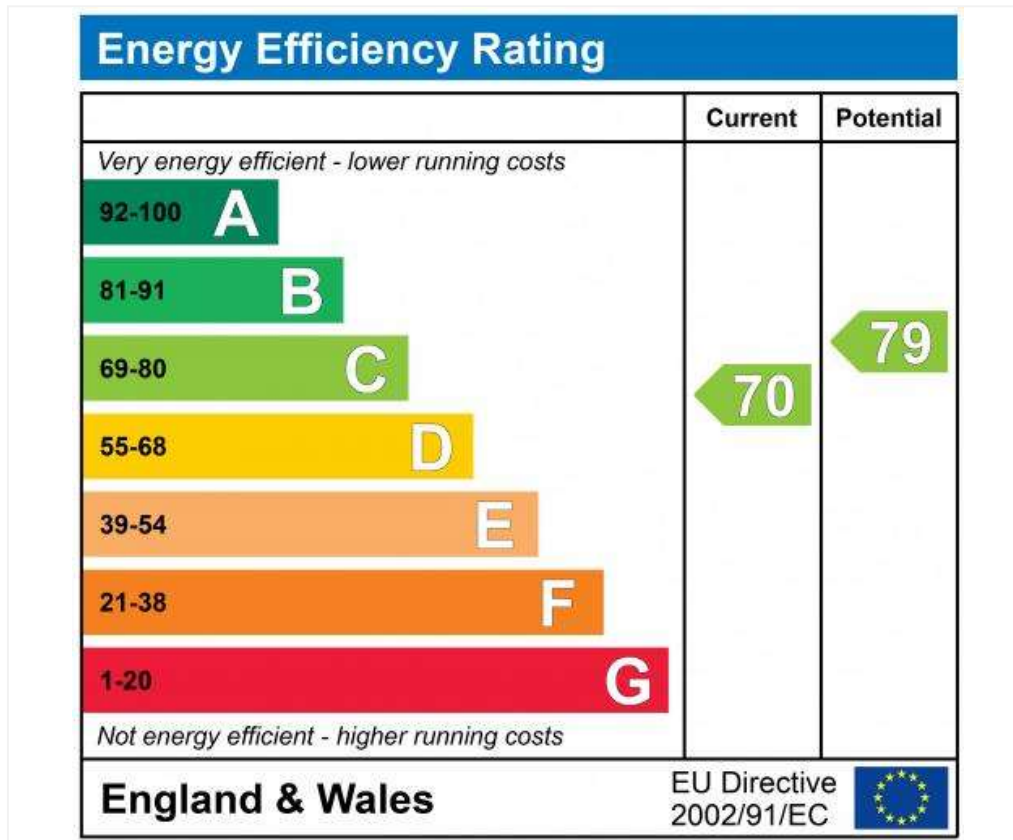
FIRST FLOOR ENTRANCE
GROSS INTERNAL
FLOOR AREA 28 SQ FT

SECOND FLOOR
GROSS INTERNAL
FLOOR AREA 633 SQ FT

For Illustration Purposes Only - Not To Scale Floor Plan by www.nogaphotostudio.com Ref: No.46414

This floor plan should be used as a general outline for guidance only. Any intending purchaser or lessee should satisfy themselves by inspection, searches, enquiries and full survey as to the correctness of each statement. Any areas, measurements or distances quoted are approximate and should not be used to value a property or be the basis of any sale or let.

Winkworth



Tenure: Leasehold

Term: Expires - 01/01/2112

Service Charge: £1230.99 per annum

Ground Rent: £ 0 Annually (subject to increase)

Council Tax Band: C

Where no figures are shown, we have been unable to ascertain the information. All figures that are shown were correct at the time of printing.

Where no figures are shown, we have been unable to ascertain the information. All figures that are shown were correct at the time of printing. These particulars are not an offer or contract, nor part of one. You should not rely on statements by Winkworth in the particulars or by word of mouth or in writing "information" as being factually accurate about the property, its condition or its value. Winkworth does not have any authority to make any representations about the property, and accordingly any information given is entirely without responsibility on the part of the agents, seller(s) or lessor(s). These particulars are prepared on the basis of the information supplied by our client and are a rough guide for information only. The photographs show only certain parts of the property. We are not able to check all of the information and therefore are unable to guarantee accuracy. All interested parties are therefore advised to undertake all necessary inspections and checks that they deem appropriate. Where displayed, the square footage is taken from the floor plans, which are created by an independent supplier. These measurements are approximate and included for illustrative purposes only. The measurements may vary. Winkworth does not make any representation as to the accuracy of these measurements and you should seek to verify them for yourself. Winkworth accept no liability for any loss you may suffer if you rely on these measurements. All fixtures and fittings, whether fitted or not are deemed removable by the vendor unless stated. Any reference to alterations to, or use of, any part of the property does not mean that any necessary planning, building regulations or other consent has been obtained. Amenities and appliances have not been tested

Maida Vale | 211-213 Sutherland Avenue, London, W9 1RU | 020 7289 1692 |



for every step...

winkworth.co.uk/maida-vale

Winkworth wishes to inform prospective buyers and tenants that these particulars are a guide and act as information only. All our details are given in good faith and believed to be correct at the time of printing but they don't form part of an offer or contract. No Winkworth employee has authority to make or give any representation or warranty in relation to this property. All fixtures and fittings, whether fitted or not are deemed removable by the vendor unless stated otherwise and room sizes are measured between internal wall surfaces, including furnishings.