



CECIL ROAD, LONDON, W3
£1,200,000 FREEHOLD

EPC: Band D
Council Tax: Band F

Ealing & Acton | 0208 896 0123 | ealing@winkworth.co.uk

Winkworth

for every step...

winkworth.co.uk



DESCRIPTION:

Winkworth are proud to exclusively offer this fully extended and immaculately presented semi-detached family home. The property provides approximately 1,664 sq ft of internal accommodation which is arranged over three floors and comprises four bedrooms, two bathrooms one of which is en-suite, guest cloakroom and an expansive open-plan reception / dining area with fully-equipped contemporary kitchen complete with a breakfast island. The property further benefits from laminate floors throughout, private front driveway as well as a secluded South-facing rear garden. Viewings in person are highly recommended! Located within a quiet residential area, the house is just moments away from the open green space of North Acton Playing Fields. Commuters benefit from being within easy reach of Acton Main Line station (Elizabeth Line) as well as North Acton and West Acton stations (Central Line) whereas motorists can easily get into Central London via the A40 Westway.



Winkworth

for every step...

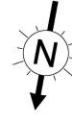



Winkworth

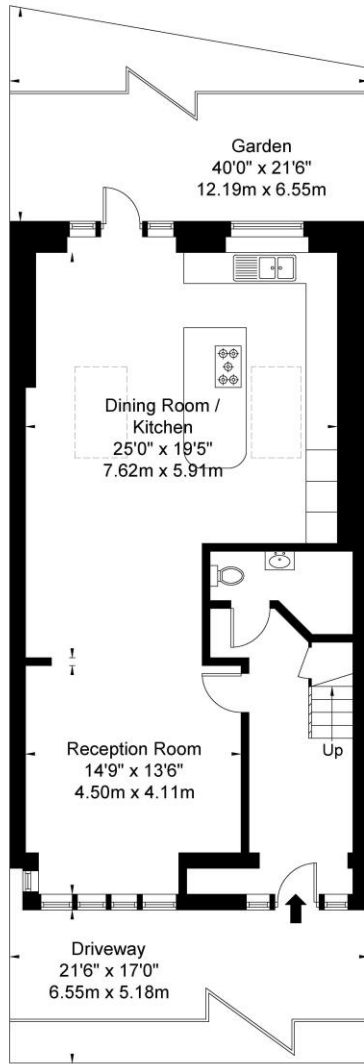
for every step...

Cecil Road, W3 0DB

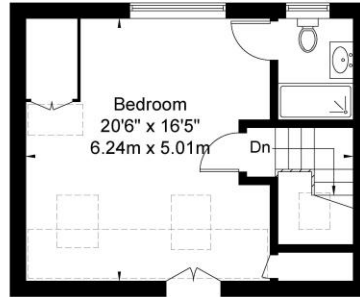
Approx Gross Internal Area = 154.6 sq m / 1664 sq ft



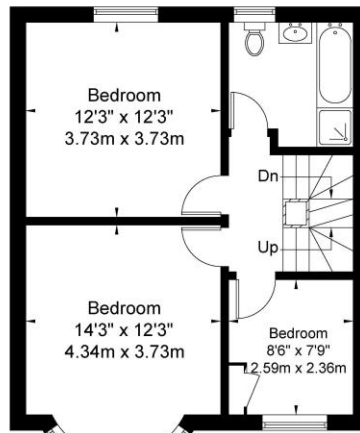
 = Reduced headroom below 1.5m / 5'0"



Ground Floor



Second Floor



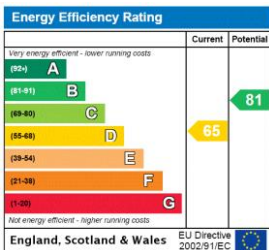
First Floor

Ref

Copyright **BLEUPLAN**

The Floor plan is not to scale and measurements and areas shown are approximate and therefore should be used for illustrative purposes only. The plan has been prepared in accordance with the RICS code of Measuring Practice and whilst we have confidence in the information produced it must not be relied on. If there is any aspect of particular importance, you should carry out or commission your own inspection of the property.
Copyright @ BLEUPLAN

This floorplan is for illustration purposes only and is not to scale. The position and size of doors, windows, appliances and other features are approximate.



Ealing & Acton | 0208 896 0123 | ealing@winkworth.co.uk



for every step...

winkworth.co.uk

Winkworth wishes to inform prospective buyers and tenants that these particulars are a guide and act as information only. All our details are given in good faith and believed to be correct at the time of printing but they don't form part of an offer or contract. No Winkworth employee has authority to make or give any representation or warranty in relation to this property. All fixtures and fittings, whether fitted or not are deemed removable by the vendor unless stated otherwise and room sizes are measured between internal wall surfaces, including furnishings.