



ARLINGTON PARK MANSIONS, CHISWICK, LONDON, W4  
**£420,000 LEASEHOLD**

## A CHARMING ONE BEDROOM MANSION APARTMENT

Chiswick | 020 8994 7096 | [chiswick@winkworth.co.uk](mailto:chiswick@winkworth.co.uk)

**Winkworth**

for every step...

[winkworth.co.uk](http://winkworth.co.uk)





## **DESCRIPTION:**

A charming top floor apartment forming part of the sought after Arlington Park Mansions. A fine example of a mansion apartment with bright and airy living accommodation on the top/fourth floor with an elegant, front aspect lounge, bright kitchen, re-modelled bathroom and large bedroom. The apartment has been well-maintained by our current Vendors and retains an abundance of period characteristics with exceptional ceiling height and original style stripped wood floor to the lounge.

Arlington Park Mansions is an iconic small development opposite and enjoying views of beautiful Turnham Green. Only moments away from Chiswick High Road with it's eclectic choice of shops and eateries as well as several transport links. Gunnersbury Station (zone 2) Tube and Overground, Chiswick Park (District Line) and Turnham Green (District Line) stations are all within close proximity for the smart commuter. Chiswick itself is well positioned for access to the A4 and M4 providing easy access to Heathrow airport and beyond and offers the feel of a green suburb whilst having the city on your front doorstep.

Offered with no onward chain and a share of the freehold.

Lease was granted in 1986 with 999 years.

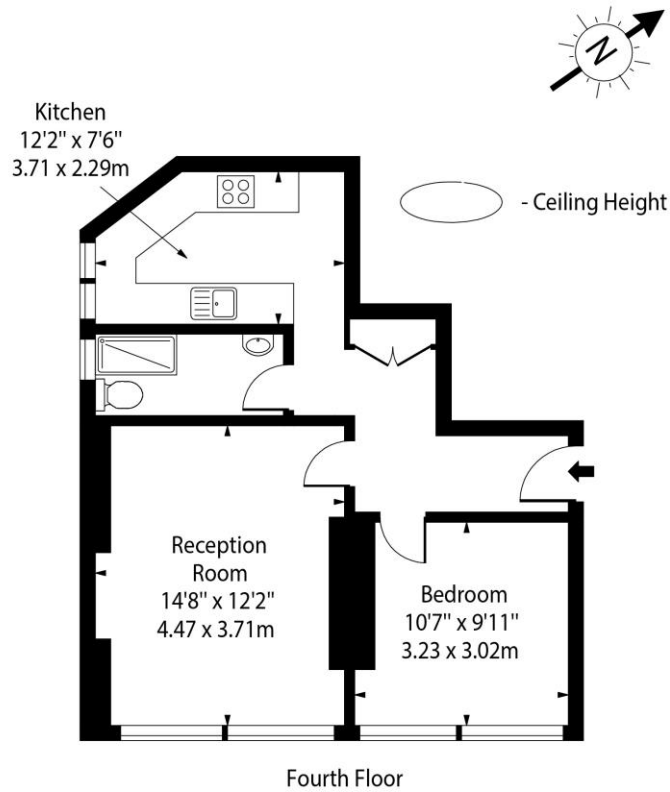
Please contact Winkworth, Chiswick for details of the service charge.

## **ACCOMMODATION**

Mansion Block Apartment  
One Double Bedroom  
Adjacent to Turnham Green  
Close to Tube and Train  
Share of Freehold  
No Onward Chain



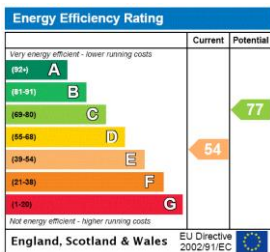
## Arlington Park Mansions w4



Approx Gross Internal Area 506 Sq Ft - 47.00 Sq M

This floor plan should be used as a general outline for guidance only and does not constitute in whole or in part an offer or contract. Any intending purchaser or lessee should satisfy themselves by inspection, searches, enquiries and full survey as to the correctness of each statement. Any areas, measurements or distances quoted are approximate and should not be used to value a property or be the basis of any sale or let.

This floorplan is for illustration purposes only and is not to scale. The position and size of doors, windows, appliances and other features are approximate.



Chiswick | 020 8994 7096 | [chiswick@winkworth.co.uk](mailto:chiswick@winkworth.co.uk)

# Winkworth

for every step...

[winkworth.co.uk](http://winkworth.co.uk)

Winkworth wishes to inform prospective buyers and tenants that these particulars are a guide and act as information only. All our details are given in good faith and believed to be correct at the time of printing but they don't form part of an offer or contract. No Winkworth employee has authority to make or give any representation or warranty in relation to this property. All fixtures and fittings, whether fitted or not are deemed removable by the vendor unless stated otherwise and room sizes are measured between internal wall surfaces, including furnishings.