



**CLIFTON COURT, NW8 £560,000 JOINT SOLE AGENT** Subject to contract

A spacious bright, well-proportioned one bedroom second floor apartment, forming part of this well-known sought-after purpose-built block, with wonderful communal gardens and a porter. The property is ready for immediate occupation and offers a wealth of natural light with views across landscaped communal gardens. Clifton Court is located on the borders of both Little Venice and St John's Wood, close to all the local amenities offered by both areas including boutiques shops, cafes, the famous Regents Canal (0.1 mile), Lord's Cricket Ground (0.7 miles) and the Underground at Warwick Avenue (Bakerloo line - 0.4 miles). The service charge includes communal heating and hot water.

Double Bedroom | Bathroom | Reception Room | Kitchen | Entrance Hall | Communal Gardens | Porterage | Communal Heating & Hot Water | Leasehold - 977 Years

[winkworth.co.uk/st-johns-wood](http://winkworth.co.uk/st-johns-wood)

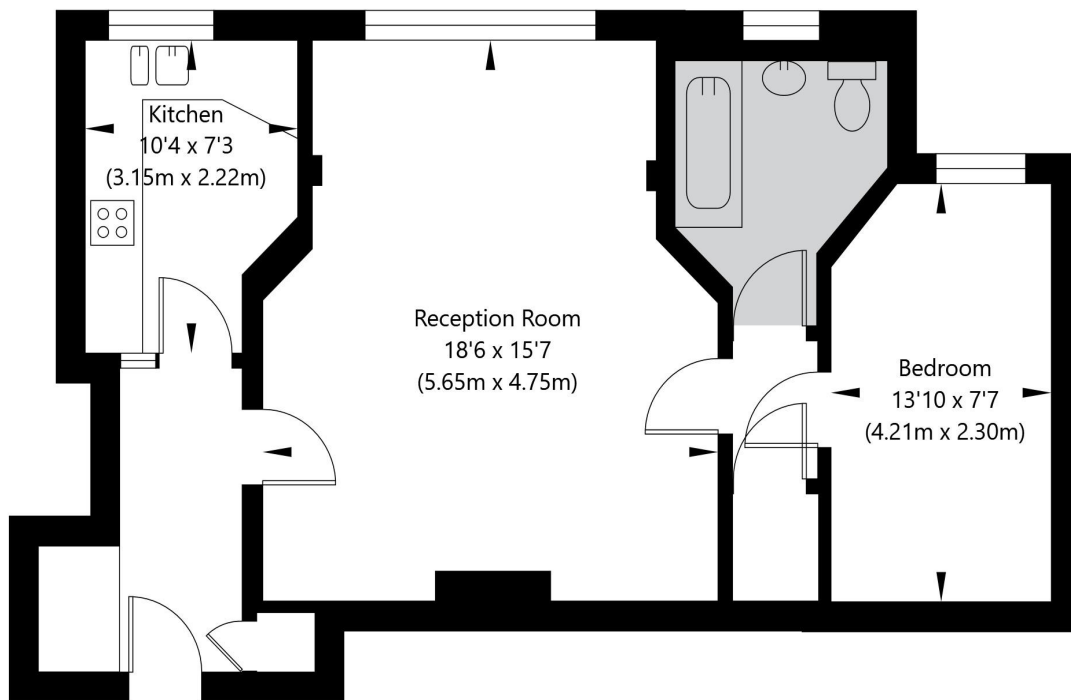
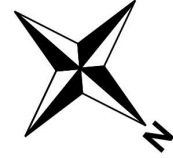
**Winkworth**

For every step...

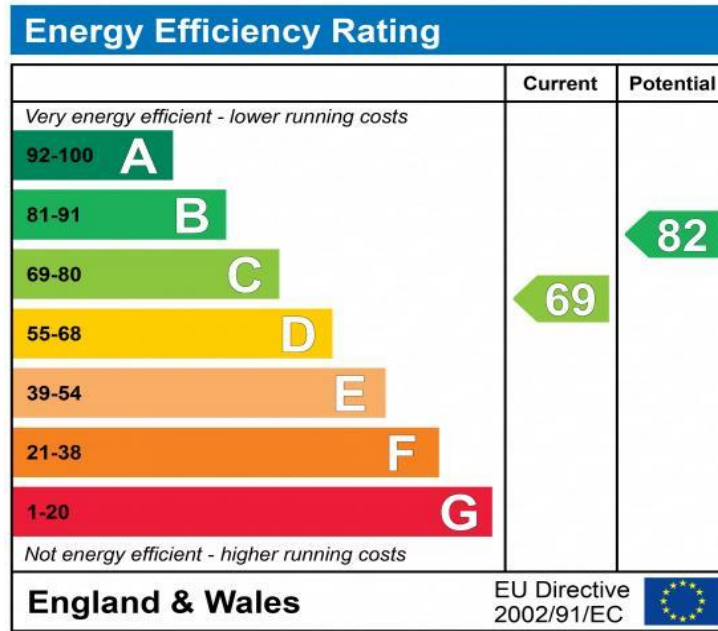


# Clifton Court, Northwick Terrace, London NW8 8JA

Second Floor  
GROSS INTERNAL FLOOR AREA  
APPROX. 56.09 SQ M / 604 SQ FT



APPROXIMATE GROSS INTERNAL FLOOR AREA 56.09 SQ M / 604 SQ FT  
THIS FLOOR PLAN IS FOR ILLUSTRATIVE PURPOSES ONLY AND  
SHOULD BE USED FOR THIS PURPOSE BY PROSPECTIVE APPLICANTS AS ITS NOT TO SCALE.



**Tenure:** Leasehold

**Term:** 999 years from 25/03/2001

**Service Charge:** £3,403.68 per annum

**Current Ground Rent:** A Peppercorn / No Ground Rent Applicable

**NOTES:** **The service charge includes communal heating and hot water.**

Where no figures are shown, we have been unable to ascertain the information. All figures that are shown were correct at the time of printing.

NB: These particulars are not an offer or contract, nor part of one. You should not rely on statements by Winkworth in the particulars or by word of mouth or in writing "information" as being factually accurate about the property, its condition or its value. Neither Winkworth nor any joint agent has any authority to make any representations about the property, and accordingly any information given is entirely without responsibility on the part of the agents, seller(s) or lessor(s). These particulars are prepared on the basis of the information supplied by our client and are a rough guide for information only. The photographs show only certain parts of the property. We are not able to check all of the information and therefore are unable to guarantee accuracy. All interested parties are therefore advised to undertake all necessary inspections and checks that they deem appropriate. Where displayed, the square footage is taken from the floor plans, which are created by an independent supplier. These measurements are approximate and included for illustrative purposes only. The measurements may vary. Winkworth does not make any representation as to the accuracy of these measurements and you should seek to verify them for yourself. Winkworth accept no liability for any loss you may suffer if you rely on these measurements. All fixtures and fittings, whether fitted or not are deemed removable by the vendor unless stated. Any reference to alterations to, or use of, any part of the property does not mean that any necessary planning, building regulations or other consent has been obtained. Amenities and appliances have not been tested.

St John's Wood | 103-104 St John's Wood Terrace, London NW8 6PL  
020 7586 7001 | [stjohnswood@winkworth.co.uk](mailto:stjohnswood@winkworth.co.uk)

[winkworth.co.uk/st-johns-wood](http://winkworth.co.uk/st-johns-wood)

**Winkworth**

See things differently.