



CHESTERTON ROAD, LONDON, W10
£2,600 PER MONTH FURNISHED, UNFURNISHED

**A SPACIOUS FIRST FLOOR TWO BEDROOM APARTMENT IN THE
HEART OF LADBROKE GROVE**

North Kensington | 020 7792 5000 | northkensington@winkworth.co.uk

Winkworth

for every step...

winkworth.co.uk



DESCRIPTION:

A spacious lateral first floor two bedroom apartment in this well maintained period building, which is ideally located in the heart of Ladbroke Grove Notting Hill.

The flat benefits from two spacious double bedrooms, large bright reception room, separate kitchen, wooden floors throughout. Located moments from Portobello Road and within walking distance of Ladbroke Grove Underground Station (Hammersmith & City & Circle lines).



Winkworth

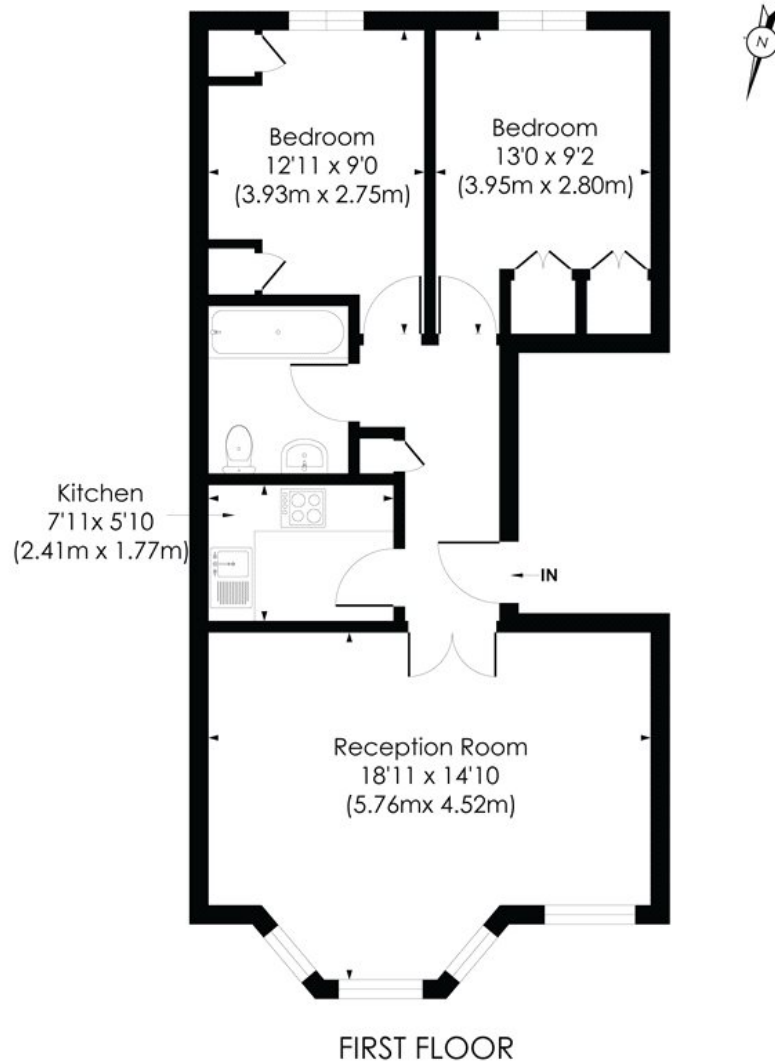
for every step...

Winkworth

for every step...

CHESTERTON ROAD, W10

Approx. Gross Internal Floor Area
648 Sq. ft/60.16 Sq. m



© Pixangle Property Marketing Ltd. Info@pixangle.com Tel: 0208 870 2118

pixangle
PROPERTY MARKETING

This floor plan has been prepared for the purpose of illustration only in accordance with the latest RICS code of measuring practice and is not to scale. All measurements and areas are approximate and whilst every effort has been made to ensure the accuracy of the plan contained here, no responsibility is taken for any error, omission or misstatement.

This floorplan is for illustration purposes only and is not to scale. The position and size of doors, windows, appliances and other features are approximate.

Energy Efficiency Rating		Current	Potential
Very energy efficient - lower running costs			
(92)	A		
(81-91)	B		
(69-80)	C	79	83
(55-68)	D		
(39-54)	E		
(21-38)	F		
(1-20)	G		
Not energy efficient - higher running costs			
England, Scotland & Wales		EU Directive 2002/91/EC	

North Kensington | 020 7792 5000 | northkensington@winkworth.co.uk



for every step...

winkworth.co.uk

Winkworth wishes to inform prospective buyers and tenants that these particulars are a guide and act as information only. All our details are given in good faith and believed to be correct at the time of printing but they don't form part of an offer or contract. No Winkworth employee has authority to make or give any representation or warranty in relation to this property. All fixtures and fittings, whether fitted or not are deemed removable by the vendor unless stated otherwise and room sizes are measured between internal wall surfaces, including furnishings.