



**INVERNESS TERRACE, BAYSWATER, W2**  
**£1,100,000 LEASEHOLD**

**ONLY MOMENTS FROM HYDE PARK AND KENSINGTON GARDENS, A RECENTLY REFURBISHED, STYLISHLY PRESENTED, TWO BEDROOM, TWO BATHROOM, SECOND FLOOR (WITH LIFT) APARTMENT, SET IN THIS HANDSOME GRADE II PERIOD BUILDING.**

Paddington | 020 7467 5770 | paddington@winkworth.co.uk

**Winkworth**

for every step...

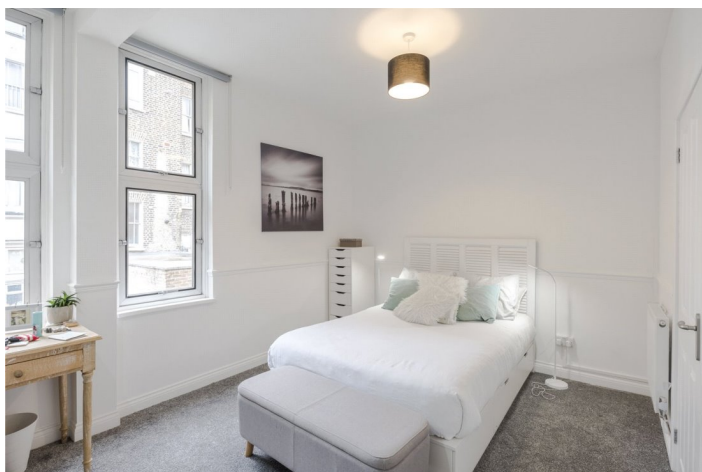
*winkworth.co.uk*



### DESCRIPTION:

Located on a stunning tree lined street - 'Inverness Terrace', in the heart of Bayswater, with easy access to both Bayswater St' (Hammersmith, Circle and District lines) and Queensway (Central line). Conveniently located for international and national transport links at Paddington Mainline Station (Heathrow Express / Elizabeth Line). Westbourne Grove is also within easy reach, as is Queensway, where the significant and world-class development 'The Whiteley' is currently under construction.

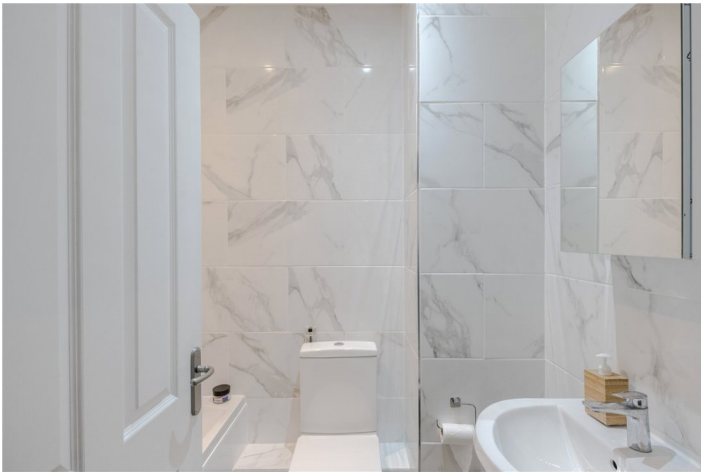
LEASE: ABOUT 949 YEARS REMAINING | SERVICE CHARGE - ABOUT £5,120 PER ANNUM | GROUND RENT - NIL PER ANNUM | COUNCIL TAX BAND: F



**Winkworth**

for every step...



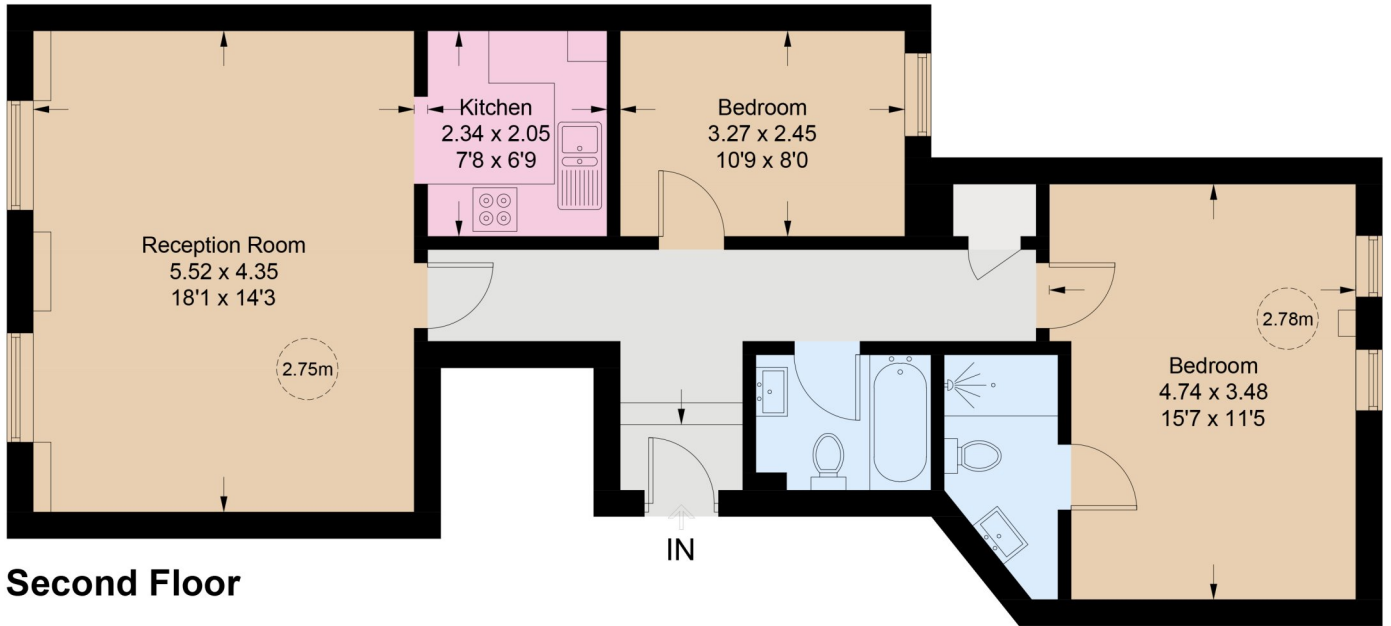


**Winkworth**

for every step...

# Inverness Terrace

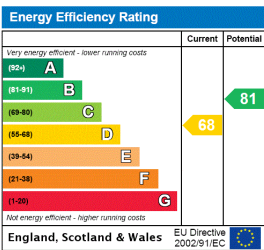
Approximate Gross Internal Area = 73.9 sq m / 795 sq ft



## Second Floor

Illustration for identification purposes only, measurements are approximate, not to scale. floorplansUsketch.com © (ID1019088)

This floorplan is for illustration purposes only and is not to scale. The position and size of doors, windows, appliances and other features are approximate.



Paddington | 020 7467 5770 | paddington@winkworth.co.uk



for every step...

winkworth.co.uk

Winkworth wishes to inform prospective buyers and tenants that these particulars are a guide and act as information only. All our details are given in good faith and believed to be correct at the time of printing but they don't form part of an offer or contract. No Winkworth employee has authority to make or give any representation or warranty in relation to this property. All fixtures and fittings, whether fitted or not are deemed removable by the vendor unless stated otherwise and room sizes are measured between internal wall surfaces, including furnishings.