



WELBECK CLOSE, HERTFORDSHIRE, WD6  
**£410,000 FREEHOLD**

## THREE BEDROOM FAMILY HOUSE WITHIN EASY ACCESS OF BOREHAMWOOD HIGH STREET

Borehamwood | 020 8953 8899 | borehamwood@winkworth.co.uk





### DESCRIPTION:

Located in a quiet, highly desirable and sought after cul de sac, approx. 0.5miles walk from Borehamwood High Street and Thameslink station and a short walk from Borehamwood & Elstree Synagogue is this three bedroom family house.

In need of some updating, which has been reflected in the asking price, the property provides in excess of 900 square feet of family accommodation whilst still offering scope to extend and reconfigure to suit your individual needs, subject to the usual planning consents.

### AT A GLANCE

- 3 Bedrooms
- Double Reception
- Gas Central Heating
- Double Glazed
- 908 Square Feet
- Sought After Location







Approximate Gross Internal Area = 84.4 sq m / 908 sq ft

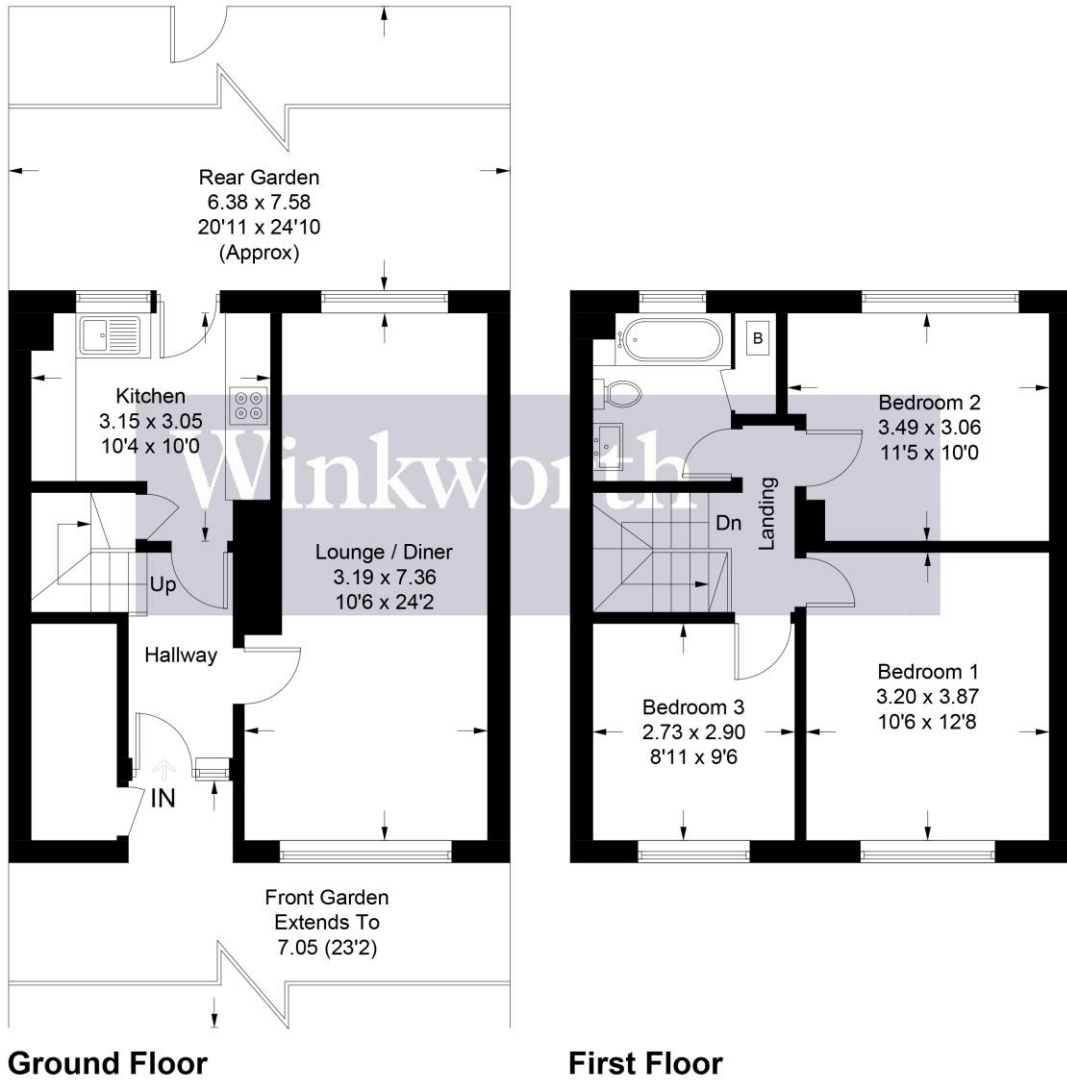


Illustration for identification purposes only, measurements are approximate, not to scale. Winkworth © 2024 (ID1036298)

This floorplan is for illustration purposes only and is not to scale. The position and size of doors, windows, appliances and other features are approximate.