

Wilkinson Street, London, SW8

£1,325,000 Freehold

Winkworth are proud to present this charming four-bedroom Victorian Terraced house on a quiet residential street set within the Albert Square conservation area.

LOCATION

The house is on Wilkinson Street which is located between Clapham Road and South Lambeth Road. Nearby, in the surrounding areas there are an abundance of amenities such as shops, cafés and pubs including the charming Canton Arms.

DESCRIPTION

As you enter the house on the ground floor you are greeted by a spacious hallway with high ceilings. On your right is a large double reception room with high ceilings, original cornicing, wooden shutters, wooden flooring and two fireplaces, offering an abundance of living space. This room has ample natural light owing to two large sash windows, both double glazed. These rooms can be separated by double wooden doors between.

Towards the rear of the house is a separate dining room that leads onto the kitchen. There is ample space for a large dining table and chairs. The kitchen is finished with smart white gloss cabinets offering an abundance of storage and worktop space, as well as space for a gas oven with hob, dishwasher, washing machine, and fridge freezer. From the kitchen there are double doors leading out onto the 47ft garden, offering so much potential for alfresco dining, entertaining, or for any keen gardeners.

The first floor comprises two large double bedrooms, a great sized family bathroom, and a separate W.C.

The family bathroom contains a bath with overhead shower, sink with mirror above, and built-in storage.

The second floor comprises two further bedrooms. All four bedrooms in the property have plenty of space for double beds as well as ample free-standing storage.

LOCAL AUTHORITY

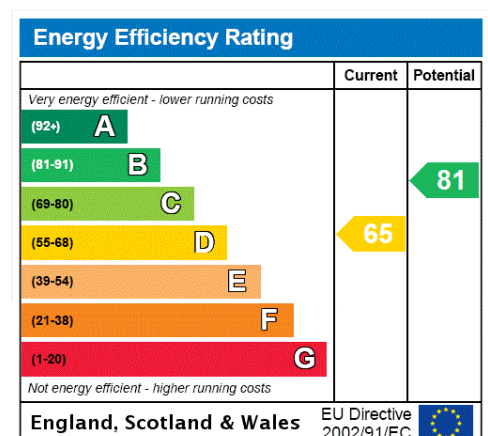
Lambeth Council.

TENURE

Freehold.

DIRECTIONS

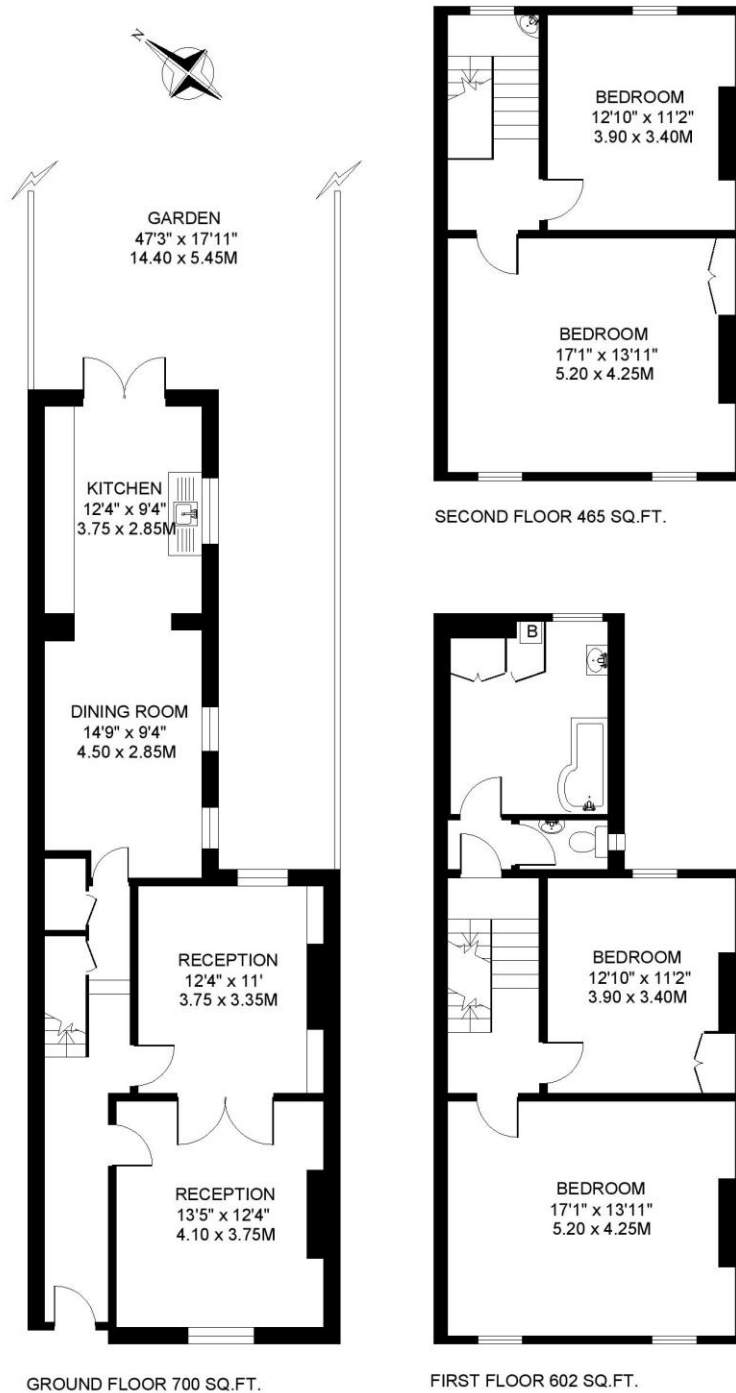
Stockwell Station (Victoria & Northern Line) is approximately 700m away. Oval Station (Northern Line) is approximately 860m away. Both Clapham Road and South Lambeth Road are well served by frequent bus service into Central London.





WILKINSON STREET SW8
4 BEDROOM HOUSE

Approximate gross floor area
1767 SQ.FT. / 164.2 SQ.M.



This floorplan is for illustration purposes only and is not to scale. The position and size of doors, windows, appliances and other features are approximate.

Copyright: These plans should not be reproduced by any other person, without permission.
Floorplan produced for Winkworth by Floorplanners 07801 228850

Kennington | 020 7587 0600 | kennington@winkworth.co.uk