



CHISWICK HIGH ROAD, CHISWICK, LONDON, W4  
**£2,600 PER MONTH FURNISHED**

**NEW INSTRUCTION\* A MUCH LARGER THAN  
AVERAGE TWO-BEDROOM, TWO-BATHROOM  
APARTMENT.**

Chiswick | 020 8994 7096 | [chiswick@winkworth.co.uk](mailto:chiswick@winkworth.co.uk)

**Winkworth**

for every step...

[winkworth.co.uk](http://winkworth.co.uk)



## DESCRIPTION:

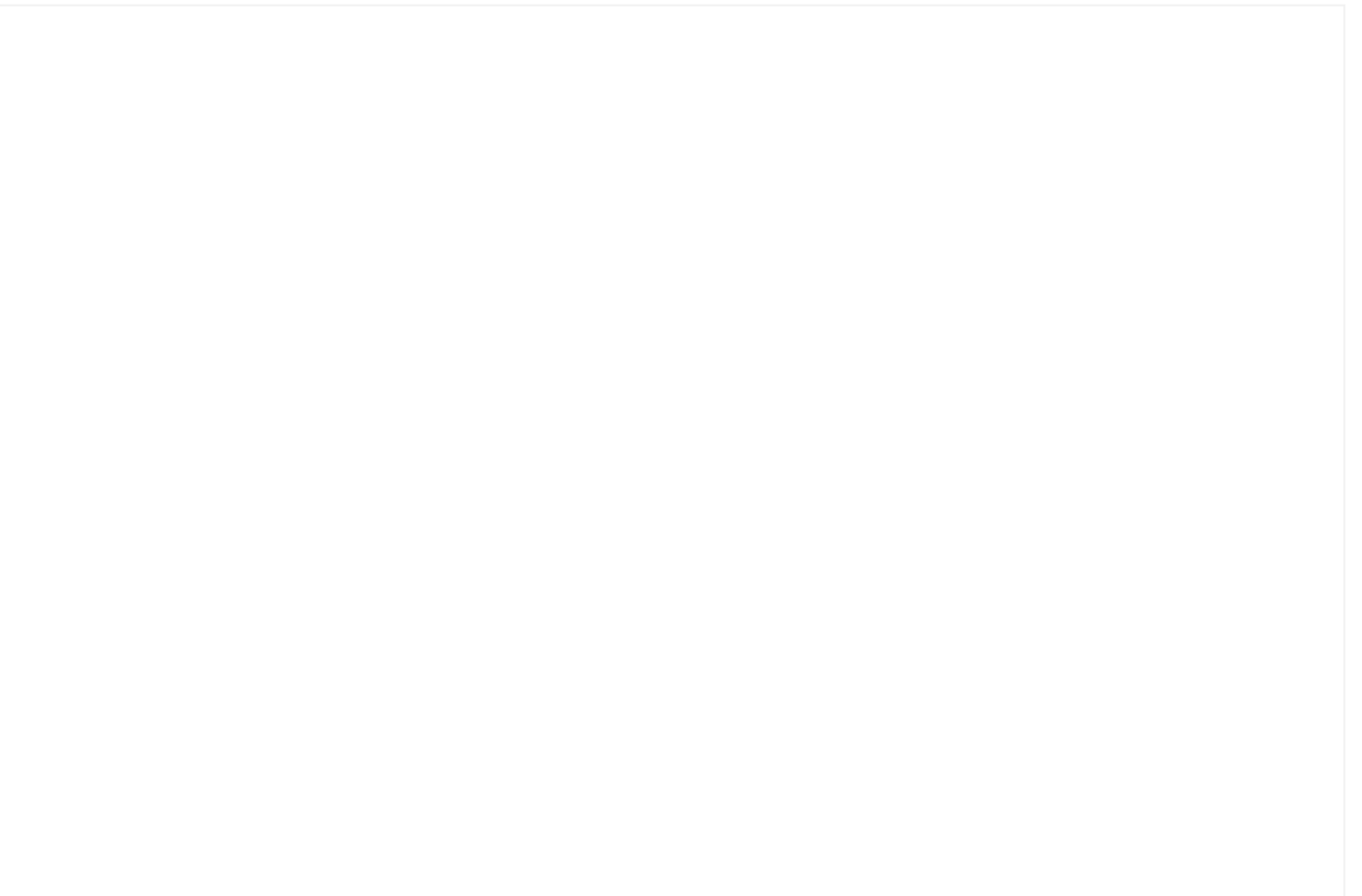
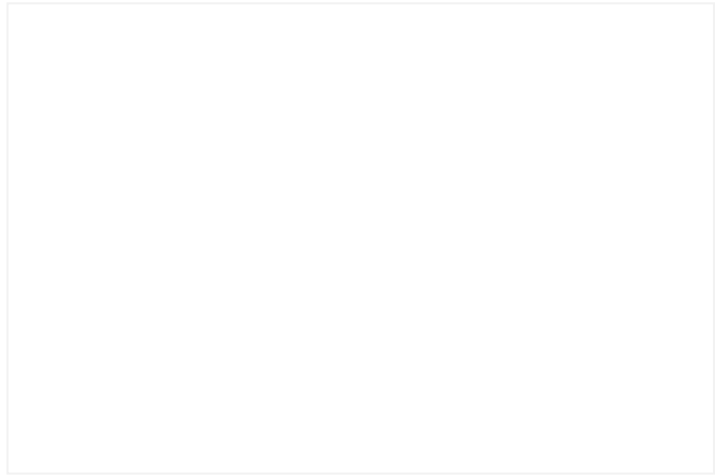
New Instruction\* Council Tax Band: F

A stunning larger than average two-bedroom, two-bathroom apartment in this convenient location on Chiswick High Road. This 1000 sq ft plus property is presented in a modern and contemporary style, and benefits from an open plan kitchen, living and dining area, two double bedrooms one with en-suite bathroom, second shower room with WC, utility room and spacious hallway with ample storage. The property further benefits from secure underground parking and two balconies.

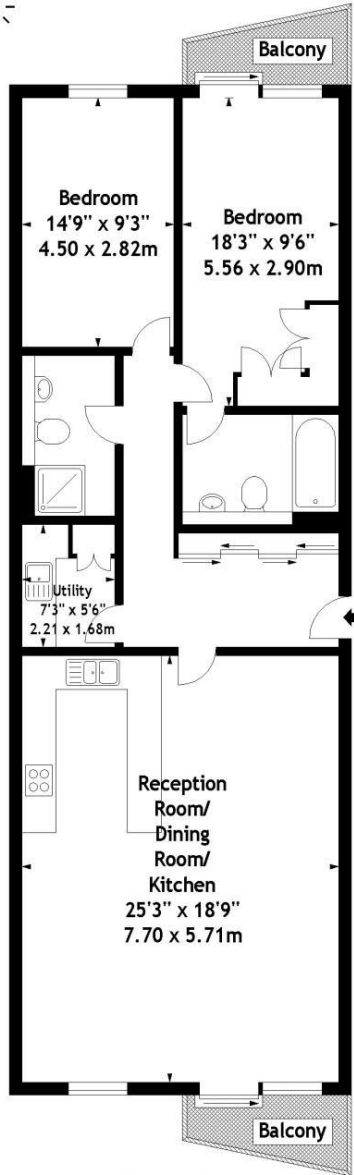
Situated on the High Road the property is conveniently positioned, offering a vast range of local amenities, delightful green spaces, and attractive parks. Transport links include various nearby bus routes and close proximity to Gunnersbury (District Line) station.

## ACCOMMODATION

2 Bedrooms,  
1 Reception Room,  
2 Bathrooms, Flat/Apartment,  
Upper Floor with Lift, Balcony,  
Off Street Parking,  
Furnished



Chiswick High Road, W4  
 Approx. Gross Internal Area  
 1092 Sq Ft - 101.45 Sq M



Second Floor

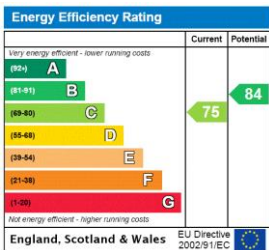
Measured in accordance with RICS guidelines. Every attempt is made to ensure accuracy, however all measurements are approximate. This floor plan is for illustrative purposes only and is not to scale.  
 © Luke Casserly Photography 2009

This floorplan is for illustration purposes only and is not to scale. The position and size of doors, windows, appliances and other features are approximate.

**Deposit:** £3,000.00

**Council Tax Band:**

Where no figures are shown, we have been unable to ascertain the information. All figures that are shown were correct at the time of printing.



Chiswick | 020 8994 7096 | chiswick@winkworth.co.uk



for every step...

winkworth.co.uk

Winkworth wishes to inform prospective buyers and tenants that these particulars are a guide and act as information only. All our details are given in good faith and believed to be correct at the time of printing but they don't form part of an offer or contract. No Winkworth employee has authority to make or give any representation or warranty in relation to this property. All fixtures and fittings, whether fitted or not are deemed removable by the vendor unless stated otherwise and room sizes are measured between internal wall surfaces, including furnishings.