



HARROW ROAD, W10
£625,000 LEASEHOLD

A FANTASTIC TWO BEDROOM FLAT WITH A SIZABLE SOUTH FACING ROOF TERRACE

North Kensington | 020 7792 5000 | northkensington@winkworth.co.uk

Winkworth

for every step...

winkworth.co.uk



DESCRIPTION:

A fantastic, bright and spacious apartment set within luxury development on the Grand Union Canal. Set on the first floor, the property comprises a light and spacious fully fitted open plan kitchen reception room with modern fixtures and fittings, high spec bathroom, two good size double bedrooms and an en suite shower room. The flat also offers under floor heating, wooden floors throughout and a fantastic large south facing roof terrace overlooking the canal.

This stunning development is ideally located for Kensal Rise, Kensal Green, Ladbroke Grove and Notting Hill and within close proximity to underground and major bus routes.

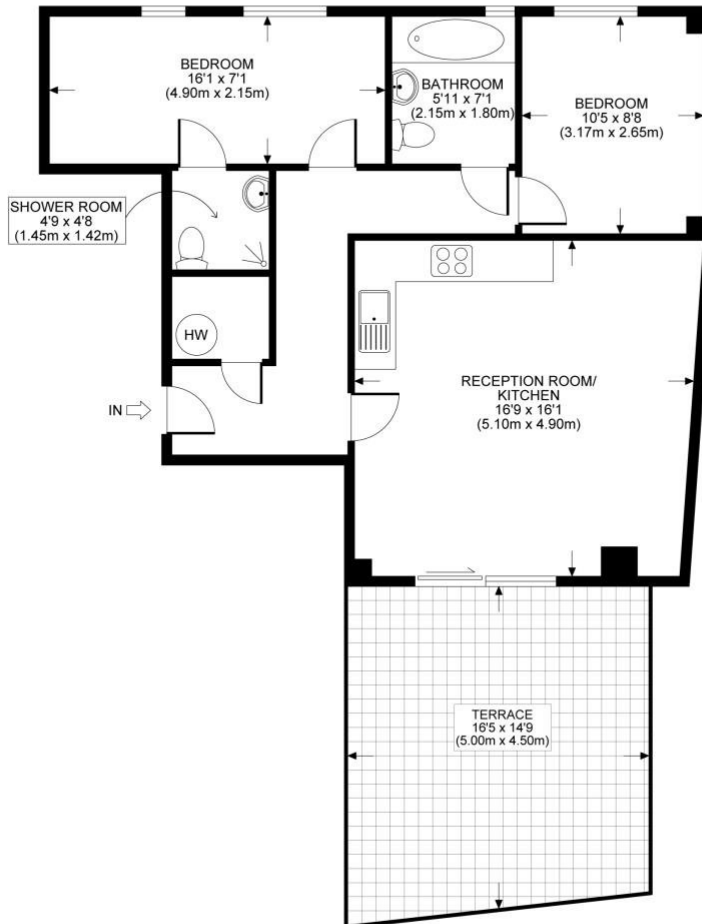
AT A GLANCE

- Two Double Bedrooms
- Two Bathrooms (one en-suite)
- Very Large South Facing Roof Terrace
- Canal Facing
- Wooden Floors Throughout
- Fully Integrated Kitchen
- Open-plan Kitchen/Reception Room





HARROW ROAD, W10
 TOTAL APPROX. FLOOR PLAN AREA 665 SQ.FT. (62 SQ.M.)
 FIRST FLOOR



This floorplan is for illustration purposes only and is not to scale. The position and size of doors, windows, appliances and other features are approximate.

Energy Efficiency Rating		Current	Potential
Very energy efficient - lower running costs			
(92-100) A			
(81-91) B			
(69-80) C			
(55-68) D			
(39-54) E			
(21-38) F			
(1-20) G			
Not energy efficient - higher running costs			
England, Scotland & Wales		79	79
EU Directive 2002/91/EC			

Environmental Impact (CO ₂) Rating		Current	Potential
Very environmentally friendly - lower CO ₂ emissions			
(92-100) A			
(81-91) B			
(69-80) C			
(55-68) D			
(39-54) E			
(21-38) F			
(1-20) G			
Not environmentally friendly - higher CO ₂ emissions			
England, Scotland & Wales		81	81
EU Directive 2002/91/EC			

Tenure: Leasehold

Term: 114 year and 8 months expires 01/01/2139

Service Charge: £3,045.00 per annum

Ground Rent: £ 450 Annually

Council Tax Band: Westminster Band D

Where no figures are shown, we have been unable to ascertain the information. All figures that are shown were correct at the time of printing.

North Kensington | 020 7792 5000 | northkensington@winkworth.co.uk