



NOTTING BARN ROAD, W10
OFFERS OVER £675,000 FREEHOLD

A BRILLIANT THREE DOUBLE BEDROOM FREEHOLD HOUSE WITH SIZABLE GARDEN

North Kensington | 020 7792 5000 | northkensington@winkworth.co.uk

Winkworth

for every step...

winkworth.co.uk



DESCRIPTION:

This spacious freehold three bedroom town house is located just moments from the wonders of Portobello Market and Golborne Road. The terrace house is laid out over three storeys. The ground floor includes a WC, large fully fitted eat-in kitchen which leads out to a large living room, and private patio garden. On the first floor there are two double bedrooms and family bathroom. The top floor comprises of one further double bedroom and a large loft space, ideal for storing suitcases and boxes. The house feels incredibly light throughout and would make an ideal family home or investment.

Notting Barn Road is situated just off Barlby Road. Transport links can be found close by at Ladbroke Grove (Hammersmith & City line towards Paddington and Liverpool Street station) and Kensal Green (Bakerloo line) underground stations, as well as a variety of shops, cafes and restaurants on Golborne Road, Portobello Road and Chamberlayne Road.

AT A GLANCE

- Freehold House
- Three Double Bedrooms
- South Facing Private Garden
- Large Loft Space
- Eat-in Kitchen
- Service Charges Approx £1000pa
- Unmodernised
- EPC Rating C
- Potential to add another Bathroom

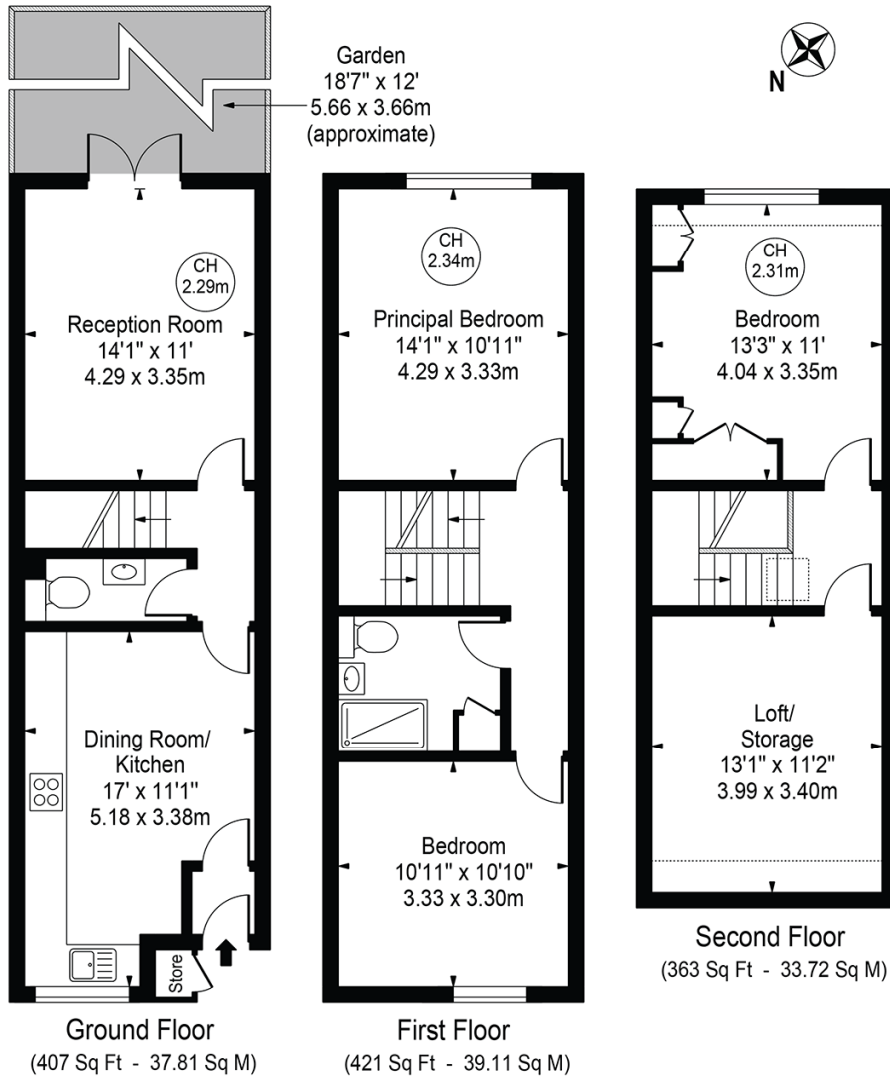




Notting Barn Road

Approx. Gross Internal Area 1191 Sq Ft - 110.65 Sq M
(Including Restricted Height Area & Excluding Store)

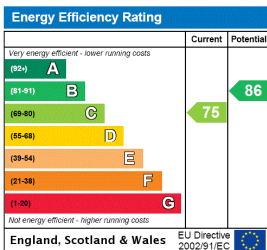
Approx. Gross Internal Area 1164 Sq Ft - 108.14 Sq M
(Excluding Restricted Height Area & Store)



For Illustration Purposes Only - Not To Scale

This floor plan should be used as a general outline for guidance only and does not constitute in whole or in part an offer or contract. Any intending purchaser or lessee should satisfy themselves by inspection, searches, enquiries and full survey as to the correctness of each statement. Any areas, measurements or distances quoted are approximate and should not be used to value a property or be the basis of any sale or let. Copyright Morriarti Photography & Design LTD

This floorplan is for illustration purposes only and is not to scale. The position and size of doors, windows, appliances and other features are approximate.



North Kensington | 020 7792 5000 | northkensington@winkworth.co.uk



for every step...

winkworth.co.uk

Winkworth wishes to inform prospective buyers and tenants that these particulars are a guide and act as information only. All our details are given in good faith and believed to be correct at the time of printing but they don't form part of an offer or contract. No Winkworth employee has authority to make or give any representation or warranty in relation to this property. All fixtures and fittings, whether fitted or not are deemed removable by the vendor unless stated otherwise and room sizes are measured between internal wall surfaces, including furnishings.