

SANDRINGHAM COURT, W9 £750,000 LEASEHOLD

Development Opportunity 2 x 2 Bedroom Units! Winkworth are excited to offer a fabulous development opportunity within the well-known and sought-after purpose built block, Sandringham Court. Offered for sale together are two lower ground floor, unmodernised units with substantial development potential. There is currently planning permission in place to transform each of these units into two luxury, two bedroom, two bathroom apartments with direct access to communal gardens. Though the planning application was granted in 2019, excavation works were initiated meaning the application is still valid.

You can find the details for the permitted planning application, alongside the proposed floorplans on the Westminster Planning Website under planning reference number 19/03310/FULL.

Development Opportunity | Direct Access To Communal Gardens | Porterage | Close To Local Amenities | Passenger Lift

Winkworth

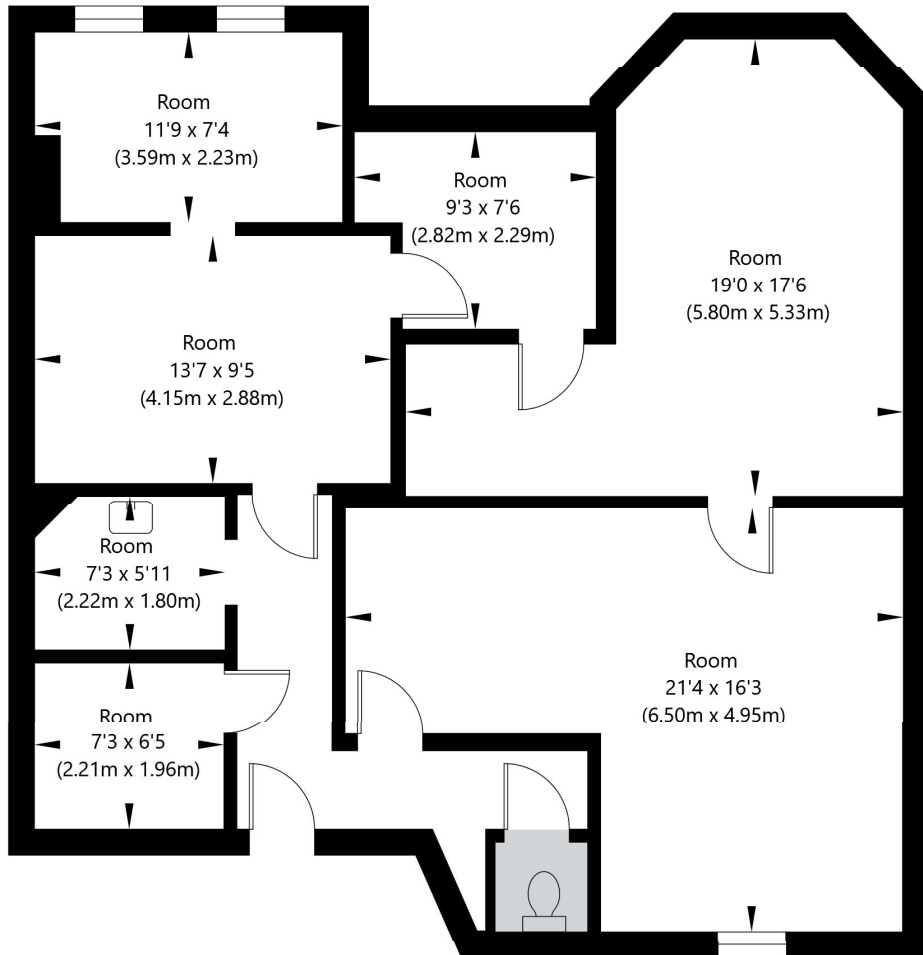
for every step...

winkworth.co.uk/maida-vale



Sandringham Court, Maida Vale, W9 1UA

Lower Ground Floor
GROSS INTERNAL FLOOR AREA
APPROX. 95.82 SQ M / 1031 SQ FT



APPROXIMATE GROSS INTERNAL FLOOR AREA 95.82 SQ M / 1031 SQ FT
THIS FLOOR PLAN IS FOR ILLUSTRATIVE PURPOSES ONLY AND
SHOULD BE USED FOR THIS PURPOSE BY PROSPECTIVE APPLICANTS AS ITS NOT TO SCALE.

(c) AMBERSHORE PIX LIMITED / PHOTO - VIDEO - FLOOR PLANS / 0800 999 1577 / WWW.AMERSHOREPIX.CO.UK



Tenure: Leasehold
Term: Expires - 01/01/3022
Service Charge: TBC
Ground Rent: TBC
Council Tax Band: G

Where no figures are shown, we have been unable to ascertain the information. All figures that are shown were correct at the time of printing.

Where no figures are shown, we have been unable to ascertain the information. All figures that are shown were correct at the time of printing. These particulars are not an offer or contract, nor part of one. You should not rely on statements by Winkworth in the particulars or by word of mouth or in writing "information" as being factually accurate about the property, its condition or its value. Winkworth does not have any authority to make any representations about the property, and accordingly any information given is entirely without responsibility on the part of the agents, seller(s) or lessor(s). These particulars are prepared on the basis of the information supplied by our client and are a rough guide for information only. The photographs show only certain parts of the property. We are not able to check all of the information and therefore are unable to guarantee accuracy. All interested parties are therefore advised to undertake all necessary inspections and checks that they deem appropriate. Where displayed, the square footage is taken from the floor plans, which are created by an independent supplier. These measurements are approximate and included for illustrative purposes only. The measurements may vary. Winkworth does not make any representation as to the accuracy of these measurements and you should seek to verify them for yourself. Winkworth accept no liability for any loss you may suffer if you rely on these measurements. All fixtures and fittings, whether fitted or not are deemed removable by the vendor unless stated. Any reference to alterations to, or use of, any part of the property does not mean that any necessary planning, building regulations or other consent has been obtained. Amenities and appliances have not been tested

Maida Vale | 211-213 Sutherland Avenue, London, W9 1RU | 020 7289 1692



for every step...

winkworth.co.uk/maida-vale

Winkworth wishes to inform prospective buyers and tenants that these particulars are a guide and act as information only. All our details are given in good faith and believed to be correct at the time of printing but they don't form part of an offer or contract. No Winkworth employee has authority to make or give any representation or warranty in relation to this property. All fixtures and fittings, whether fitted or not are deemed removable by the vendor unless stated otherwise and room sizes are measured between internal wall surfaces, including furnishings.