



CHISWICK HIGH ROAD, CHISWICK, LONDON, W4
£685,000 TO BE ADVISED

A LARGE TWO BEDROOM, TWO BATHROOM APARTMENT WITH PARKING

Chiswick | 020 8994 7096 | chiswick@winkworth.co.uk

Winkworth

for every step...

winkworth.co.uk

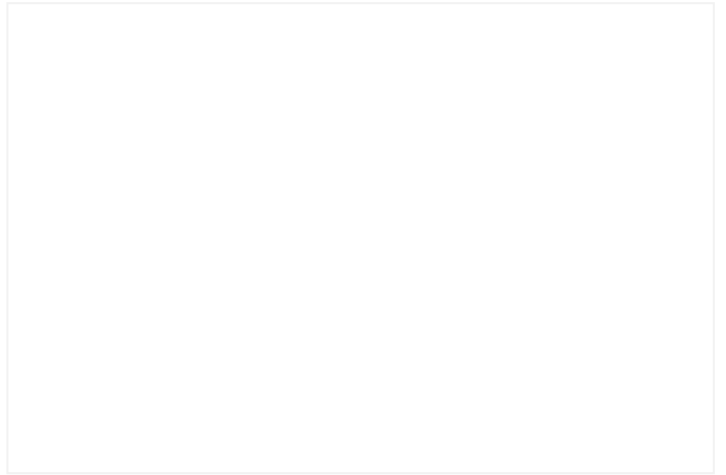


DESCRIPTION:

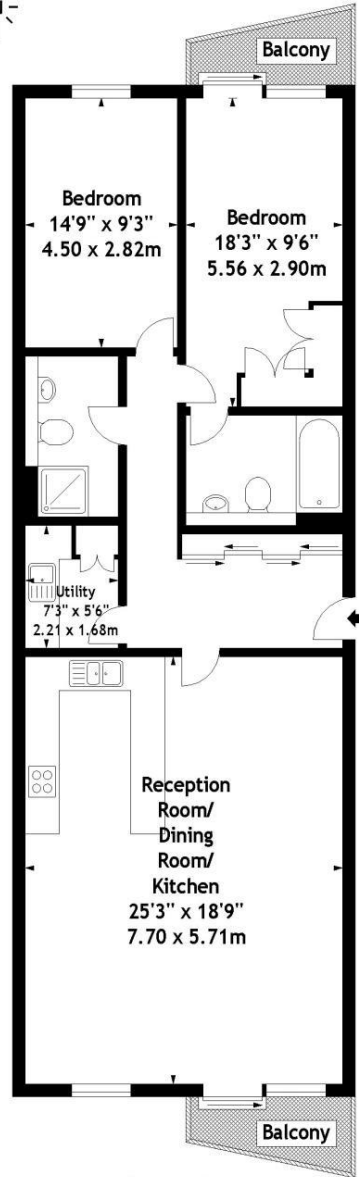
A large two double bedroom, two bathroom purpose built apartment ideally positioned for the amenities of Chiswick High Road. Moments from Gunnersbury over ground and Tube station (Zone 2).No Onward Chain.

ACCOMMODATION

2 Bedrooms,
1 Reception Room,
2 Bathrooms
Upper Floor with Lift,
Balcony,
Utility room,
Off Street Parking,



Chiswick High Road, W4
 Approx. Gross Internal Area
 1092 Sq Ft - 101.45 Sq M



Second Floor

Measured in accordance with RICS guidelines. Every attempt is made to ensure accuracy, however all measurements are approximate. This floor plan is for illustrative purposes only and is not to scale.
 © Luke Casserly Photography 2009

This floorplan is for illustration purposes only and is not to scale. The position and size of doors, windows, appliances and other features are approximate.

Energy Efficiency Rating		Current	Potential
Very energy efficient - lower running costs			
(92-100)	A		
(81-91)	B		
(69-80)	C		
(54-68)	D		
(39-54)	E		
(21-38)	F		
(1-20)	G		
Not energy efficient - higher running costs			
England, Scotland & Wales		75	84
EU Directive 2002/91/EC			

Chiswick | 020 8994 7096 | chiswick@winkworth.co.uk



for every step...

winkworth.co.uk

Winkworth wishes to inform prospective buyers and tenants that these particulars are a guide and act as information only. All our details are given in good faith and believed to be correct at the time of printing but they don't form part of an offer or contract. No Winkworth employee has authority to make or give any representation or warranty in relation to this property. All fixtures and fittings, whether fitted or not are deemed removable by the vendor unless stated otherwise and room sizes are measured between internal wall surfaces, including furnishings.