



PECKETT SQUARE, HIGHBURY, N5
£375,000 LEASEHOLD

A DELIGHTFUL ONE BEDROOM TOP FLOOR APARTMENT IN THE HEART OF HIGHBURY

Islington | 0207 354 2480 | islington@winkworth.co.uk



DESCRIPTION:

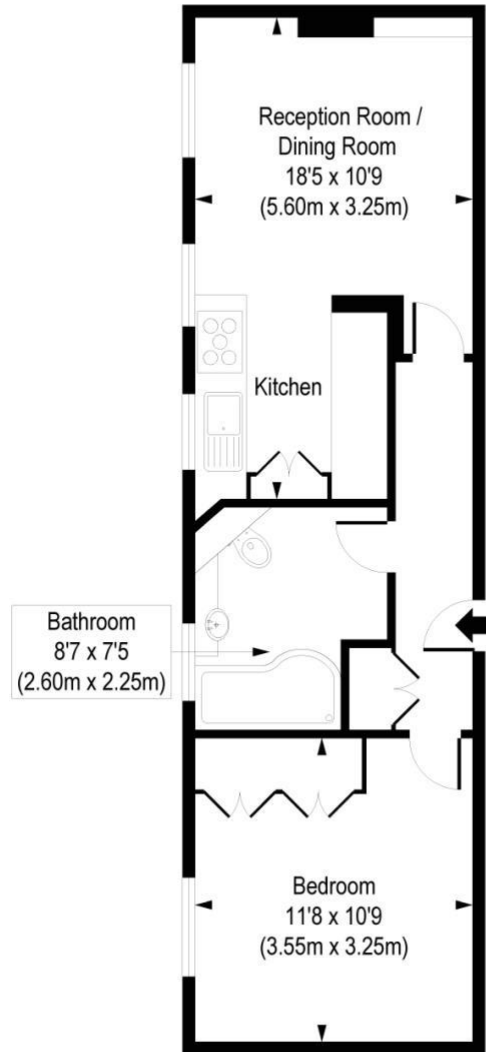
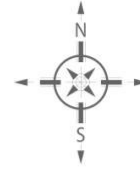
A modern one bedroom top floor flat set in an attractive red brick mansion block on Highbury Grange. The property offers a spacious reception room, with kitchen recessed to the side offering the perfect entertaining space. There is a generous double bedroom and well-proportioned bathroom. The property further benefits from an abundance of natural light and is offered to the market chain free.

Peckett Square is set just moments from the entrance to the green spaces of Highbury Fields and the prestigious Highbury Barn. The property is close to highly renowned local amenities, including Godfreys butchers, La Fromagerie, Da Mario's Deli, Bournes Fishmongers and Highbury Vintners all of which are hugely popular with locals as well as drawing those from further afield. Transport links are well serviced by Highbury & Islington station (Victoria and East London lines and Overground direct to the City) along with Arsenal underground station (Piccadilly line) both of which are only a short distance away. A wide selection of good bus routes are also on the doorstep.



Peckett Square, N5

Approx. Gross Internal Area 419 sq. ft / 38.94 sq. m



Third Floor

COMPLIANT WITH RICS CODE OF MEASURING PRACTICE Floorplan is for illustrative purposes only and is not to scale. Every attempt has been made to ensure the accuracy of the floorplan shown, however all measurements, fixtures, fittings and data shown are an approximate interpretation for illustrative purposes only. Liability for errors, omissions or mis-statement through negligence or otherwise is hereby excluded.

This floorplan is for illustration purposes only and is not to scale. The position and size of doors, windows, appliances and other features are approximate.