

LYNCROFT MANSIONS, LONDON, NW6 GUIDE PRICE **£899,950** SHARE OF FREEHOLD

A beautifully interior designed two-bedroom, two-bathroom second floor apartment set within one of West Hampstead's most desirable mansions blocks. The property has been finished to the highest of standard and offers a 19' reception room with fire place, exposed brick work and triple aspect windows along with two double bedrooms, two bathrooms (one en-suite) and fully fitted bespoke kitchen designed and built in the Cotswolds which leads on to the dining area where you will find views of the communal gardens along with a storage unit outside of the property. In 2019 the property was featured in the Times and Financial Times House and Home magazine. Lyncroft Gardens is conveniently located for the Thameslink, Overground and West Hampstead Jubilee Line Underground Stations all being within 0.2m of the property.

Two Bedrooms | Two Bathrooms (One En-Suite) | Fully Fitted Kitchen | Dining Area | Communal Gardens

Winkworth

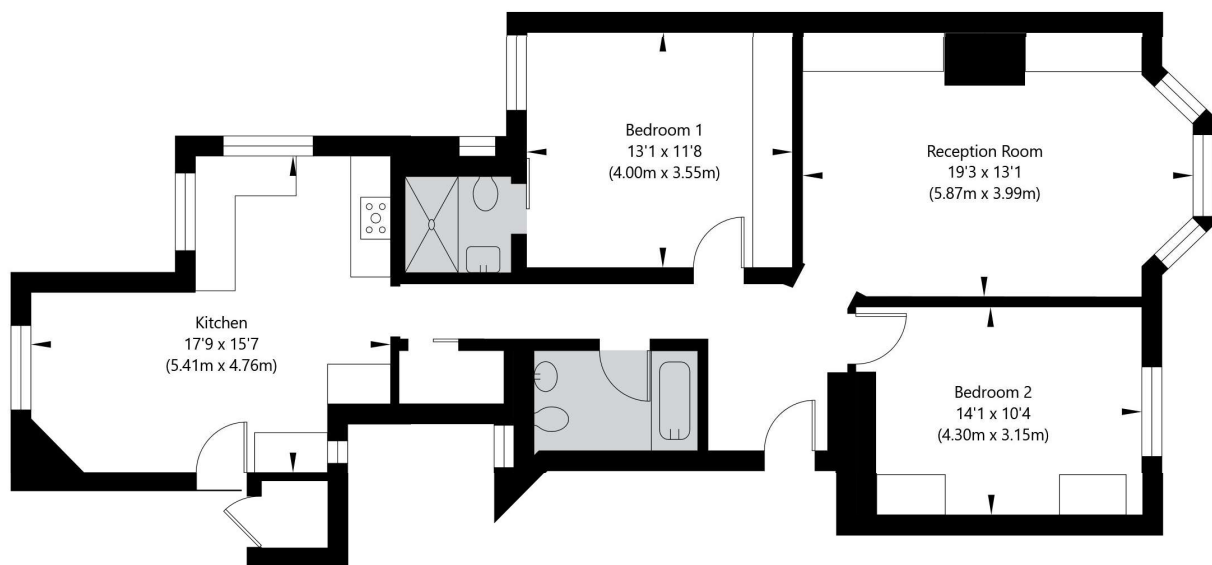
for every step...

[winkworth.co.uk/west-hampstead](https://www.winkworth.co.uk/west-hampstead)



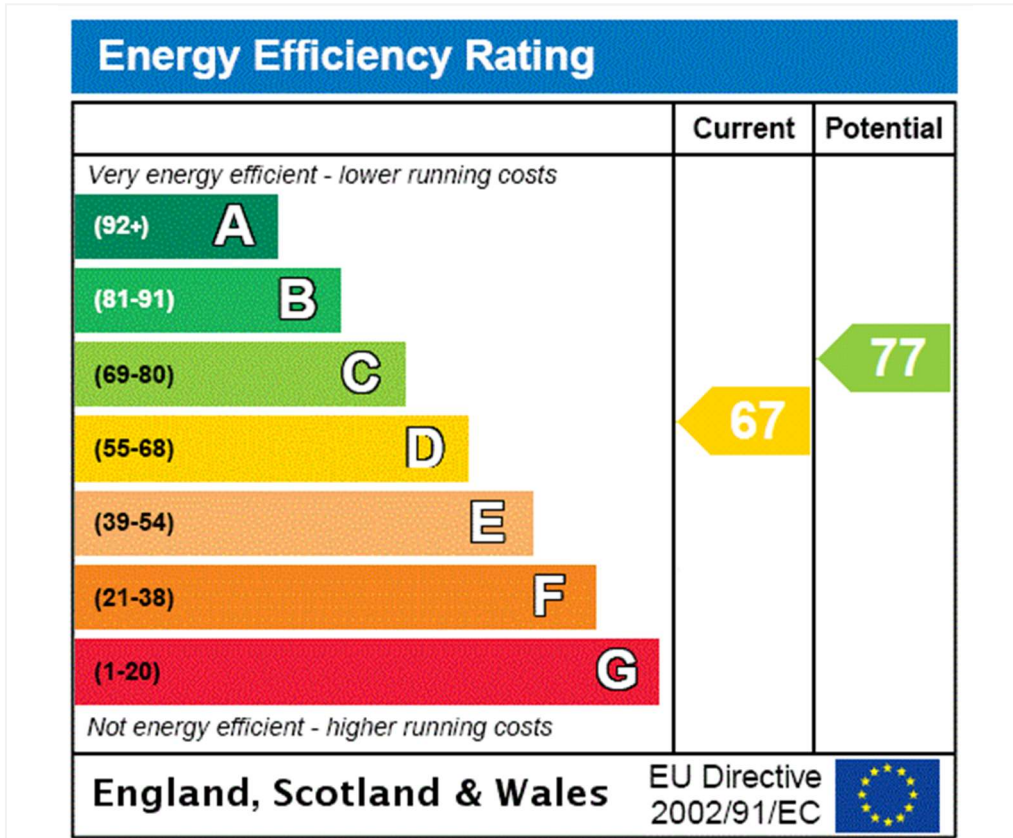
Lyncroft Mansions, Lyncroft Gardens, London, NW6 1JX

Second Floor
GROSS INTERNAL FLOOR AREA
APPROX. 94.3 SQ M / 1015 SQ FT



APPROXIMATE GROSS INTERNAL FLOOR AREA 94.3 SQ M 1015 SQ FT
THIS FLOOR PLAN IS FOR ILLUSTRATIVE PURPOSES ONLY AND
SHOULD BE USED FOR THIS PURPOSE BY PROSPECTIVE APPLICANTS AS ITS NOT TO SCALE.

(c) AMBERSHORE PIX LIMITED / PHOTO - VIDEO - FLOOR PLANS / 0800 999 1577 / WWW.AMERSHOREPIX.CO.UK



Tenure: Share of Freehold

Term: Expires - 26/11/2995

Service Charge: £5806.98 per annum

Ground Rent: A peppercorn

Council Tax Band: E

Where no figures are shown, we have been unable to ascertain the information. All figures that are shown were correct at the time of printing.

Where no figures are shown, we have been unable to ascertain the information. All figures that are shown were correct at the time of printing. These particulars are not an offer or contract, nor part of one. You should not rely on statements by Winkworth in the particulars or by word of mouth or in writing "information" as being factually accurate about the property, its condition or its value. Winkworth does not have any authority to make any representations about the property, and accordingly any information given is entirely without responsibility on the part of the agents, seller(s) or lessor(s). These particulars are prepared on the basis of the information supplied by our client and are a rough guide for information only. The photographs show only certain parts of the property. We are not able to check all of the information and therefore are unable to guarantee accuracy. All interested parties are therefore advised to undertake all necessary inspections and checks that they deem appropriate. Where displayed, the square footage is taken from the floor plans, which are created by an independent supplier. These measurements are approximate and included for illustrative purposes only. The measurements may vary. Winkworth does not make any representation as to the accuracy of these measurements and you should seek to verify them for yourself. Winkworth accept no liability for any loss you may suffer if you rely on these measurements. All fixtures and fittings, whether fitted or not are deemed removable by the vendor unless stated. Any reference to alterations to, or use of, any part of the property does not mean that any necessary planning, building regulations or other consent has been obtained. Amenities and appliances have not been tested



West Hampstead | 142 West End Lane, London, NW6 1SD | 020 7483 7602 | westhampstead@winkworth.co.uk

for every step...

winkworth.co.uk/west-hampstead

Winkworth wishes to inform prospective buyers and tenants that these particulars are a guide and act as information only. All our details are given in good faith and believed to be correct at the time of printing but they don't form part of an offer or contract. No Winkworth employee has authority to make or give any representation or warranty in relation to this property. All fixtures and fittings, whether fitted or not are deemed removable by the vendor unless stated otherwise and room sizes are measured between internal wall surfaces, including furnishings.