

CAVERSHAM WHARF, READING, BERKSHIRE, RG1
£2,250 PER MONTH FURNISHED

MODERN SECOND FLOOR THREE BEDROOM APARTMENT OVERLOOKING THE RIVER THAMES

Reading | 0118 4022 300 | reading@winkworth.co.uk



for every step...

winkworth.co.uk

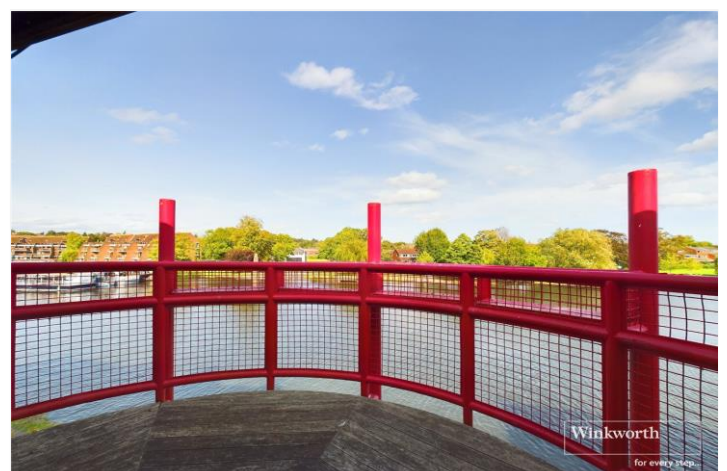


DESCRIPTION:

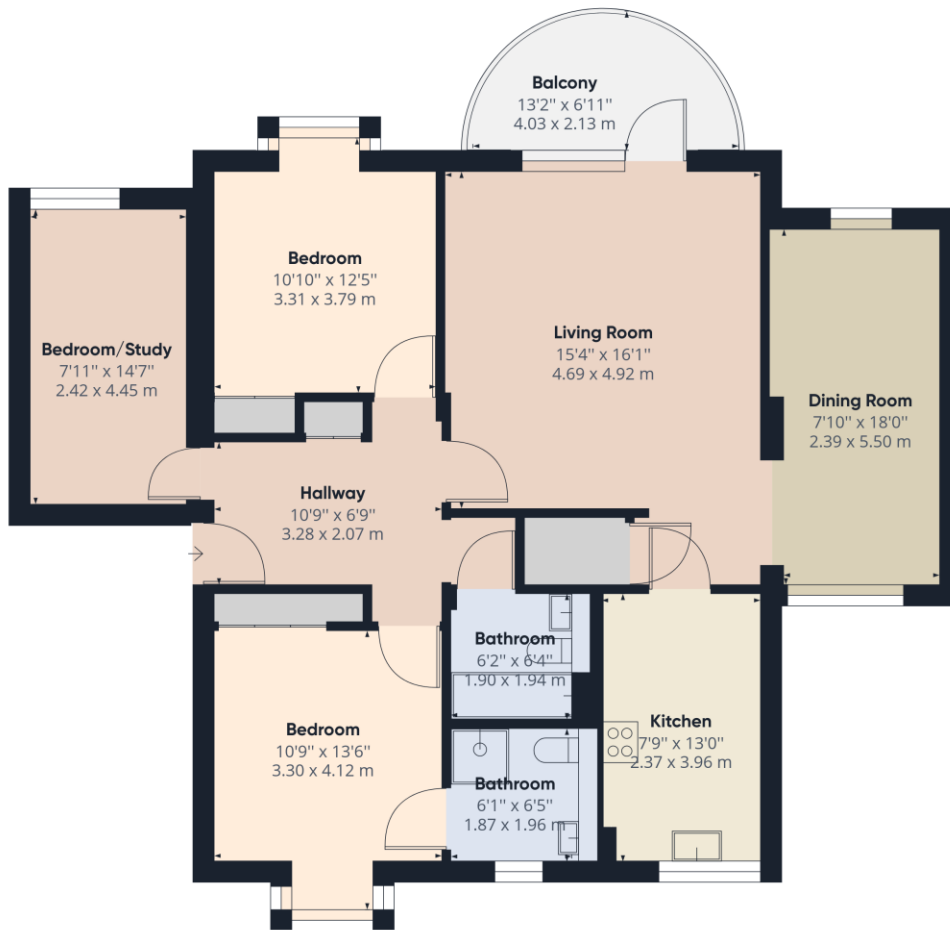
A spacious second floor three bedroom apartment overlooking the River Thames, a short walk from Reading town centre and Caversham. The property comprises open plan lounge and dining room with a generous balcony overlooking the River Thames, modern kitchen, three double bedrooms, en suite shower room to the master bedroom and a three piece bathroom. Also benefits from off road residents parking and a garage. Available 6th July 2024. Furnished.

AT A GLANCE

- Second floor apartment
- Three bedrooms
- Modern kitchen & bathrooms
- Private balcony
- Council tax band F
- Single garage
- Available 6th July
- Furnished







Approximate total area⁽¹⁾
 1136.26 ft²
 105.56 m²

(1) Excluding balconies and terraces

While every attempt has been made to ensure accuracy, all measurements are approximate, not to scale. This floor plan is for illustrative purposes only.

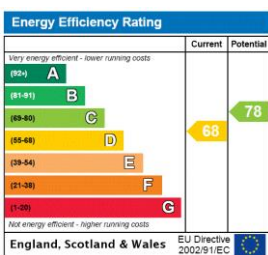
GIRAFFE360

This floorplan is for illustration purposes only and is not to scale. The position and size of doors, windows, appliances and other features are approximate.

Deposit: £2,596.15

Council Tax Band:F

Where no figures are shown, we have been unable to ascertain the information. All figures that are shown were correct at the time of printing.



Reading | 0118 4022 300 | reading@winkworth.co.uk



for every step...

winkworth.co.uk

Winkworth wishes to inform prospective buyers and tenants that these particulars are a guide and act as information only. All our details are given in good faith and believed to be correct at the time of printing but they don't form part of an offer or contract. No Winkworth employee has authority to make or give any representation or warranty in relation to this property. All fixtures and fittings, whether fitted or not are deemed removable by the vendor unless stated otherwise and room sizes are measured between internal wall surfaces, including furnishings.