



GROVE PARK ROAD, W4
£565,000 LEASEHOLD

A SPACIOUS TWO BEDROOM GROUND FLOOR APARTMENT

Chiswick | 020 8994 7096 | chiswick@winkworth.co.uk

Winkworth

for every step...

winkworth.co.uk



DESCRIPTION:

A well-proportioned ground floor apartment with accommodation in excess of 800 square feet. Comprising a spacious lounge/dining room with a smart kitchen area, two double bedrooms, the main bedroom benefits from a smart en-suite bathroom, a family bathroom and ample storage. With well-maintained communal gardens and resident's parking.

Grove Park Road is a beautiful tree lined road within the sought after Grove Park Conservation area. The river Thames and Strand on the Green are close by with Chiswick mainline station (Zone 3) just moments away with its regular fast connection to Clapham Junction, Vauxhall and Waterloo. Central London and Heathrow (A4/M4) are easily accessible for the motorist heading to London, Heathrow or the West Country. There is an eclectic mix of shops and eateries close by. The area is well serviced by several leading schools in both the state and private sector.

The lease is in excess of 900 years and the apartment is offered with no onward chain.

For details of the leasehold, including the length of lease, annual service charge and ground rent, please contact Winkworth, Chiswick.

Ground rent is £100 per annum.

Service charge is £4,034.74.

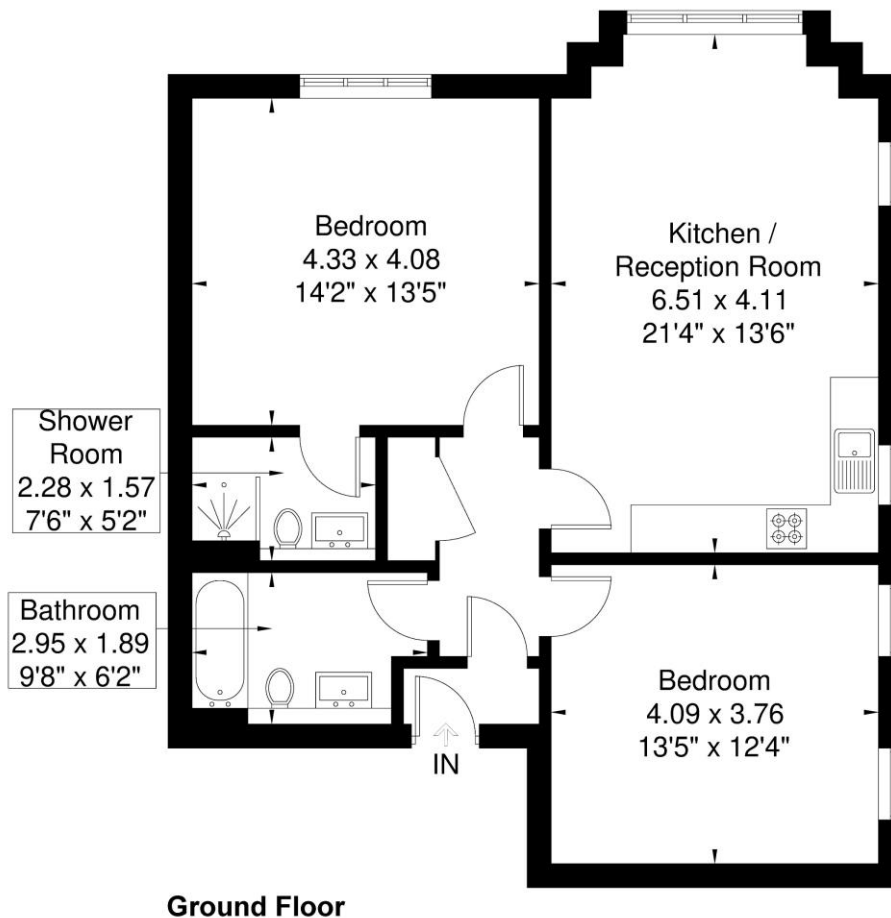
ACCOMMODATION

- Grove Park
- Ground Floor Apartment
- Two Double Bedrooms
- Two Bathrooms
- Communal Gardens
- Long Lease
- No Onward Chain



Grove Park Road

Approximate Gross Internal Area = 76.8 sq m / 826 sq ft

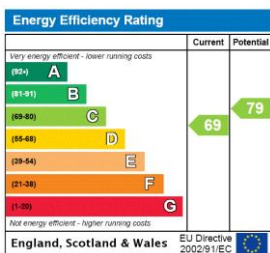


Ground Floor

Winkworth

Although every attempt has been made to ensure accuracy, all measurements are approximate.
The floorplan is for illustrative purposes only and not to scale.
© www.perspective.co.uk

This floorplan is for illustration purposes only and is not to scale. The position and size of doors, windows, appliances and other features are approximate.



Chiswick | 020 8994 7096 | chiswick@winkworth.co.uk



for every step...

winkworth.co.uk

Winkworth wishes to inform prospective buyers and tenants that these particulars are a guide and act as information only. All our details are given in good faith and believed to be correct at the time of printing but they don't form part of an offer or contract. No Winkworth employee has authority to make or give any representation or warranty in relation to this property. All fixtures and fittings, whether fitted or not are deemed removable by the vendor unless stated otherwise and room sizes are measured between internal wall surfaces, including furnishings.