



**OXFORD GARDENS, LONDON, W10**  
**£2,895 PER MONTH**

**A FANTASTIC GROUND FLOOR VICTORIAN  
CONVERSION FLAT BENEFITING FROM A  
LARGE PRIVATE SOUTH-FACING GARDEN**

North Kensington | 020 7792 5000 | northkensington@winkworth.co.uk

**Winkworth**

for every step...

*winkworth.co.uk*





A stunning two-bedroom apartment, in immaculate condition, with an unusually secluded South-West facing garden situated on a superb residential street located close to the bustle of Ladbroke Grove and Portobello Road.

This spacious property benefits from high ceilings and beautiful solid wood floors throughout. The large bright living room with floor to ceiling glass doors leading on to the sunny bright garden, is exceptionally spacious with a fantastic open plan kitchen. There are two large double bedrooms, the master having three fitted double wardrobes and a contemporary bathroom complete with bath and shower fixtures. The stunning private southwest facing garden benefits from sunlight all day long and benefits from a garden shed.

Oxford Gardens is a beautiful tree lined street situated in North Kensington. It is a short walk to Ladbroke Grove station (Hammersmith & City Line) and Portobello Road which offers a wide selection of cafes, shops and restaurants. EPC RATING D.

## AT A GLANCE

- QUIET TREE LINED RESIDENTIAL STREET
- PRIVATE GARDEN
- SPACIOUS
- BRIGHT
- CLOSE TO TRANSPORT LINKS





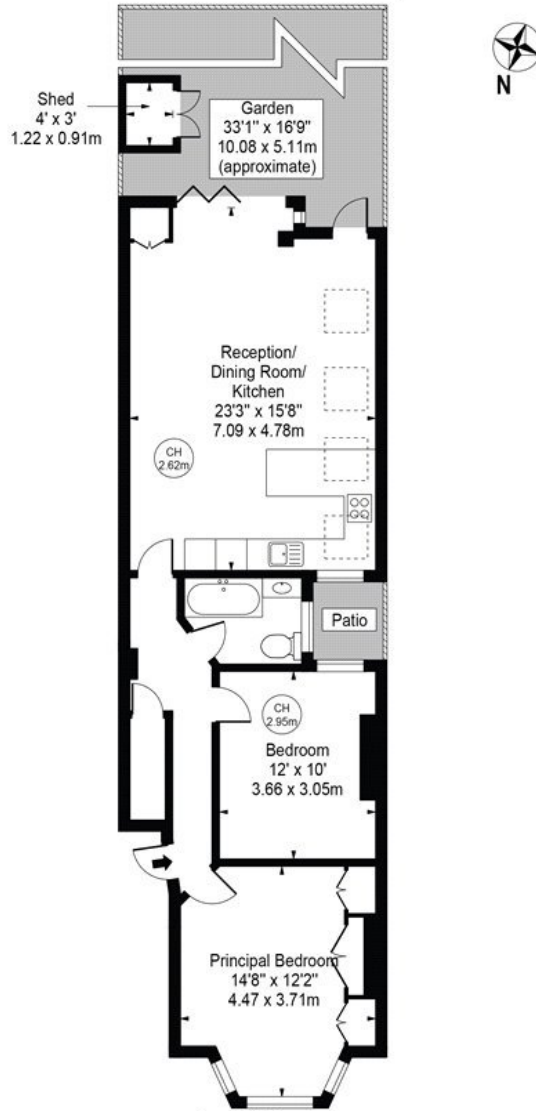




# Oxford Gardens

Approx. Gross Internal Area 782 Sq Ft - 72.65 Sq M  
(Excluding Shed)

Approx. Gross Internal Area Of Shed 12 Sq Ft - 1.11 Sq M



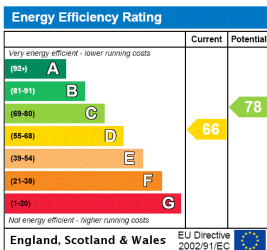
Ground Floor

For Illustration Purposes Only - Not To Scale

This floor plan should be used as a general outline for guidance only and does not constitute in whole or in part an offer or contract. Any intending purchaser or lessee should satisfy themselves by inspection, searches, enquiries and full survey as to the correctness of each statement. Any areas, measurements or distances quoted are approximate and should not be used to value a property or be the basis of any sale or let.

Copyright Morriarti Photography & Design LTD

This floorplan is for illustration purposes only and is not to scale. The position and size of doors, windows, appliances and other features are approximate.



North Kensington | 020 7792 5000 | northkensington@winkworth.co.uk



for every step...

winkworth.co.uk

Winkworth wishes to inform prospective buyers and tenants that these particulars are a guide and act as information only. All our details are given in good faith and believed to be correct at the time of printing but they don't form part of an offer or contract. No Winkworth employee has authority to make or give any representation or warranty in relation to this property. All fixtures and fittings, whether fitted or not are deemed removable by the vendor unless stated otherwise and room sizes are measured between internal wall surfaces, including furnishings.