



UPPER MAISONETTE, LUCERNE ROAD, LONDON, N5  
£875,000 SHARE OF FREEHOLD

A BEAUTIFULLY PRESENTED, TWO DOUBLE  
BEDROOM MAISONETTE WITH TERRACE IN  
HIGHBURY, N5.

Highbury | 0207 989 7000 | [highbury@winkworth.co.uk](mailto:highbury@winkworth.co.uk)

**Winkworth**

[winkworth.co.uk](http://winkworth.co.uk)

See things differently





## DESCRIPTION:

A sensational, two double bedroom maisonette positioned on a beautiful, tree lined street in Highbury, N5. Standing close to 900 sqft, after entering through your own front door on the raised ground floor, you are welcomed into a stunning, south facing living room spanning the full width of the building. The rear of the first floor occupies a spacious kitchen with ample dining space creating the perfect entertaining area. Both bedrooms on the top floor are genuine doubles, while the property is completed with a peaceful terrace overlooking neighbouring gardens and a modern family bathroom.

Lucerne Road is set moments from Highbury Fields and the cafes and independent shops on Highbury Barn. The high street shops, bars and restaurants on Upper Street are within easy reach whilst there is also a fantastic selection of transport links. Arsenal offers the closest underground links on the Piccadilly line whilst Highbury and Islington provides the Victoria line and overground services. Easy access to Moorgate is facilitated from Drayton Park and a selection of superb bus links offer easy access across London.

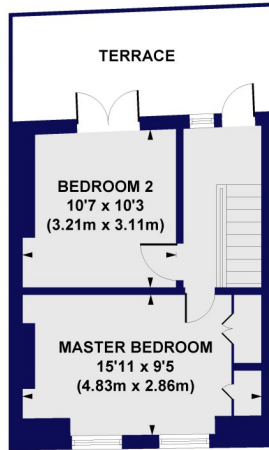
**Winkworth**



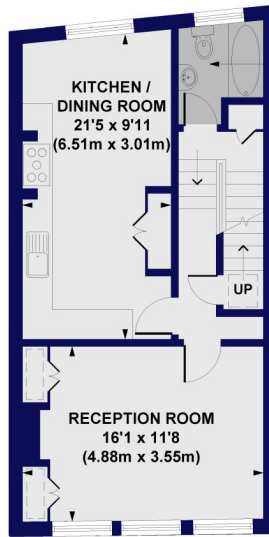


**Winkworth**

**Upper Maisonette, Lucerne Road, N5**  
 Approx. Gross Internal Floor Area 892 sq. ft / 82.85 sq. m



**SECOND FLOOR**  
 GROSS INTERNAL  
 FLOOR AREA 322 SQ FT



**FIRST FLOOR**  
 GROSS INTERNAL  
 FLOOR AREA 526 SQ FT

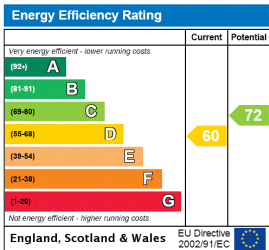


**GROUND FLOOR**  
 GROSS INTERNAL  
 FLOOR AREA 44 SQ FT

All measurements of walls, doors, windows, fittings and appliances, including their size and location, are shown as standard sizes and do not constitute any warranty or representation by the seller, their agent or CP Creative. Any intending purchaser must satisfy himself by inspection or otherwise as to the correctness of the information contained in these plans. This plan is for illustrative purposes only and should be used as such by any prospective purchasers.



This floorplan is for illustration purposes only and is not to scale. The position and size of doors, windows, appliances and other features are approximate.



Highbury | 0207 989 7000 | highbury@winkworth.co.uk



winkworth.co.uk

See things differently

Winkworth wishes to inform prospective buyers and tenants that these particulars are a guide and act as information only. All our details are given in good faith and believed to be correct at the time of printing but they don't form part of an offer or contract. No Winkworth employee has authority to make or give any representation or warranty in relation to this property. All fixtures and fittings, whether fitted or not are deemed removable by the vendor unless stated otherwise and room sizes are measured between internal wall surfaces, including furnishings.