



FRANCISCAN ROAD, SW17
£585,000 FREEHOLD

**FANTASTIC 2 DOUBLE BEDROOM HOUSE WITH
MODERN INTERIOR, A MUST SEE!**

Tooting | 020 8767 5221 | tooting@winkworth.co.uk

Winkworth

for every step...

winkworth.co.uk

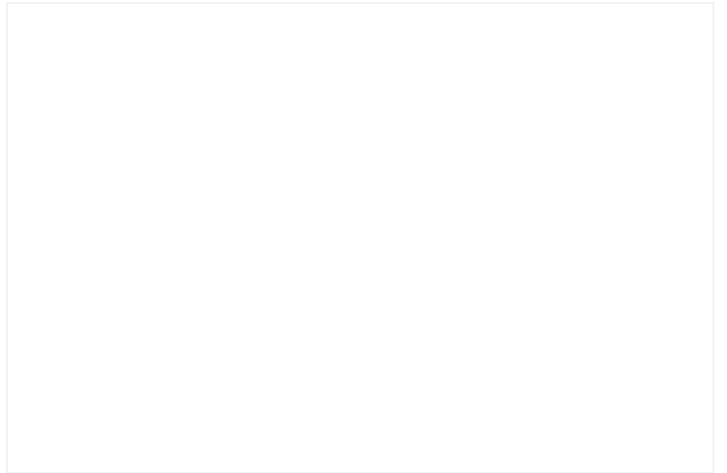
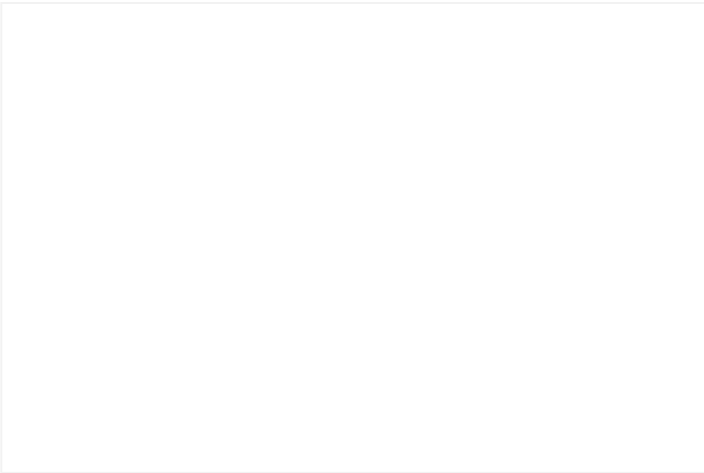


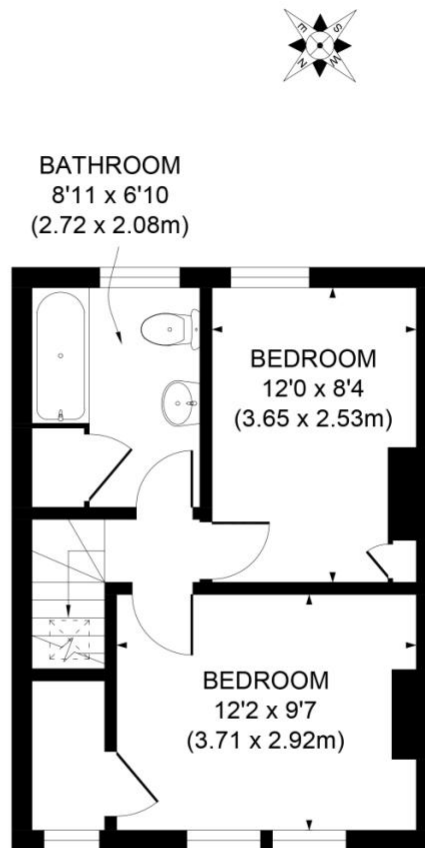
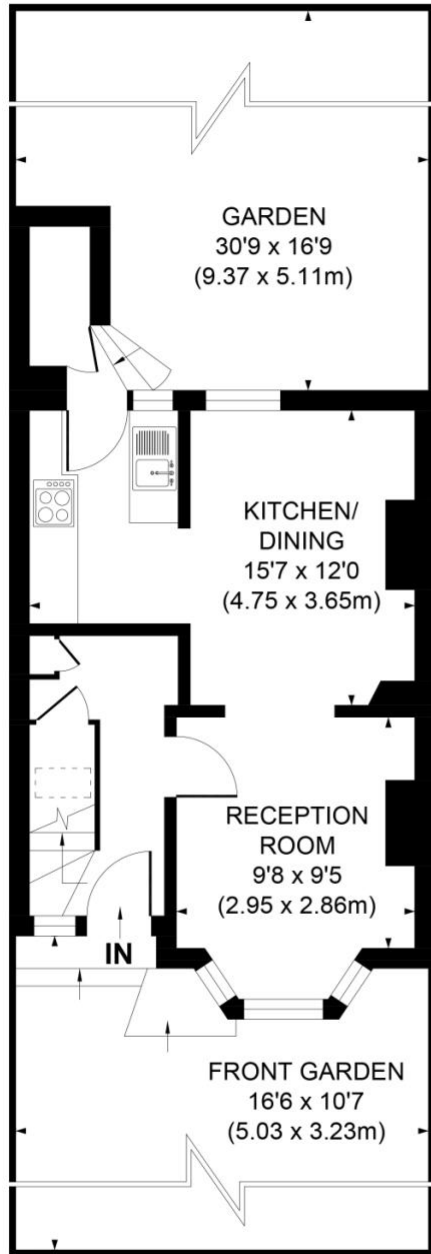
DESCRIPTION:

NO ONWARD CHAIN - A beautiful and well arranged two double bedroom house on this very popular road in Tooting. Comprising a through lounge with space for dining, modern kitchen that leads onto a well maintained rear garden, and two well-proportioned double bedrooms and a modern bathroom.

Ideally located for both Tooting Bec and Tooting Broadway underground stations and amenities.

25/11/22 - Please note the photos used for marketing purposes were taken in 2020.



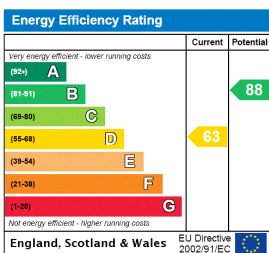


GROUND FLOOR

APPROX. GROSS INTERNAL FLOOR AREA 707 SQ. FT / 65.70 SQ. M

Illustration for identification purpose only, not to scale
All measurements are maximum, and includes wardrobes and window bays where applicable
Prepared by Pixangle ©. Tel 020 8870 2118

This floorplan is for illustration purposes only and is not to scale. The position and size of doors, windows, appliances and other features are approximate.



Tooting | 020 8767 5221 | tooting@winkworth.co.uk

for every step...

winkworth.co.uk

Winkworth wishes to inform prospective buyers and tenants that these particulars are a guide and act as information only. All our details are given in good faith and believed to be correct at the time of printing but they don't form part of an offer or contract. No Winkworth employee has authority to make or give any representation or warranty in relation to this property. All fixtures and fittings, whether fitted or not are deemed removable by the vendor unless stated otherwise and room sizes are measured between internal wall surfaces, including furnishings.