



WHITEHOUSE AVENUE, HERTFORDSHIRE, WD6
£699,950 FREEHOLD

CHAIN FREE DETACHED THREE BEDROOM CHALET STYLE BUNGALOW IN SOUTH BOREHAMWOOD

Borehamwood | 020 8953 8899 | borehamwood@winkworth.co.uk



DESCRIPTION:

Located in a highly sought after turning on the south side of Borehamwood, a short walk from the town centre and close to several Good and Outstanding Ofsted rated schools including Yavneh, Summerswood and Monksmead is this rarely available three bedroom detached chalet Bungalow.

Having been in the same ownership for over forty years the property has been well cared for, is offered for sale chain free and provides substantial scope to extend subject to the usual planning restraints.

AT A GLANCE

- 3 Bedrooms
- South Borehamwood
- Chain Free
- Double Reception
- 967 Square Feet
- Scope To Extend (Stpp)
- Off Street Parking
- Own Driveway
- Large Secluded Rear Garden





Approximate Gross Internal Area = 89.8 sq m / 967 sq ft
(Excluding Eaves)

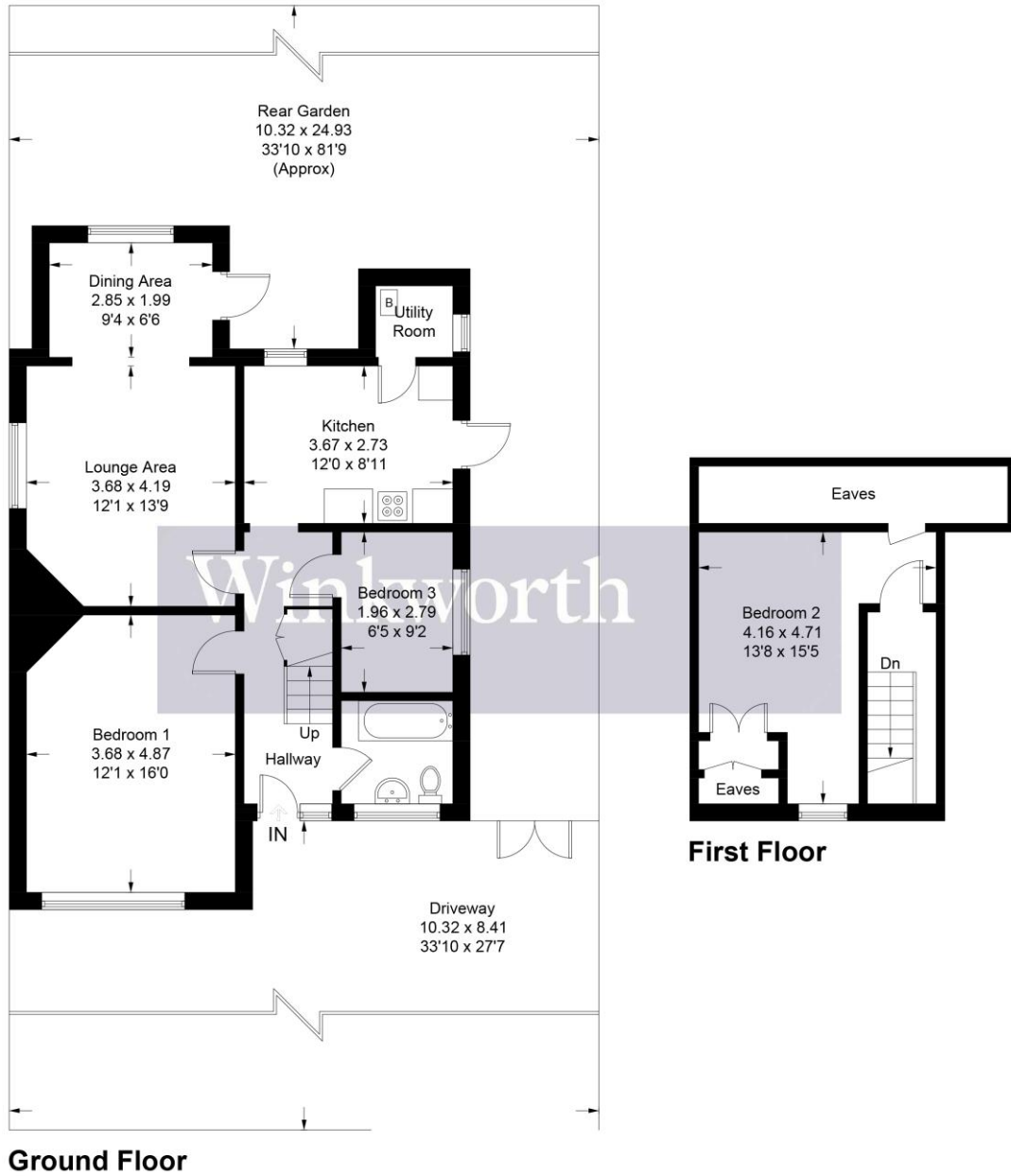


Illustration for identification purposes only, measurements are approximate, not to scale. Winkworth © 2023 (ID989861)

This floorplan is for illustration purposes only and is not to scale. The position and size of doors, windows, appliances and other features are approximate.

Energy Efficiency Rating	
	Potential
Very energy efficient - lower running costs	
(92-100) A	
(81-91) B	83
(69-80) C	
(55-68) D	56
(39-54) E	
(21-38) F	
(1-20) G	
Not energy efficient - higher running costs	
England, Scotland & Wales	EU Directive 2002/91/EC