



## LYNDALE AVENUE, NW2 **£4,500,000 FREEHOLD**

Brand newly refurbished six-bedroom house set on a large corner plot on Lyndale Avenue, Offering six double bedrooms, four bathrooms (four en-suite) and three guest cloak rooms.

Offering over 5,135sqft of internal accommodation including, dine in kitchen with walk in pantry, separate utility room, south facing reception, dining room with a balcony overlooking the 68" rear south facing garden where you will find an expansive landscaped gardening with a 300sqft garden studio/media room which is home to a kitchen and media centre.

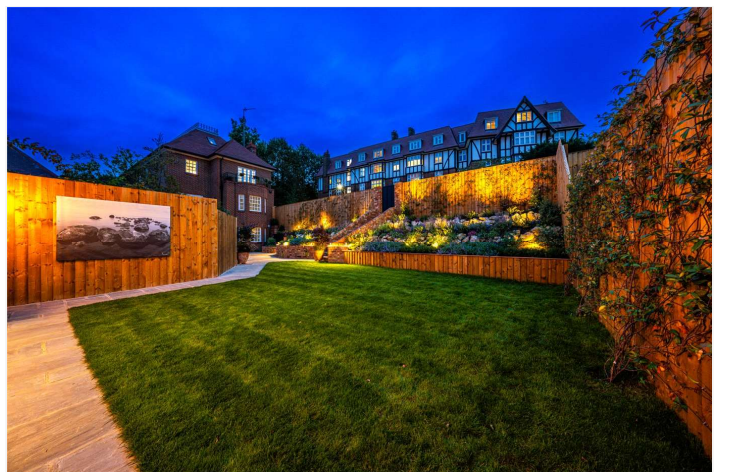
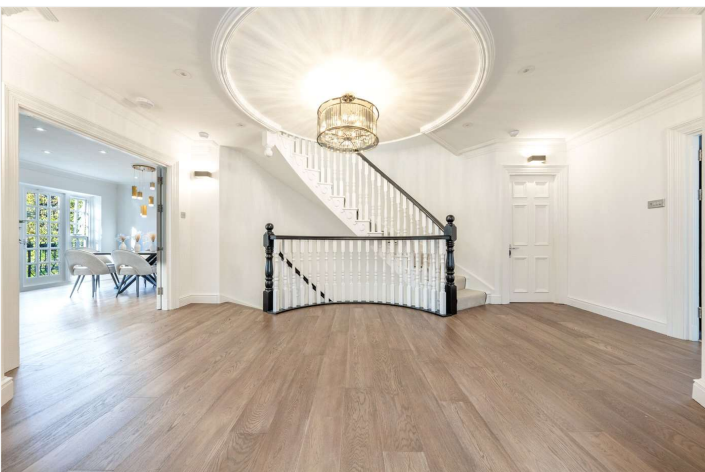
Six Double Bedrooms | Five Bathrooms (Three En-Suite) | Three Guest Cloak Rooms | Dine In Kitchen | Separate Utility Room | South Facing Reception | Balcony | 68" Rear South Facing Garden | 300sqft Garden Studio | Media Room

View our virtual tour here: <https://www.youtube.com/watch?v=vcgDprtm1yU>

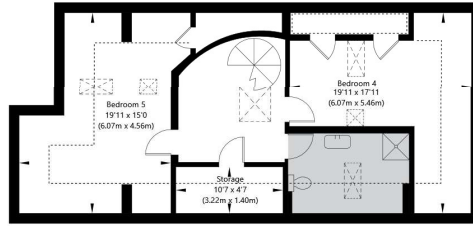
**Winkworth**

for every step...

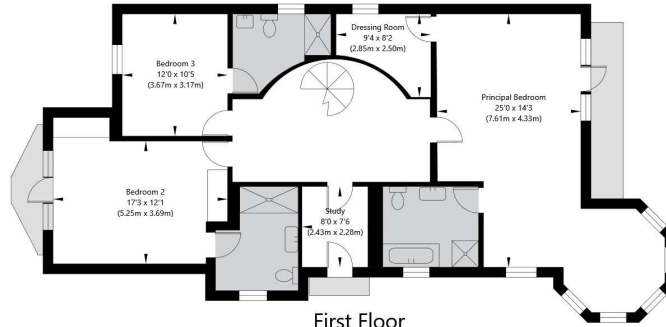
[winkworth.co.uk/west-hampstead](http://winkworth.co.uk/west-hampstead)



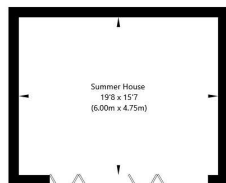
# Lyndale Avenue, London NW2 2QB



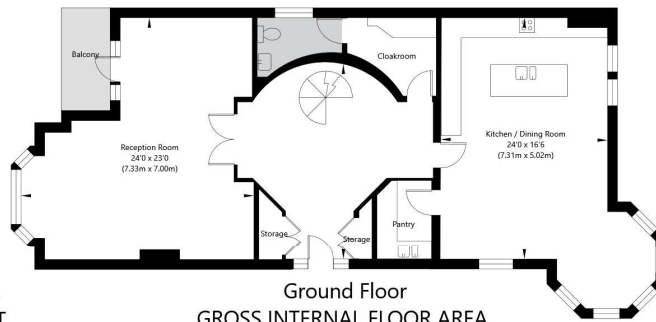
**Top Floor**  
GROSS INTERNAL FLOOR AREA  
APPROX. 78.22 SQ M / 842 SQ FT



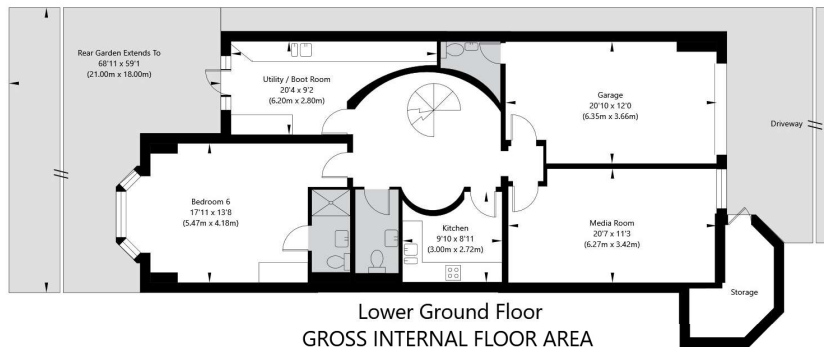
**First Floor**  
GROSS INTERNAL FLOOR AREA  
APPROX. 123.05 SQ M / 1324 SQ FT



**Ground Floor**  
GROSS INTERNAL FLOOR AREA  
APPROX. 28.5 SQ M / 307 SQ FT



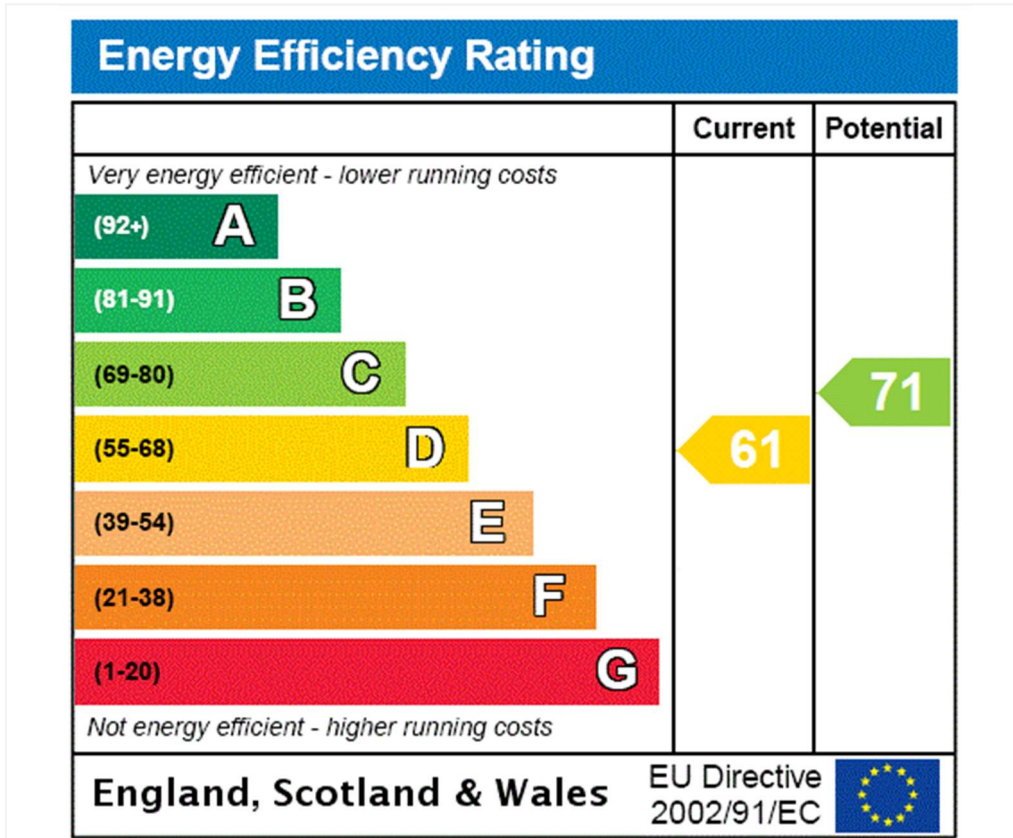
**Ground Floor**  
GROSS INTERNAL FLOOR AREA  
APPROX. 123.55 SQ M / 1330 SQ FT



**Lower Ground Floor**  
GROSS INTERNAL FLOOR AREA  
APPROX. 123.78 SQ M / 1332 SQ FT

APPROXIMATE GROSS INTERNAL FLOOR AREA 477.1 SQ M / 5135 SQ FT

THIS FLOOR PLAN IS FOR ILLUSTRATIVE PURPOSES ONLY AND SHOULD BE USED FOR THIS PURPOSE BY PROSPECTIVE APPLICANTS AS ITS NOT TO SCALE.  
(c) AMBERSHORE PIX LIMITED / PHOTO - VIDEO - FLOOR PLANS / 0800 999 1577 / WWW.AMERSHOREPIX.CO.UK



Tenure: Freehold

Council Tax Band: G

Where no figures are shown, we have been unable to ascertain the information. All figures that are shown were correct at the time of printing.

Where no figures are shown, we have been unable to ascertain the information. All figures that are shown were correct at the time of printing. These particulars are not an offer or contract, nor part of one. You should not rely on statements by Winkworth in the particulars or by word of mouth or in writing "information" as being factually accurate about the property, its condition or its value. Winkworth does not have any authority to make any representations about the property, and accordingly any information given is entirely without responsibility on the part of the agents, seller(s) or lessor(s). These particulars are prepared on the basis of the information supplied by our client and are a rough guide for information only. The photographs show only certain parts of the property. We are not able to check all of the information and therefore are unable to guarantee accuracy. All interested parties are therefore advised to undertake all necessary inspections and checks that they deem appropriate. Where displayed, the square footage is taken from the floor plans, which are created by an independent supplier. These measurements are approximate and included for illustrative purposes only. The measurements may vary. Winkworth does not make any representation as to the accuracy of these measurements and you should seek to verify them for yourself. Winkworth accept no liability for any loss you may suffer if you rely on these measurements. All fixtures and fittings, whether fitted or not are deemed removable by the vendor unless stated. Any reference to alterations to, or use of, any part of the property does not mean that any necessary planning, building regulations or other consent has been obtained. Amenities and appliances have not been tested

West Hampstead | 142 West End Lane, London, NW6 1SD  
020 7483 7602 | westhampstead@winkworth.co.uk



for every step...

[winkworth.co.uk/west-hampstead](http://winkworth.co.uk/west-hampstead)

Winkworth wishes to inform prospective buyers and tenants that these particulars are a guide and act as information only. All our details are given in good faith and believed to be correct at the time of printing but they don't form part of an offer or contract. No Winkworth employee has authority to make or give any representation or warranty in relation to this property. All fixtures and fittings, whether fitted or not are deemed removable by the vendor unless stated otherwise and room sizes are measured between internal wall surfaces, including furnishings.