



CHANDLERY HOUSE, GOWERS WALK, LONDON, E1
£500,000 LEASEHOLD

A BEAUTIFULLY PRESENTED TWO BEDROOM
APARTMENT IN THIS STUNNING
WAREHOUSE CONVERSION.

Shoreditch | 020 7749 7650 | shoreditch@winkworth.co.uk



winkworth.co.uk

See things differently



DESCRIPTION:

A truly unique and beautiful two-bedroom apartment situated on the first floor of this sought-after Grade II listed warehouse conversion in the heart of Aldgate. Offered chain-free, the property boasts original features, exposed brick work, and Crittall windows throughout adding to the open and spacious feel of the apartment.

The flat comprises of a large open-plan reception room/kitchen, family bathroom, and two great sized double bedrooms with built-in storage. The apartment also benefits from on-site concierge and secure phone entry system.

Situated on Gowers Walk, opposite the brand-new Goodman's Field development with Curzon cinema, the apartment offers numerous transport options including Tower Hill, Aldgate, Aldgate East and Whitechapel (Crossrail) underground stations which are all within easy walking distance. There is also a wealth of local amenities on your doorstep with The City, Brick Lane, St. Katherine's Dock, Spitalfields markets with their boutique shops, cafes, bars and restaurants. A great apartment for discerning urban buyer.

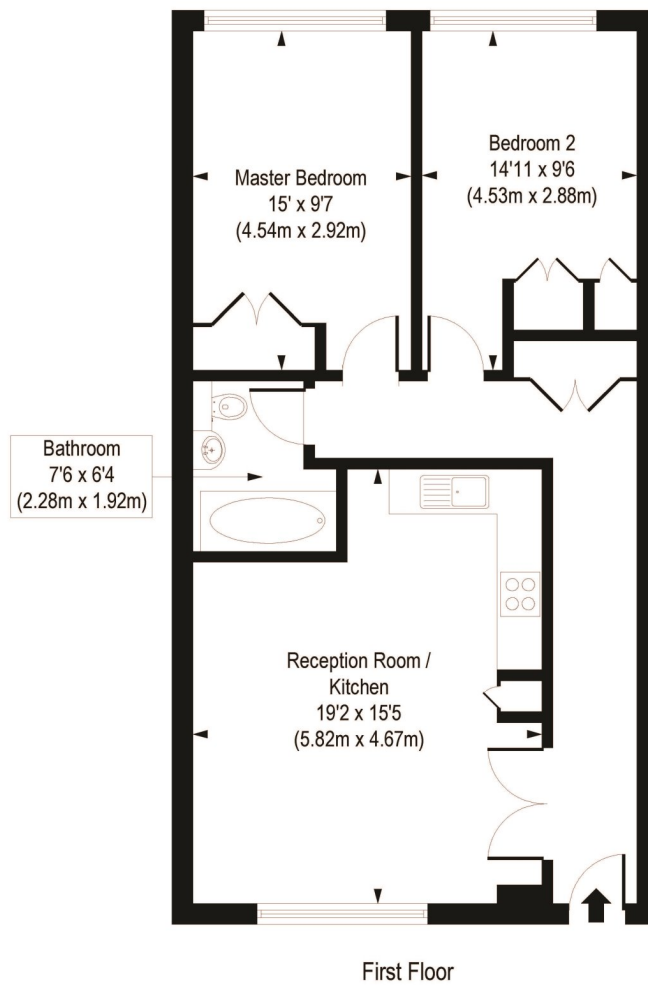
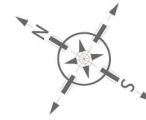
Winkworth



Winkworth

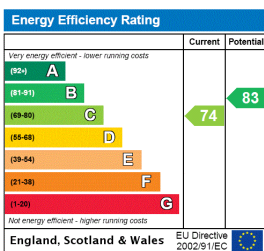
Gowers Walk , E1

Approx. Gross Internal Floor Area 748 sq. ft / 69.45 sq. m



COMPLIANT WITH RICS CODE OF MEASURING PRACTICE. Floorplan is for illustrative purposes only and is not to scale. Every attempt has been made to ensure the accuracy of the floorplan shown, however all measurements, fixtures, fittings and data shown are an approximate interpretation for illustrative purposes only. Liability for errors, omissions or mis-statement through negligence or otherwise is hereby excluded.

This floorplan is for illustration purposes only and is not to scale. The position and size of doors, windows, appliances and other features are approximate.



Shoreditch | 020 7749 7650 | shoreditch@winkworth.co.uk



winkworth.co.uk

See things differently

Winkworth wishes to inform prospective buyers and tenants that these particulars are a guide and act as information only. All our details are given in good faith and believed to be correct at the time of printing but they don't form part of an offer or contract. No Winkworth employee has authority to make or give any representation or warranty in relation to this property. All fixtures and fittings, whether fitted or not are deemed removable by the vendor unless stated otherwise and room sizes are measured between internal wall surfaces, including furnishings.