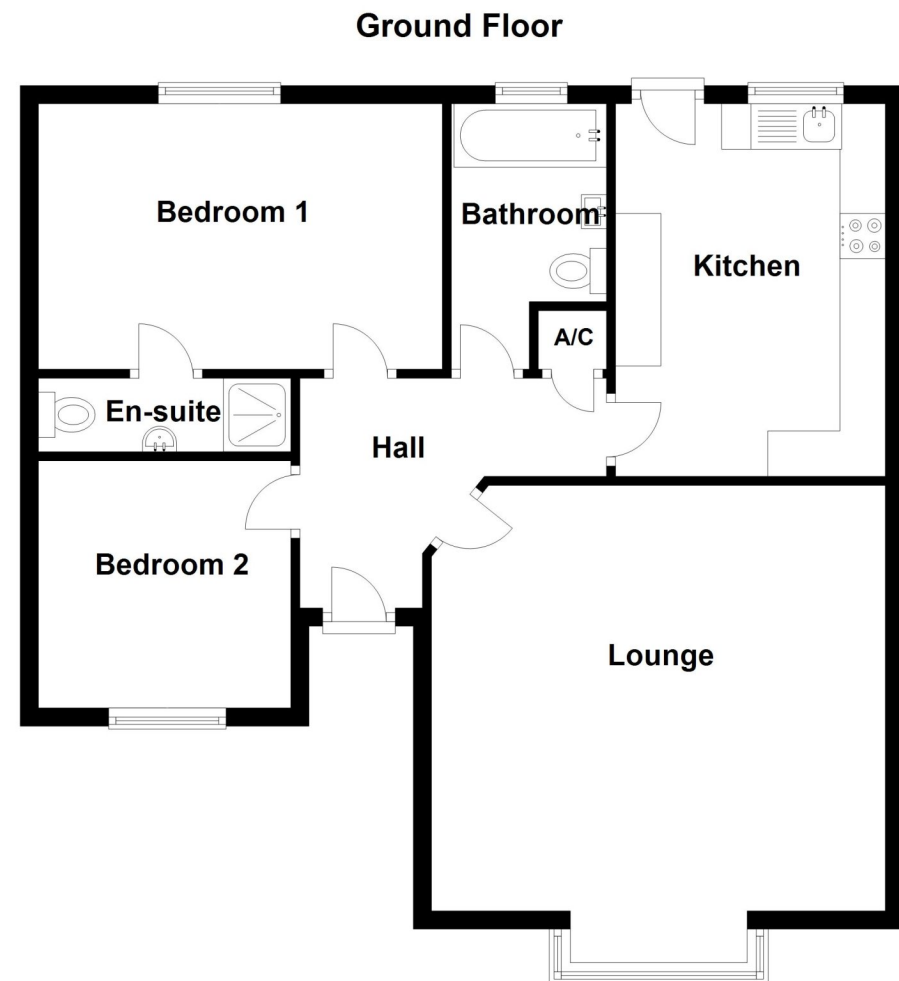


Houlden Way, Heckington, Sleaford

This floorplan is for illustration purposes only and is not to scale. The position and size of doors, windows, appliances and other features are approximate.



17 Houlden Way, Heckington, Sleaford, Lincolnshire, NG34 9TY

£235,000 Freehold

Winkworth are delighted to offer for sale this Two Double Bedroom Detached Bungalow benefitting from no onward chain. The property is well positioned in a cul-de-sac position in a desirable part of the sought after village of Heckington.

This style of Bungalow is extremely popular as it offers Two great sized Bedrooms and a lovely Lounge/Diner with box bay window to front aspect. The owner has had an En-Suite Shower Room added to the Master Bedroom and a newly fitted walk-in Bathroom.

NO CHAIN | DETACHED BUNGALOW | POPULAR VILLAGE LOCATION | TWO DOUBLE BEDROOMS | EN-SUITE TO MASTER | MODERN KITCHEN | WELL PRESENTED THROUGHOUT | DETACHED GARAGE

Winkworth

Winkworth Sleaford | 01529 303377 | sleaford@winkworth.co.uk

winkworth.co.uk/sleaford

See things differently.

Under the Property Misdescriptions Act 1991 these particulars are a guide and act as information only. All details are given in good faith and are believed to be correct at time of printing. Winkworth give no representation as to their accuracy and potential purchasers or tenants must satisfy themselves or otherwise as to their correctness. No employee of Winkworth has authority to make or give any representation or warranty in relation to this property.

Winkworth

See things differently.

ACCOMMODATION

Entrance Hall

Lounge/Diner - 16'5" x 15'4" (5m x 4.67m)

Kitchen - 13'8" x 9'6" (4.17m x 2.9m)

Bedroom One - 15'1" x 9'6" (4.6m x 2.9m)

En-Suite Shower Room - 9' x 4'4" (2.74m x 1.32m)

Bedroom Two - 10'2" x 9'1" (3.1m x 2.77m)

Family Bathroom - 9'5" x 5'5" (2.87m x 1.65m)

Garage - 16'8" x 8'10" (5.08m x 2.7m)

LOCAL AUTHORITY

North Kesteven District Council

TENURE

Freehold

COUNCIL TAX BAND

B

