



50 SUTTON ROAD,
NEWBURY, BERKSHIRE,
RG14 1UT

A modern three bedroom mid terrace house with garden and garage in a block.

(Please note these are library pictures)

The house has entrance hall, sitting/dining room, kitchen, three bedrooms and bathroom. There is a garden with patio area and garage in a nearby block.

For sale with no onward chain.



Winkworth

50 Sutton Road, Speen, Newbury, RG14 1UT

Approximate Gross Internal Area
71.5 sq m / 770 sq ft



AT A GLANCE

- Three Bedrooms
- Sitting Room
- Kitchen
- Bathroom
- Off Street Parking
- Garage in block

SITUATION

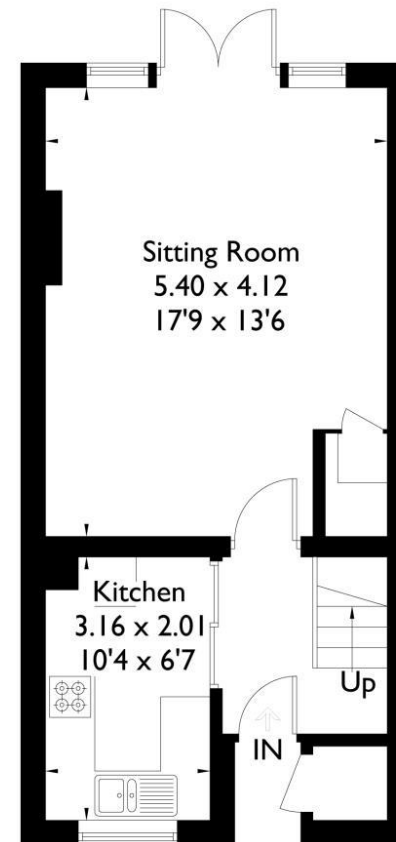
The property is situated in Speen, a flat walk to Newbury town centre and close to a primary school and local amenities.

UTILITIES

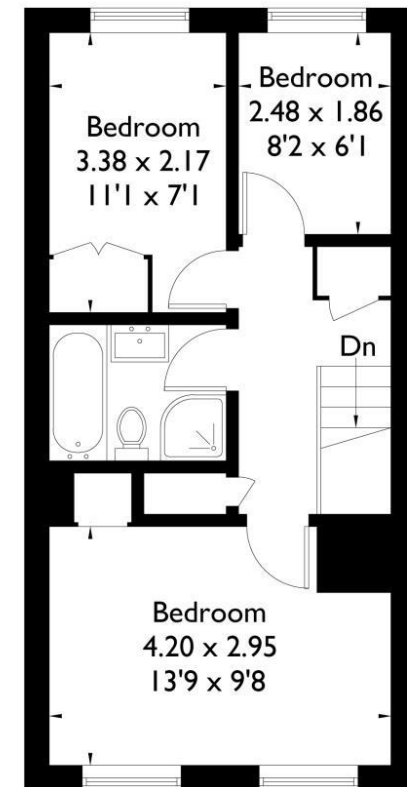
Mains water, electricity, gas and drainage.
Gas fired central heating

DIRECTIONS

For Sat nav, postcode is RG14 1UT



Ground Floor



First Floor

Newbury Office

43 Northbrook Street, Newbury, Berkshire RG14 1DT
01635 552552 | newbury@winkworth.co.uk

winkworth.co.uk/newbury

Winkworth

See things differently.