



MOOT COURT, FRYENT WAY, LONDON, NW9

OIEO £275,000 LEASEHOLD

ONE DOUBLE BEDROOM FIRST FLOOR APARTMENT

- APPROX 92 YEARS LEASE
- AT THE DOORSTEP OF KINGSBURY STATION

Kingsbury | 020 8204 0000 | kingsbury@winkworth.co.uk

Winkworth

for every step...

winkworth.co.uk

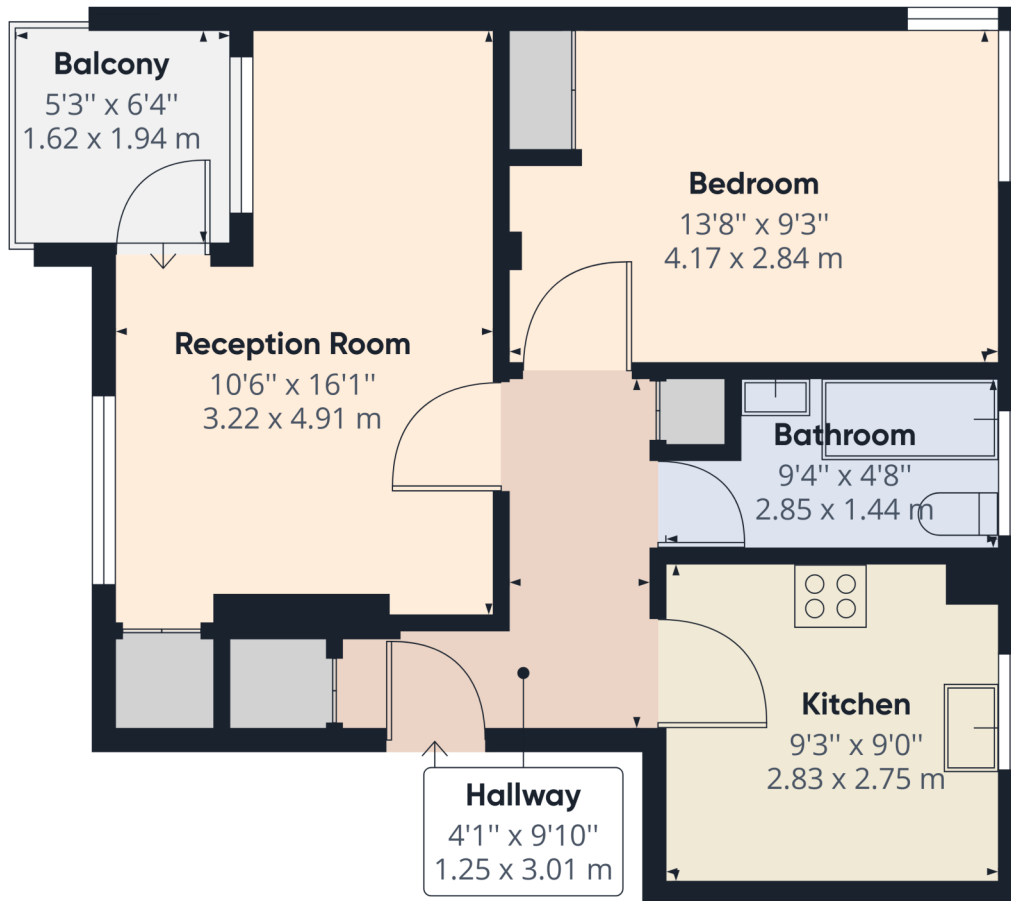


DESCRIPTION: A delightful first floor purpose built apartment comprising of one double bedroom, a simplistic kitchen, a bathroom, and a well sized reception room with balcony. Further benefits include entry phone system, double glazing, residents parking, and communal gardens. The property is well positioned in the heart of Kingsbury just a couple of minutes from Kingsbury Station (Jubilee Line) and all of Kingsbury's wide range of shops, schools, and amenities. An ideal purchase for a first time buyer, or a buy to let investor. An internal viewing is advised.



Winkworth

for every step...



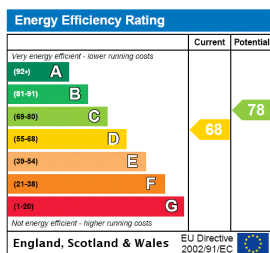
Approximate total area⁽¹⁾
 467.91 ft²
 43.47 m²

(1) Excluding balconies and terraces

While every attempt has been made to ensure accuracy, all measurements are approximate, not to scale. This floor plan is for illustrative purposes only.

GIRAFFE360

This floorplan is for illustration purposes only and is not to scale. The position and size of doors, windows, appliances and other features are approximate.



Kingsbury | 020 8204 0000 | kingsbury@winkworth.co.uk

for every step...

winkworth.co.uk

Winkworth wishes to inform prospective buyers and tenants that these particulars are a guide and act as information only. All our details are given in good faith and believed to be correct at the time of printing but they don't form part of an offer or contract. No Winkworth employee has authority to make or give any representation or warranty in relation to this property. All fixtures and fittings, whether fitted or not are deemed removable by the vendor unless stated otherwise and room sizes are measured between internal wall surfaces, including furnishings.