



ST. PETER'S CLOSE, SW17
£345,000 LEASEHOLD

A CHARMING SPLIT-LEVEL ONE-BEDROOM FLAT.

Tooting | 020 8767 5221 | tooting@winkworth.co.uk

Winkworth

for every step...

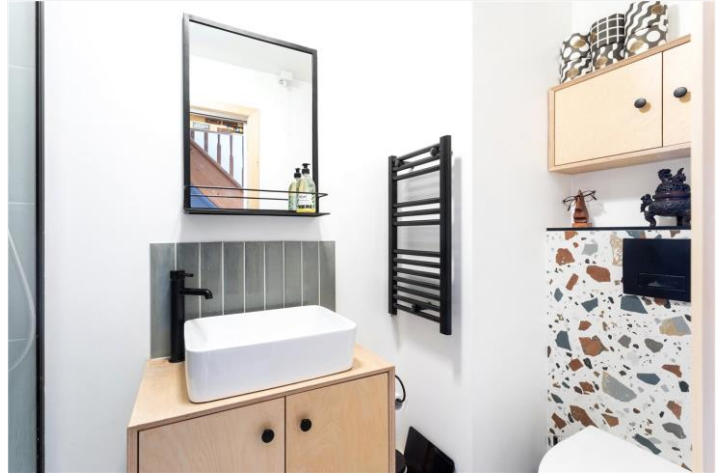
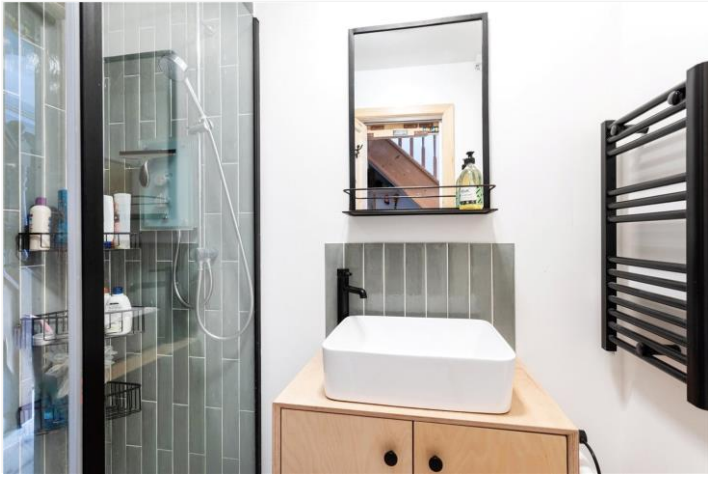
winkworth.co.uk



DESCRIPTION:

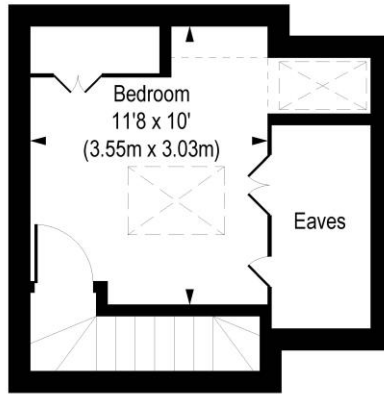
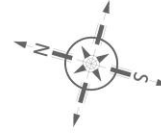
This charming split-level one-bedroom flat offers delightful living space. Upon entry, you're greeted by a luminous reception room featuring polished wooden floors. The recently renovated kitchen exudes beauty and functionality, while the bathroom boasts a convenient walk-in shower. The bedroom, complete with built-in wardrobes, provides ample storage and comfort. The property further benefits from a built in desk/storage area and allocated off street parking.

Nestled within a tranquil yet conveniently situated development, St. Peters Close offers an ideal living environment. Just a brief stroll away, you'll find the expansive greenery of Wandsworth Common, as well as the vibrant array of bars and restaurants on Bellevue Road. Commuting is a breeze with the nearby transport hubs of Wandsworth Common (train) and Tooting Bec (Northern Line Underground) providing easy access to the city and beyond.

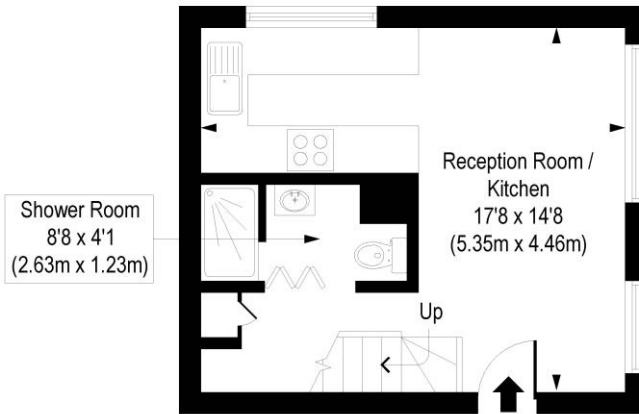


St. Peter's Close, SW17

Approx. Gross Internal Floor Area 463 sq. ft / 43.04 sq. m (Including Eaves)
 Approx. Gross Internal Floor Area 424 sq. ft / 39.40 sq. m (Excluding Eaves)



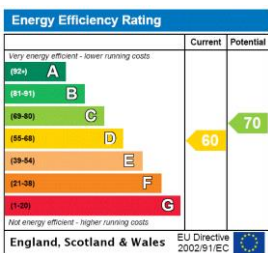
Second Floor
 Gross Internal
 Floor Area 192 sq ft



First Floor
 Gross Internal
 Floor Area 271 sq ft

COMPLIANT WITH RICS CODE OF MEASURING PRACTICE. Floorplan is for illustrative purposes only and is not to scale. Every attempt has been made to ensure the accuracy of the floorplan shown, however all measurements, fixtures, fittings and data shown are an approximate interpretation for illustrative purposes only. Liability for errors, omissions or mis-statement through negligence or otherwise is hereby excluded.

This floorplan is for illustration purposes only and is not to scale. The position and size of doors, windows, appliances and other features are approximate.



for every step...

Tooting | 020 8767 5221 | tooting@winkworth.co.uk

winkworth.co.uk

Winkworth wishes to inform prospective buyers and tenants that these particulars are a guide and act as information only. All our details are given in good faith and believed to be correct at the time of printing but they don't form part of an offer or contract. No Winkworth employee has authority to make or give any representation or warranty in relation to this property. All fixtures and fittings, whether fitted or not are deemed removable by the vendor unless stated otherwise and room sizes are measured between internal wall surfaces, including furnishings.