



FAIRLIGHT ROAD, SW17
£485,000 LEASEHOLD

A WELL PRESENTED TWO BED MAISONETTE WITH PRIVATE GARDEN.

Tooting | 020 8767 5221 | tooting@winkworth.co.uk

Winkworth

for every step...

winkworth.co.uk



DESCRIPTION:

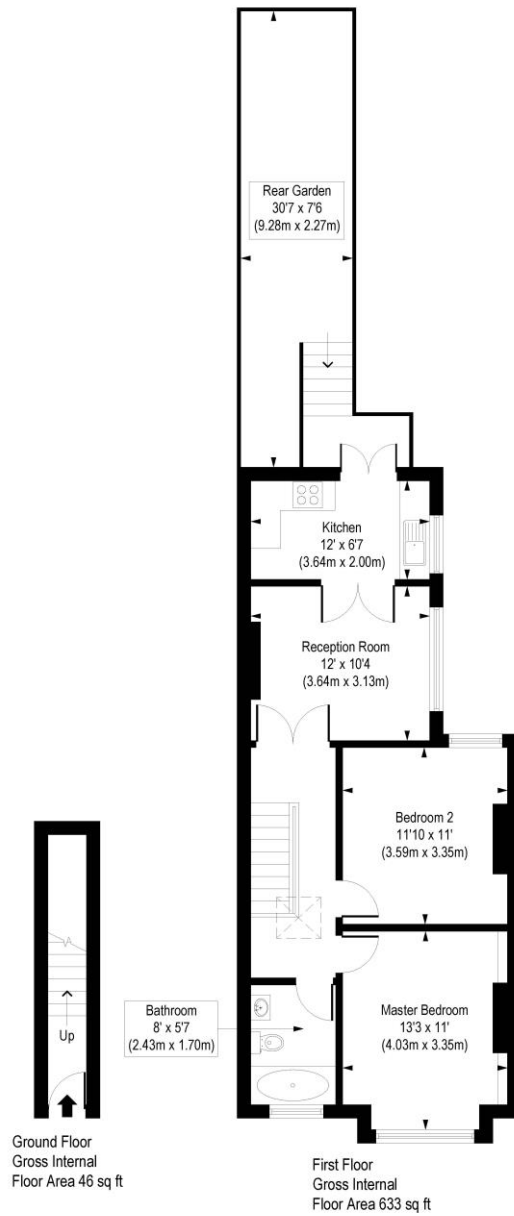
A well presented two-bedroom first floor maisonette situated close to Tooting Broadway. The flat benefits from two double bedrooms, modern bathroom, separate reception room and a modern kitchen with double doors leading onto the private garden.

Fairlight Road is ideally situated for Tooting Broadway Underground station and St Georges Hospital. The green open spaces of both Wandsworth Common and Tooting Bec Common are easily accessible as is the shops, bars and restaurants that both of these areas have to offer.



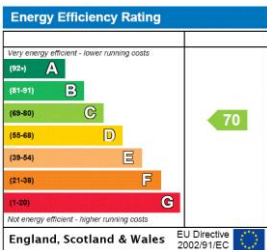
Fairlight Road, SW17

Approx. Gross Internal Floor Area 679 sq. ft / 63.09 sq. m



COMPLIANT WITH RICS CODE OF MEASURING PRACTICE. Floorplan is for illustrative purposes only and is not to scale. Every attempt has been made to ensure the accuracy of the floorplan shown, however all measurements, fixtures, fittings and data shown are an approximate interpretation for illustrative purposes only. Liability for errors, omissions or mis-statement through negligence or otherwise is hereby excluded.

This floorplan is for illustration purposes only and is not to scale. The position and size of doors, windows, appliances and other features are approximate.



Tooting | 020 8767 5221 | tooting@winkworth.co.uk



for every step...

winkworth.co.uk

Winkworth wishes to inform prospective buyers and tenants that these particulars are a guide and act as information only. All our details are given in good faith and believed to be correct at the time of printing but they don't form part of an offer or contract. No Winkworth employee has authority to make or give any representation or warranty in relation to this property. All fixtures and fittings, whether fitted or not are deemed removable by the vendor unless stated otherwise and room sizes are measured between internal wall surfaces, including furnishings.