



ORMESBY WAY, HARROW, HA3
£795,000 FREEHOLD

4-5 BEDROOM SEMI DETACHED BLANK CANVAS IN KENTON.

Kingsbury | 020 8204 0000 | kingsbury@winkworth.co.uk



winkworth.co.uk

See things differently

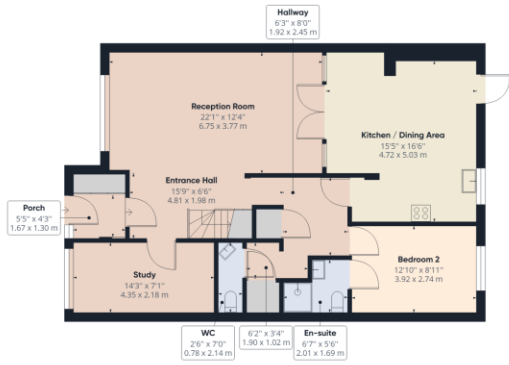


DESCRIPTION: A fantastic opportunity to purchase a lovely four to five bedroom semi-detached blank canvas well positioned close by to the heart of Kenton and all of its amenities. South Kenton and Kenton Stations are just 1 mile away serving the Bakerloo Line, and the property sits within the catchment area for highly rated schools including Sinai Jewish Primary, Uxendon Manor, St Bernadette's, Claremont, JFS and St Gregory's. The property currently consists of a bright and ample reception room adjoining with French doors to a spacious kitchen, a double bedroom with en-suite, a study and W/C on the ground floor, and three well-proportioned bedrooms with a family shower room on the upper level. There is a well sized rear garden with a patio area and an outbuilding catering to your storage/ utility requirements. Further benefits include scope to extend (STPP) as well as off street parking for two cars. If you are a growing family in search of a generous blank canvas to modernise and alter to your specifications, then look no further. An internal viewing is recommended.

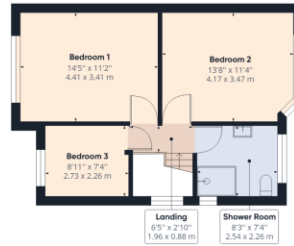




Winkworth



Ground Floor Building 1



Floor 1 Building 1

Approximate total area⁽¹⁾
 1909.85 ft²
 177.43 m²



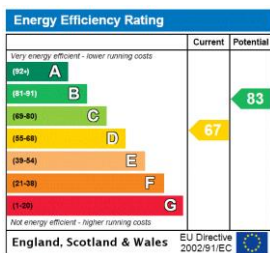
Ground Floor Building 2

(1) Excluding balconies and terraces

While every attempt has been made to ensure accuracy, all measurements are approximate, not to scale. This floor plan is for illustrative purposes only.

GIRAFFE360

This floorplan is for illustration purposes only and is not to scale. The position and size of doors, windows, appliances and other features are approximate.



Kingsbury | 020 8204 0000 | kingsbury@winkworth.co.uk



winkworth.co.uk

See things differently

Winkworth wishes to inform prospective buyers and tenants that these particulars are a guide and act as information only. All our details are given in good faith and believed to be correct at the time of printing but they don't form part of an offer or contract. No Winkworth employee has authority to make or give any representation or warranty in relation to this property. All fixtures and fittings, whether fitted or not are deemed removable by the vendor unless stated otherwise and room sizes are measured between internal wall surfaces, including furnishings.