



LONGLANDS COURT, LONDON, W11

£595,000 LEASEHOLD (87 YEARS REMAINING)

A BRIGHT TWO BEDROOM APARTMENT WITH SOUTH FACING BALCONY, IN THIS PURPOSE-BUILT BLOCK IN THE HEART OF NOTTING HILL.

**2 Bedrooms, 1 Reception Room, 1 Bathroom, Flat/Apartment,
Upper Floor with Lift, Balcony, 735 Approx Sq Ft, Service
Charge £2,207 p/a, Ground Rent £10 p/a**

Winkworth

Notting Hill Sales | 0207 727 3227 | nottinghill@winkworth.co.uk

winkworth.co.uk

for every step...



DESCRIPTION:

This bright and spacious apartment is extremely well configured, with a separate kitchen and south facing balcony off the reception room. The bedrooms are peacefully located to the rear of the building, either side of a separate w.c. and bathroom with separate walk-in shower. Situated on the top (5th) floor, with modern lift access, this apartment enjoys far reaching views from all windows.

LOCATION:

Longlands Court is extremely well located in the heart of Notting Hill, just off Westbourne Grove and Portobello Road, amongst the fashionable bars and boutiques and is a short walk from the transport amenities of Notting Hill Gate.

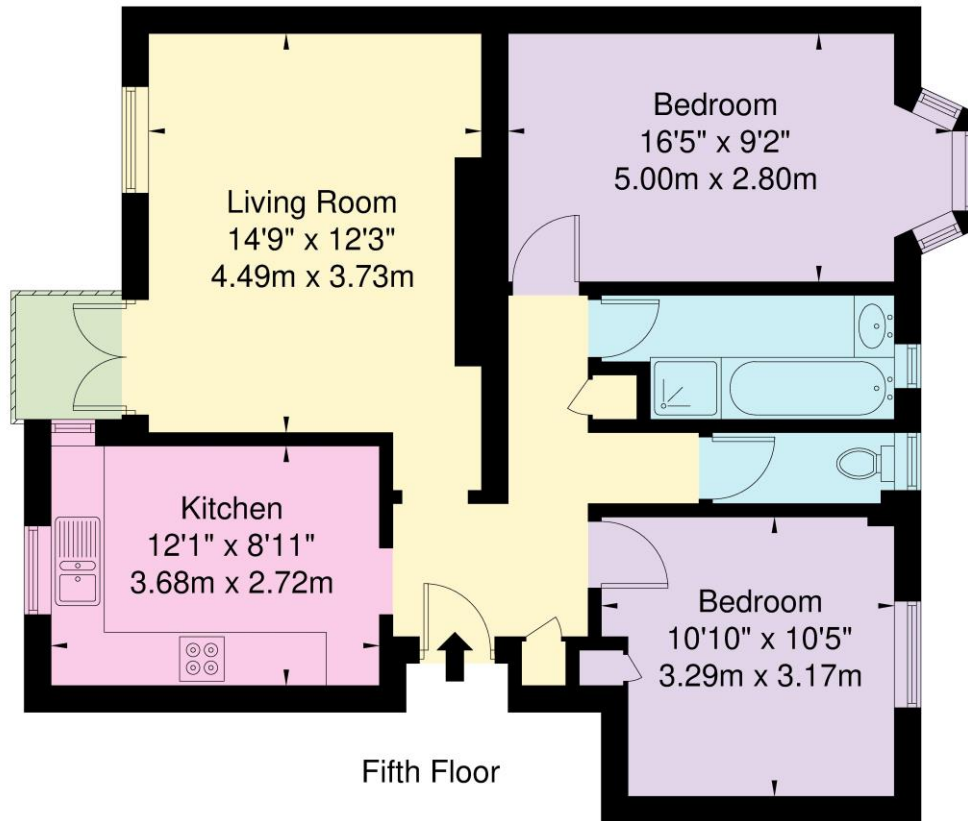
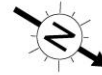
LOCAL AUTHORITY AND COUNCIL TAX BAND:

Royal Borough of Kensington and Chelsea (Band D)



Longlands Court, Portobello Road, W11 2QE

Approx. Gross Internal Area = 68.3 sq m / 735 sq ft



Fifth Floor

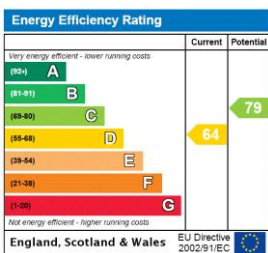
Ref

Copyright **BLEUPLAN**

The Floor plan is not to scale and measurements and areas shown are approximate and therefore should be used for illustrative purposes only. The plan has been prepared in accordance with the RICS code of Measuring Practice and whilst we have confidence in the information produced it must not be relied on. If there is any aspect of particular importance, you should carry out or commission your own inspection of the property.

Copyright @ BLEUPLAN

This floorplan is for illustration purposes only and is not to scale. The position and size of doors, windows, appliances and other features are approximate.



Notting Hill Sales | 0207 727 3227 | nottinghill@winkworth.co.uk



winkworth.co.uk

for every step...

winkworth wishes to inform prospective buyers and tenants that these particulars are a guide and act as information only. All our details are given in good faith and believed to be correct at the time of printing but they don't form part of an offer or contract. No Winkworth employee has authority to make or give any representation or warranty in relation to this property. All fixtures and fittings, whether fitted or not are deemed removable by the vendor unless stated otherwise and room sizes are measured between internal wall surfaces, including furnishings.