



HOSACK ROAD, SW17
£900,000 SHARE OF FREEHOLD

**A FABULOUS TWO/THREE BEDROOM, GARDEN
MAISONETTE WHICH IS LOCATED ON A SOUGHT-
AFTER RESIDENTIAL STREET.**

Tooting | 020 8767 5221 | tooting@winkworth.co.uk

Winkworth

for every step...

winkworth.co.uk



DESCRIPTION

A fabulous two/three bedroom-garden maisonette which is located on a sought-after residential street. Beautifully presented and measuring approximately 1063 square feet, the property provides plenty of natural light and space throughout and features a very private garden.

Towards the front is a stunning large reception room which could be used as a third bedroom depending on individual requirements. Master bedroom with gorgeous en-suite shower room, family bathroom and further double bedroom.

To the rear is an exceptional open plan living place with large side return and French doors opening to the landscaped rear garden. The kitchen area has a fabulous modern feel with a large island. This wonderful maisonette has been very well designed, the property offers a great space, perfect for entertaining as well as everyday living.

Hosack Road is located between the junctions of Marius Road and Boundaries Road. The amenities of Bellevue Road and Balham high road are within easy walking distance, as are the open spaces of Wandsworth Common. Transport can be found at Balham with a choice of Underground or Overground services just a ten-minute walk away. There are a good number of state and private schools nearby, subject to catchment each year.

Share of freehold

No Ground rent

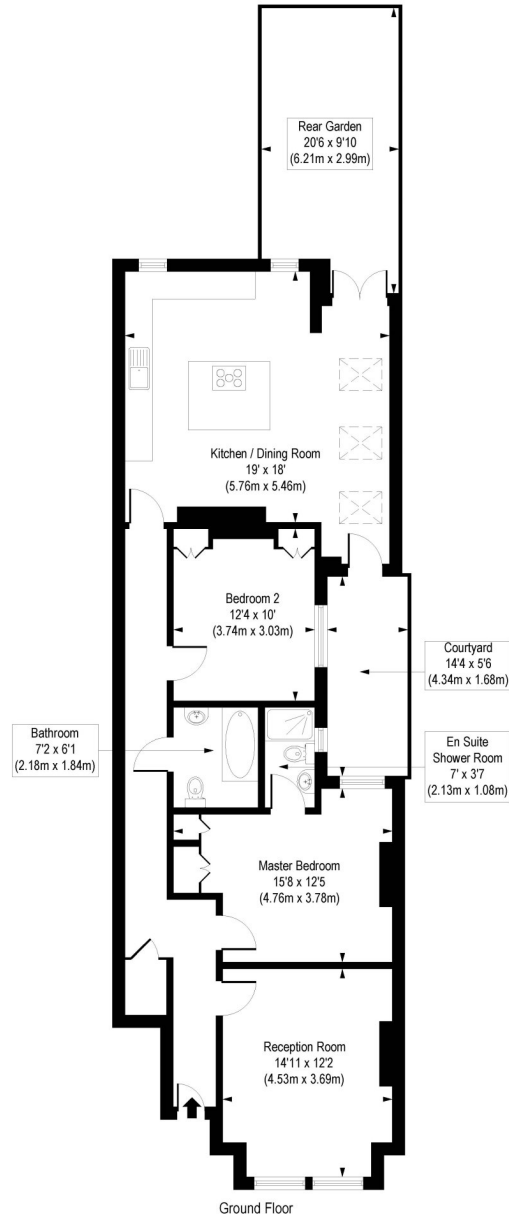
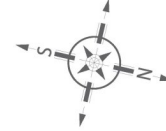
No service charge

Council tax band D



Hosack Road, SW17

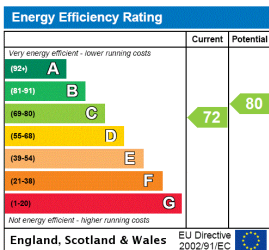
Approx. Gross Internal Floor Area 1063 sq. ft / 98.78 sq. m



Ground Floor

COMPLIANT WITH RICS CODE OF MEASURING PRACTICE. Floorplan is for illustrative purposes only and is not to scale. Every attempt has been made to ensure the accuracy of the floorplan shown, however all measurements, fixtures, fittings and data shown are an approximate interpretation for illustrative purposes only. Liability for errors, omissions or mis-statement through negligence or otherwise is hereby excluded.

This floorplan is for illustration purposes only and is not to scale. The position and size of doors, windows, appliances and other features are approximate.



Tooting | 020 8767 5221 | tooting@winkworth.co.uk

for every step...

winkworth.co.uk

Winkworth wishes to inform prospective buyers and tenants that these particulars are a guide and act as information only. All our details are given in good faith and believed to be correct at the time of printing but they don't form part of an offer or contract. No Winkworth employee has authority to make or give any representation or warranty in relation to this property. All fixtures and fittings, whether fitted or not are deemed removable by the vendor unless stated otherwise and room sizes are measured between internal wall surfaces, including furnishings.