



- CLOSE TO KINGSBURY STATION
- IN THE HEART OF KINGSBURY WITHIN WALKING DISTANCE TO SHOPPING AMENITIES
- PARKING AVAILABLE
- SCOPE TO EXTEND
- WITHIN CATCHMENT OF HIGHLY RATED SCHOOLS

MELBURY ROAD, MIDDLESEX, HA3
£585,000 FREEHOLD

THREE BEDROOM SEMI-DETACHED HOUSE FOR SALE

Kingsbury | 020 8204 0000 | kingsbury@winkworth.co.uk

Winkworth

for every step...

winkworth.co.uk



DESCRIPTION: Three Bedroom Semi Detached house in the heart of Kingsbury allowing access to local shopping amenities and walking distance to Kingsbury Tube Station. This spacious property is chain free and boasts good size rooms with scope to extend. The property is situated in a quiet residential road with close access to highly rated schools. A viewing is a must.



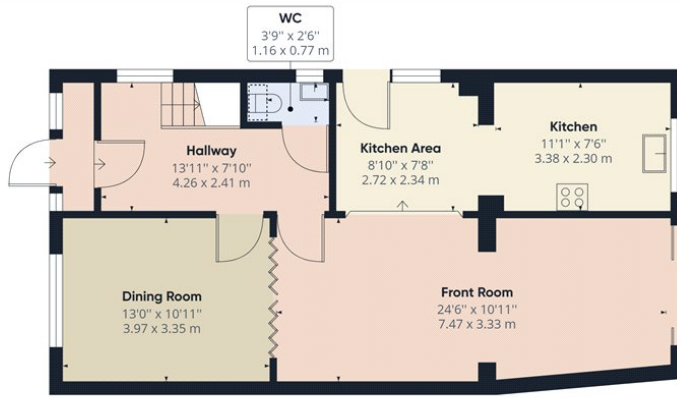
Winkworth

for every step...

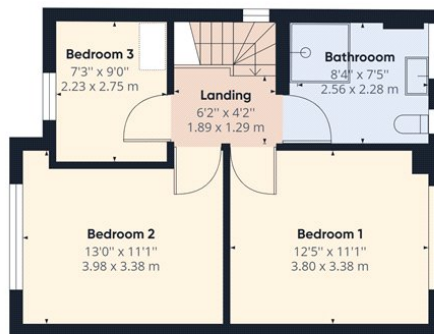


Winkworth

for every step...



Ground Floor Building 1



Floor 1 Building 1

Approximate total area⁽¹⁾

1125.26 ft²
104.54 m²

Reduced headroom

3.35 ft²
0.31 m²

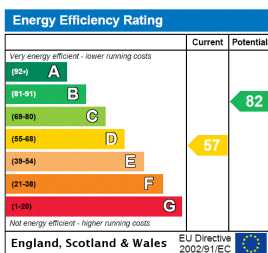
(1) Excluding balconies and terraces

☐ Reduced headroom (below 1.5m/4.92ft)

While every attempt has been made to ensure accuracy, all measurements are approximate, not to scale. This floor plan is for illustrative purposes only.

GIRAFFE 360

This floorplan is for illustration purposes only and is not to scale. The position and size of doors, windows, appliances and other features are approximate.



Kingsbury | 020 8204 0000 | kingsbury@winkworth.co.uk



for every step...

winkworth.co.uk

Winkworth wishes to inform prospective buyers and tenants that these particulars are a guide and act as information only. All our details are given in good faith and believed to be correct at the time of printing but they don't form part of an offer or contract. No Winkworth employee has authority to make or give any representation or warranty in relation to this property. All fixtures and fittings, whether fitted or not are deemed removable by the vendor unless stated otherwise and room sizes are measured between internal wall surfaces, including furnishings.