



PRIOR STREET, GREENWICH, LONDON, SE10
GUIDE PRICE £1,200,000-£1,250,000 FREEHOLD

A BEAUTIFULLY PRESENTED AND NEWLY DECORATED, THREE BEDROOM, GRADE II LISTED TERRACED HOUSE THAT COMPRISES OF FOUR FLOORS, AND MEASURES CIRCA 1348 SQUARE FOOT. SET ON THIS WONDERFULLY QUIET AND PRETTY ROAD IN WEST GREENWICH, JUST MOMENTS FROM THE TOWN CENTRE.

Greenwich | 02030533033 | greenwich@winkworth.co.uk

Winkworth

winkworth.co.uk

See things differently



DESCRIPTION:

GUIDE PRICE £1,200,000-£1,250,000. A beautifully presented and newly decorated, three bedroom, Grade II listed terraced house that comprises of four floors and measures circa 1348 square foot. Set on this wonderfully quiet and pretty road in West Greenwich, just moments from the town centre.

Built in the 1830's and in fine order throughout the property has a large and fully fitted kitchen on the lower level, along with a good sized bathroom, which includes a rolltop bath and shower cubicle. On this level there is also a utility area under the stairs. On the entrance level there are two reception rooms, interlinked with French doors. These rooms also benefit from hard wood flooring and two cast iron fireplaces. Upstairs there are three double bedrooms and lots of eaves storage. To the rear is an east facing, landscaped, garden.

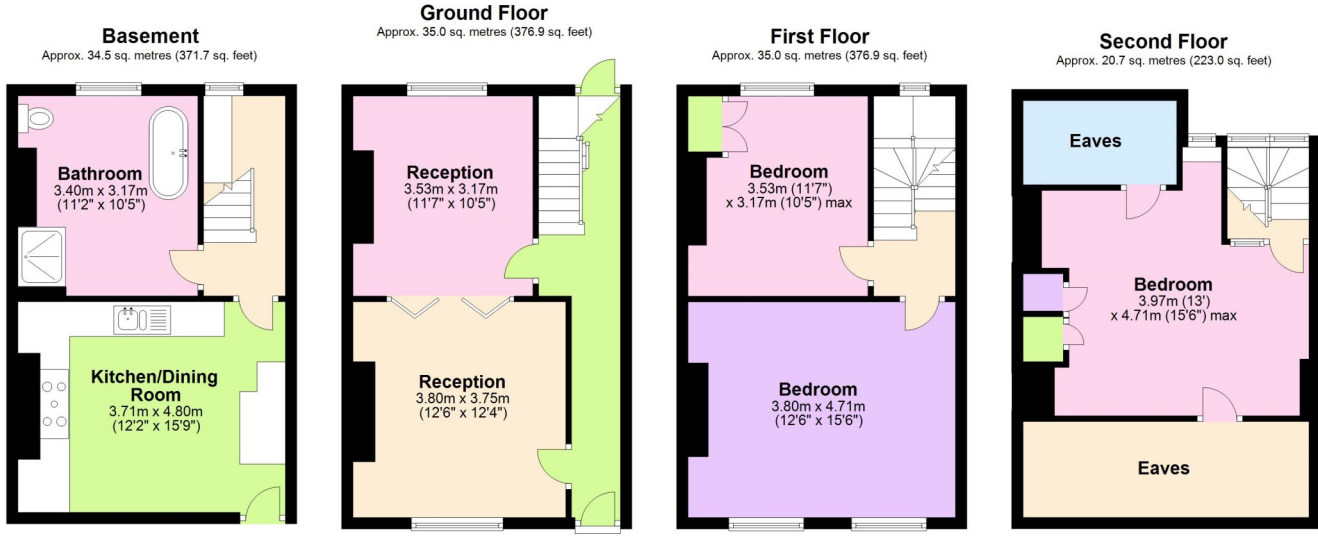
As mentioned, Prior Street is a stunning road that is quietly nestled in amongst the best roads in West Greenwich. The town centre is close by and offers a wide selection of shops and restaurants, along with Greenwich market, mainline rail, DLR and Riverboat service. The Royal Park with its Observatory is also within a 5-7 minute walk. The property comes chain free. Your earliest viewing is recommended.

AT A GLANCE

- superb family home
- Grade II listed
- three bedrooms
- four storey
- two reception rooms
- west facing garden
- newly decorated
- built 1837
- circa 1348 sq ft
- perfect location
- quiet road

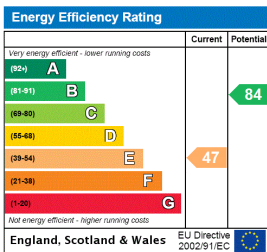






Total area: approx. 125.3 sq. metres (1348.5 sq. feet)

This floorplan is for illustration purposes only and is not to scale. The position and size of doors, windows, appliances and other features are approximate.



Greenwich | 02030533033 | greenwich@winkworth.co.uk



winkworth.co.uk

See things differently

Winkworth wishes to inform prospective buyers and tenants that these particulars are a guide and act as information only. All our details are given in good faith and believed to be correct at the time of printing but they don't form part of an offer or contract. No Winkworth employee has authority to make or give any representation or warranty in relation to this property. All fixtures and fittings, whether fitted or not are deemed removable by the vendor unless stated otherwise and room sizes are measured between internal wall surfaces, including furnishings.