



DASSETT ROAD, WEST NORWOOD, LONDON, SE27
£850,000 FREEHOLD

THREE DOUBLE BEDROOM MID TERRACED VICTORIAN HOUSE

West Norwood | 02086700035 | westnorwood@winkworth.co.uk

Winkworth

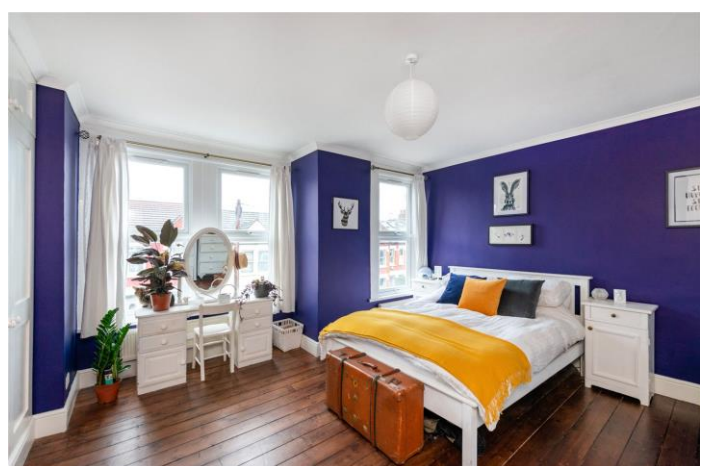
for every step...

winkworth.co.uk



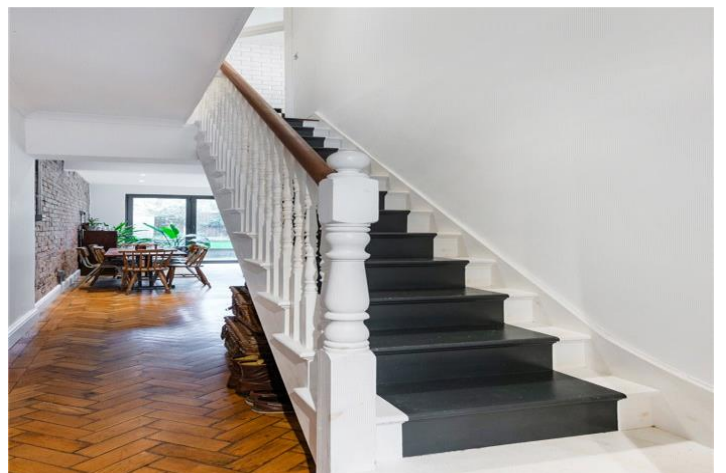
DESCRIPTION:

Presented to the market is this stunning, three double bedroom mid-terraced Victorian family home. The house has been subject to a complete refurbishment programme by the previous owners, including a fantastic side return extension. Further accommodation comprises; reception room, kitchen/diner with bi-folding doors to the garden, utility room, family bathroom and downstairs W.C. There is also a loft which with the necessary planning consents can be converted to provide another double bedroom and en-suite bathroom. The shops, bars and cafes along Knights Hill are all close to hand. Nearest transport is at West Norwood station with its frequent services to London Bridge and Victoria.



Winkworth

for every step...

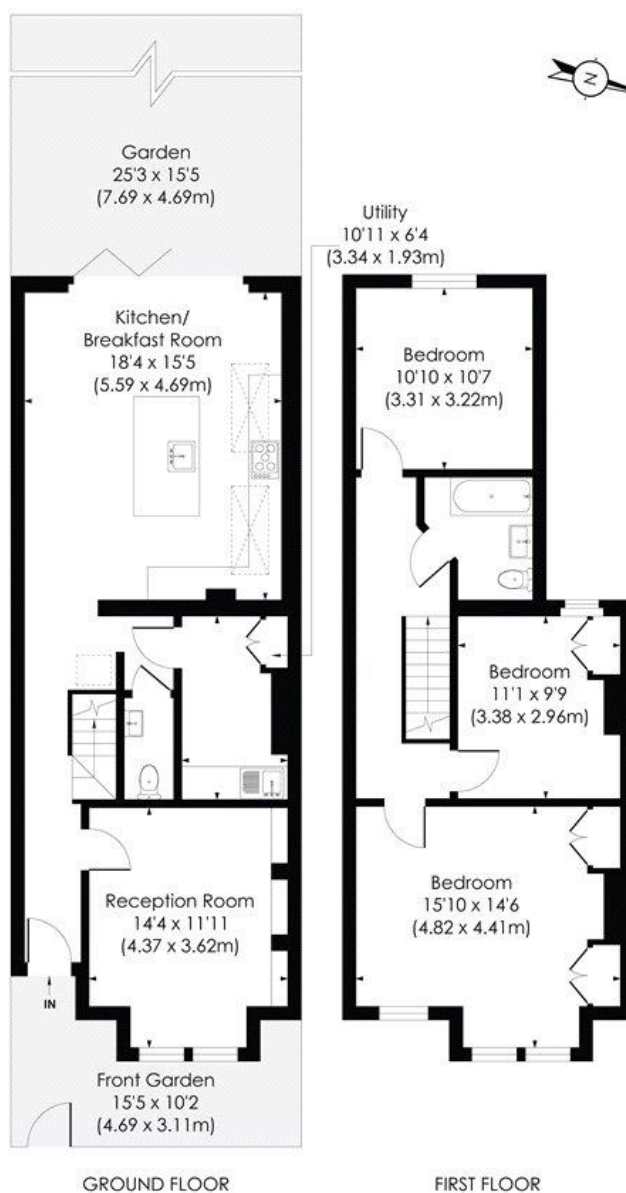


Winkworth

for every step...

DASSETT ROAD, SE27

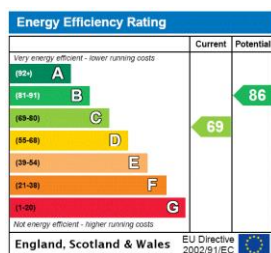
Approx. Gross Internal Floor Area
1266 Sq. ft/117.56 Sq. m



pixangle
PROPERTY MARKETING

© Pixangle Property Marketing Ltd. info @pixangle.com Tel: 0208 870 2118
This floor plan has been prepared for illustration purposes only, in accordance with the latest RICS code of measuring and is not to scale.
All measurements and areas are approximate and whilst every effort has been made to ensure the accuracy of the plan contained here, no responsibility is taken for any error, omission or misstatement.

This floorplan is for illustration purposes only and is not to scale. The position and size of doors, windows, appliances and other features are approximate.



West Norwood | 02086700035 | westnorwood@winkworth.co.uk

Winkworth

for every step...

winkworth.co.uk

Winkworth wishes to inform prospective buyers and tenants that these particulars are a guide and act as information only. All our details are given in good faith and believed to be correct at the time of printing but they don't form part of an offer or contract. No Winkworth employee has authority to make or give any representation or warranty in relation to this property. All fixtures and fittings, whether fitted or not are deemed removable by the vendor unless stated otherwise and room sizes are measured between internal wall surfaces, including furnishings.