



FIG TREE COTTAGE

4 HIGH STREET KINTBURY RG17 9TW

A pretty, semi-detached, period house, right in the heart of Kintbury and five minutes from the station.

The property has entrance hall, a generous sitting room with original fireplace, a bright and airy kitchen/ dining space with French doors to the south facing garden, which really is the heart of the house, a utility room and cloakroom complete the ground floor.

The first floor has main bedroom with ensuite shower room, two further double bedrooms and family bathroom.

There is a good sized south facing garden.

No onward chain.



Winkworth

AT A GLANCE

1380 Square feet / 128 square metres
Three double bedrooms
Two bath/ shower rooms
Sitting room
Open plan kitchen/ dining room
Utility
Cloakroom
South facing garden
No onward chain

UTILITIES

Mains water, drainage, electricity. Oil fired central heating.
West Berkshire Council Band E
EPC TBC

SITUATION

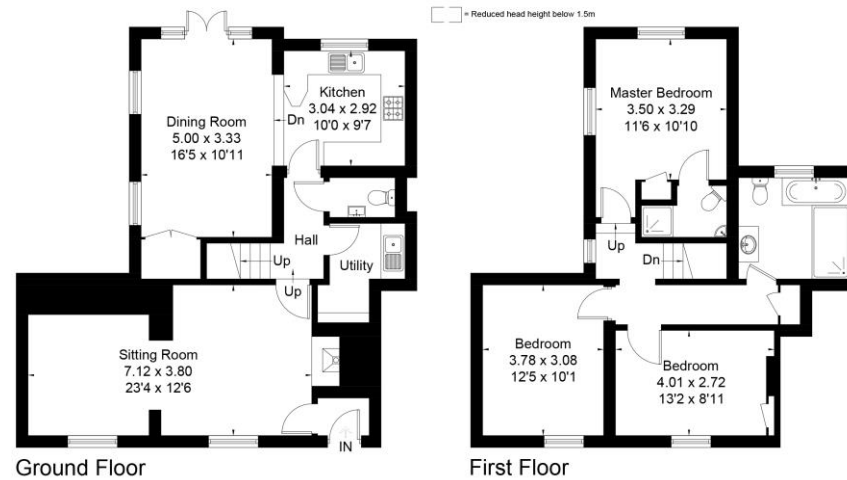
The property is situated in the heart of Kintbury, the village has a shop and post office, delicatessen, two pubs and a main line station to London (Paddington).

DIRECTIONS

For sat nav RG17 9TW.

What Three Words/// stung.teardrop.lurching

Approximate IPMS2 Floor Area = 125.4 sq m / 1350 sq ft
Limited Use Area = 2.8 sq m / 30 sq ft
Total = 128.2 sq m / 1380 sq ft



Newbury Office

43 Northbrook Street, Newbury, Berkshire RG14 1DT
01635 5525521 newbury@winkworth.co.uk

winkworth.co.uk/newbury

Winkworth

See things differently.